



**VACANT LAND FOR SALE**

## **VACANT LAND ON DORCHESTER ROAD**

8675 DORCHESTER ROAD | NORTH CHARLESTON, SC 29420



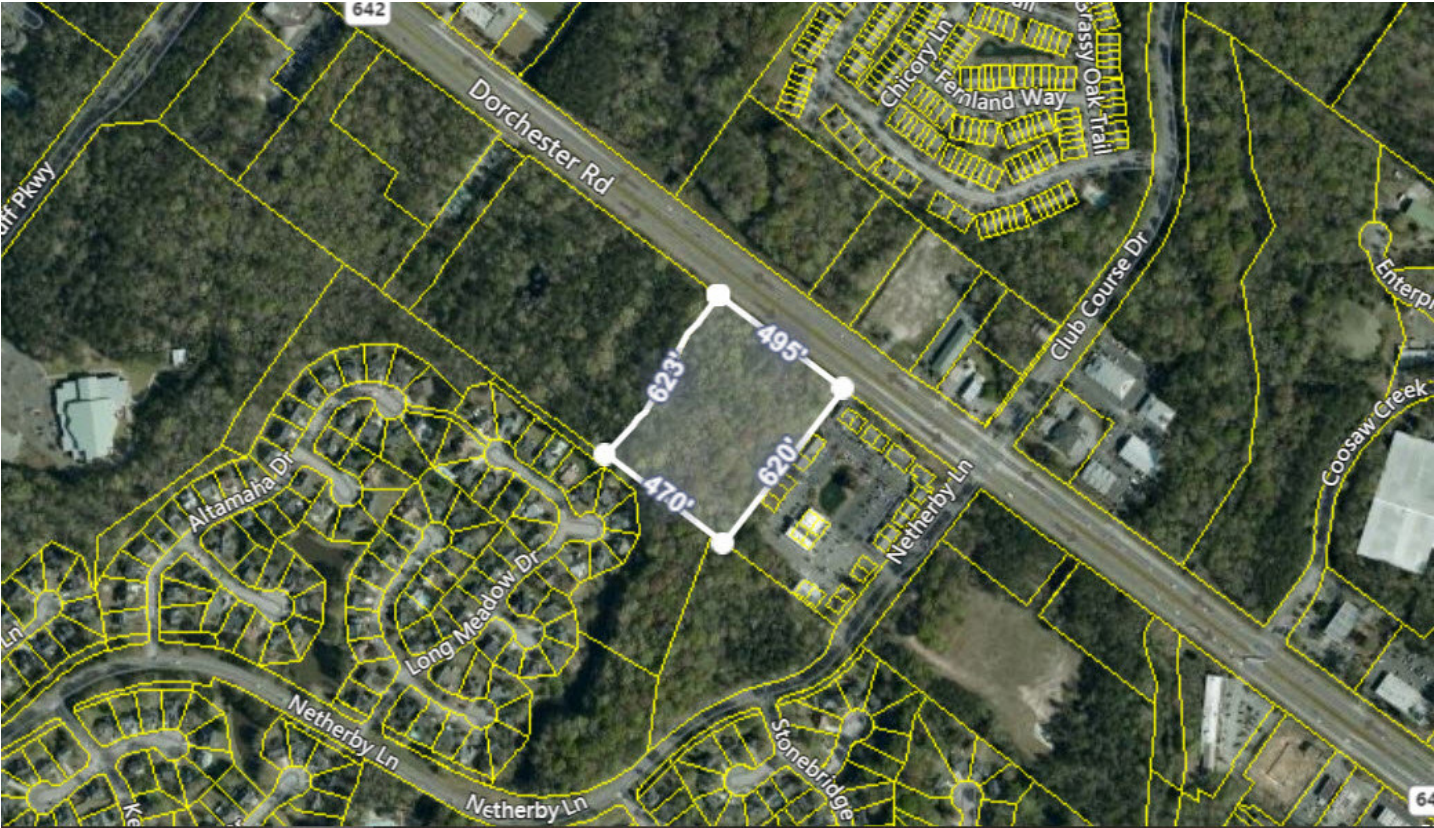
COLDWELL BANKER COMMERCIAL ATLANTIC  
3506 WEST MONTAGUE AVENUE, SUITE 200 NORTH CHARLESTON, SC 29418  
CBCATLANTIC.COM



# VACANT LAND ON DORCHESTER ROAD

8675 DORCHESTER ROAD | NORTH CHARLESTON, SC 29420

## PROPERTY OVERVIEW



### PROPERTY HIGHLIGHTS

**FOR SALE:** \$399,999  
**ACREAGE:** 6.77 AC  
**PROPERTY TYPE:** Vacant Lot  
**COUNTY:** Dorchester  
**TRAFFIC COUNT:** 39,700

### PROPERTY OVERVIEW

Great vacant land right on Dorchester Road, total of 6.77 acres. The property is zoned Office. About 1 acre is able to build. Great location, very busy road. Endless opportunity.

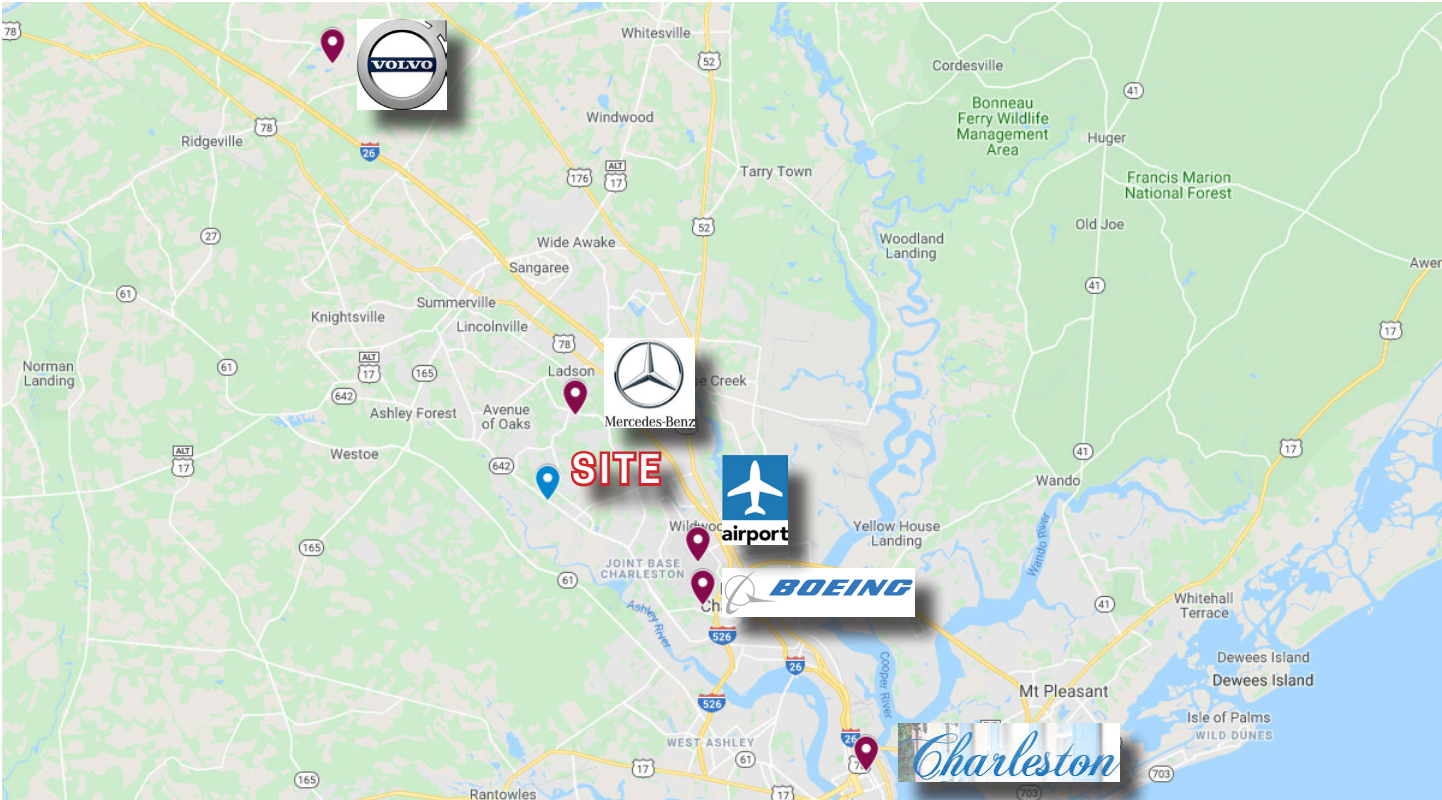
DEMOGRAPHICS	1 Mile	3 Mile	5 Mile
POPULATION	9,199	45,974	103,836
HOUSEHOLDS	3,247	16,902	39,279
AVG. HH INCOME	\$86,084	\$81,138	\$71,594

**JULIA DONOVAN**  
843-744-9877 (O) 843-870-5930 (C)  
jdonovan@cbsatlantic.com

# VACANT LAND ON DORCHESTER ROAD

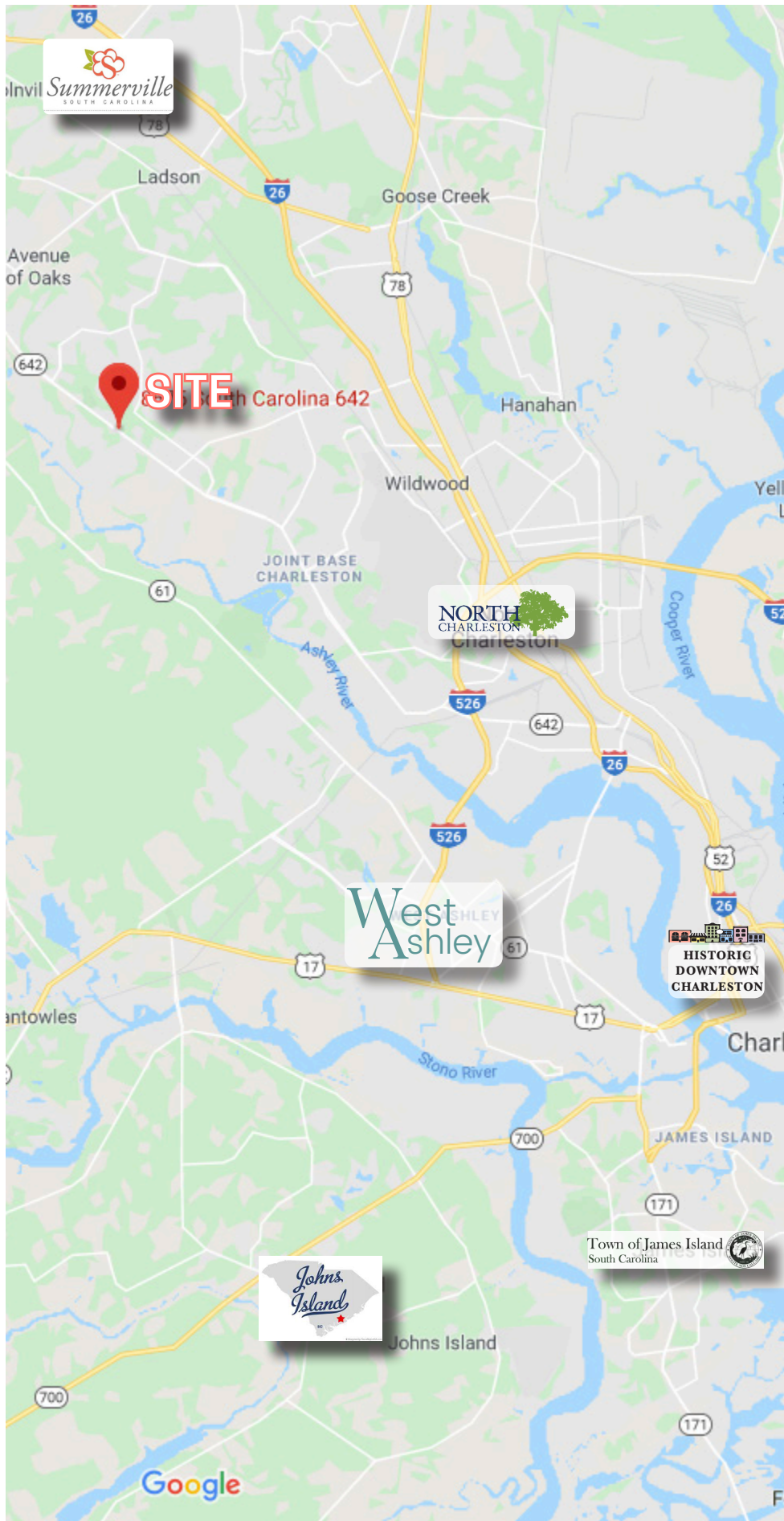
8675 DORCHESTER ROAD | NORTH CHARLESTON, SC 29420

## DISTANCE MAP



SITE .....	MILEAGE .....	MINUTES
AIRPORT .....	7 Miles .....	14 Minutes
MERCEDES .....	4.3 Miles .....	9 Minutes
VOLVO .....	25 Miles .....	35 Minutes
BOEING .....	7 Miles .....	14 Minutes
DOWNTOWN .....	17 Miles .....	25 Minutes





**JULIA DONOVAN**

*Agent*

843-744-9877 (O)

843-870-5930 (C)

[jdonovan@cbcatlantic.com](mailto:jdonovan@cbcatlantic.com)

The information contained herein should be considered confidential and remains the sole property of Coldwell Banker Commercial Atlantic at all times. Although every effort has been made to ensure accuracy, no liability will be accepted for any errors or omissions. Disclosure of any information contained herein is prohibited except with the express written permission of Coldwell Banker Commercial Atlantic.