

LEASE

\$18.00 SF/Year
Office Bldg
30,000 SF

Crossroads Professional Center

1150 Portion Road
Holtsville, NY 11742



Property Type:	Office Bldg
Property Use:	Rental or Investment
Year Built:	2001
Renovated Year:	2010
Level Number:	2
Max Continuous Area:	3,991
Min Divisible Area:	2,250



Crossroads Professional Center - 1150 Portion Road Holtsville NY, 11742 United States

Online Profile <http://www.cbcworldwide.com/properties/profile/VQGLC2-Holtsville-NY>

Property Description

Crossroads Professional Center - Located 1/2 mile north of the LIE at Exit 62, just off of Nicolls Road (Route 97). Close proximity to LI MacArthur Airport. Flexible lease terms. Utilities are direct meter. Will finish to suit. 2,340sf and 3,990 Sq. Ft units are move in ready and a great opportunity for an Attorney firm, CPA firm, etc.

Additional Features

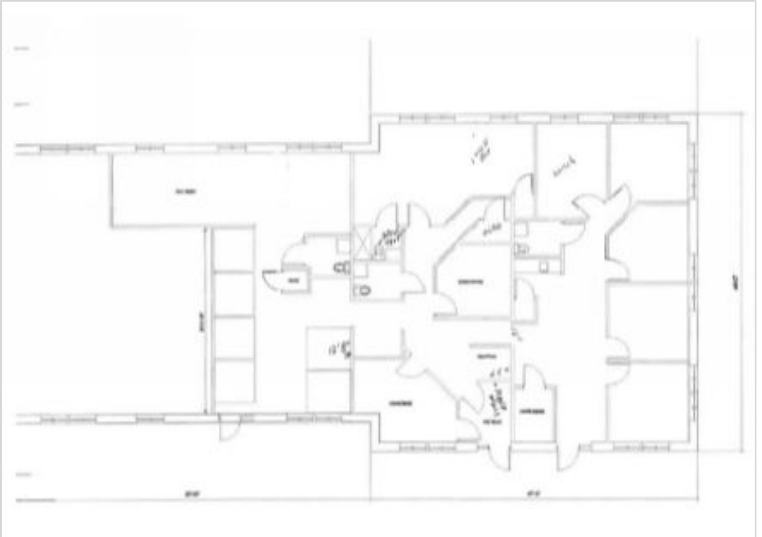
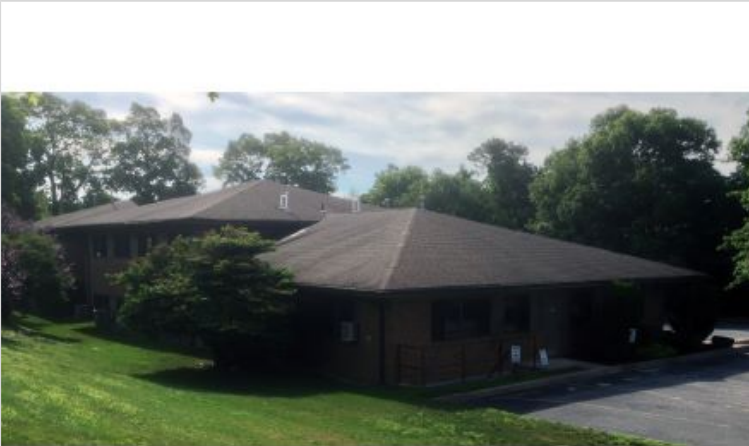
Tax Year:	2016
Listing ID:	VQGLC2
MLS ID:	1458
Style:	Office Bldg -General
Building Size:	30,000 SF

Leo Farrell

lfarrell@cbcli.com

Direct 631-761-9401

Mobile 631-375-1677



<http://www.cbcli.com/>
631-232-4400

Island Corporate Services
1601 Veterans Memorial Highway
Suite 420
Islandia, NY 11749

© 2019 Coldwell Banker Real Estate LLC, dba Coldwell Banker Commercial Affiliates. All Rights Reserved. Coldwell Banker Real Estate LLC, dba Coldwell Banker Commercial Affiliates fully supports the principles of the Equal Opportunity Act. Each Office is Independently Owned and Operated. Coldwell Banker Commercial and the Coldwell Banker Commercial Logo are registered service marks owned by Coldwell Banker Real Estate LLC, dba Coldwell Banker Commercial Affiliates. Each sales representative and broker is responsible for complying with any consumer disclosure laws or regulations.

The information provided is deemed reliable, but it is not guaranteed to be accurate or complete, and it should not be relied upon as such. This listing information should be independently verified before any person enters into a transaction based upon it.