

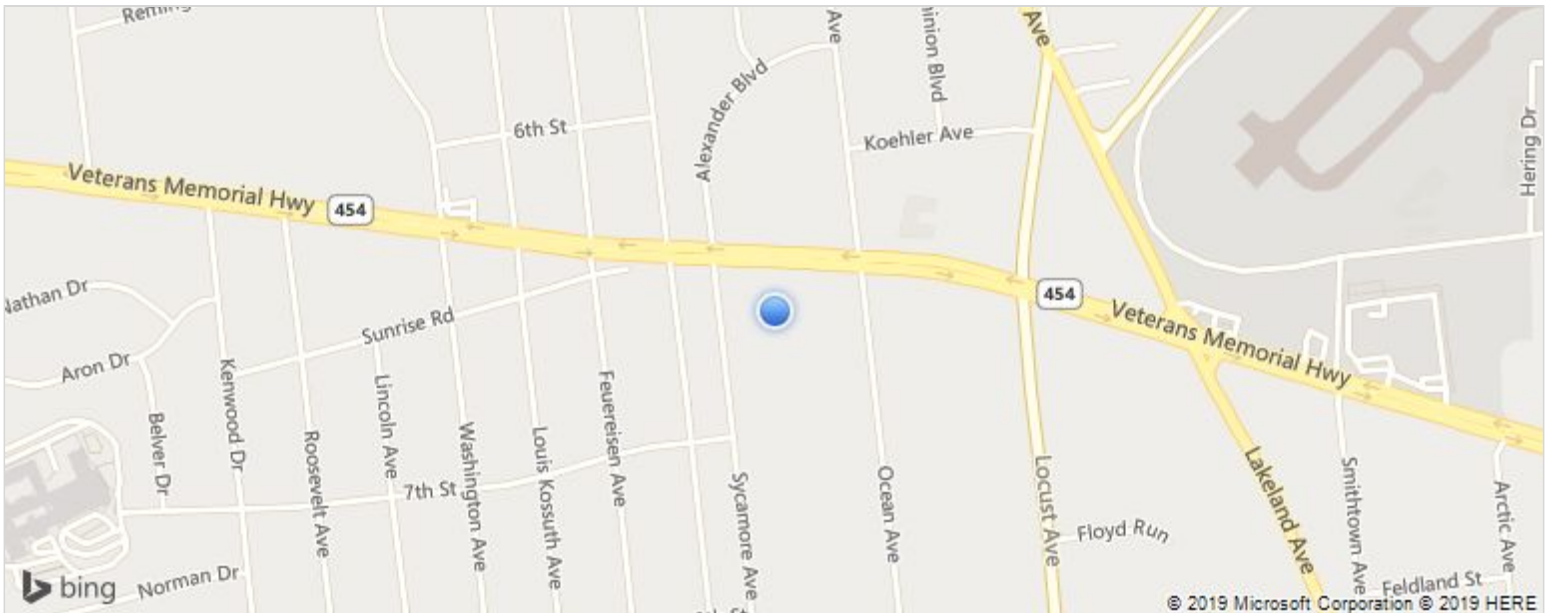
LEASE

\$30.00 SF/Year
Office Bldg
16,271 SF

3460 Veterans Memorial Highway
Bohemia, NY 11716



Property Type:	Office Bldg
Property Use:	Rental or Investment
Year Built:	2006
Renovated Year:	2010
Level Number:	1
Max Continuous Area:	5,000
Min Divisible Area:	2,000



3460 Veterans Memorial Highway Bohemia NY, 11716 United States

Property Description

Office / Medical Space Available with exposure and signage. Ideal for investment firms, attorneys, CPA's, etc. Excellent location with high visibility and signage on busy Veterans Highway. Minutes to the LIE and MacArthur Airport. Signalized intersection. Excellent parking. Join FedEx Office, Orlin & Cohen, etc.

Additional Features

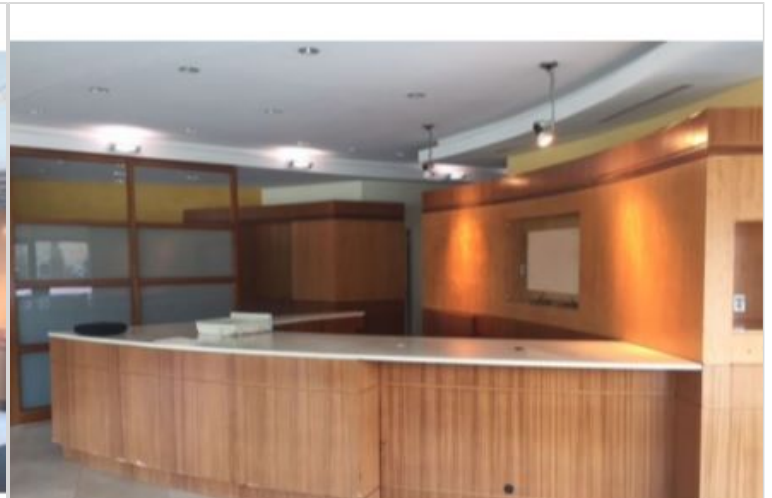
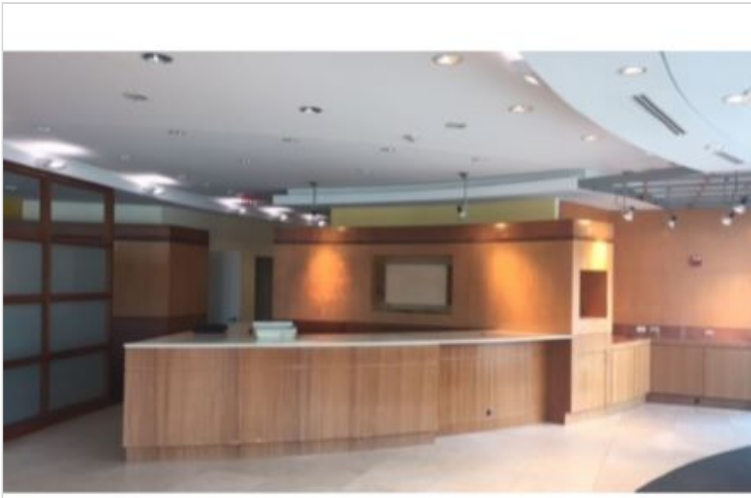
Zoning:	Commercial
Tax Year:	2016
Listing ID:	STWEJN
MLS ID:	8976
Style:	Office Bldg -General
Building Size:	16,271 SF
Zoning:	Commercial

Leo Farrell

lfarrell@cbcli.com

Direct 631-761-9401

Mobile 631-375-1677



<http://www.cbcli.com/>
631-232-4400

Island Corporate Services
1601 Veterans Memorial Highway
Suite 420
Islandia, NY 11749

© 2019 Coldwell Banker Real Estate LLC, dba Coldwell Banker Commercial Affiliates. All Rights Reserved. Coldwell Banker Real Estate LLC, dba Coldwell Banker Commercial Affiliates fully supports the principles of the Equal Opportunity Act. Each Office is Independently Owned and Operated. Coldwell Banker Commercial and the Coldwell Banker Commercial Logo are registered service marks owned by Coldwell Banker Real Estate LLC, dba Coldwell Banker Commercial Affiliates. Each sales representative and broker is responsible for complying with any consumer disclosure laws or regulations.

The information provided is deemed reliable, but it is not guaranteed to be accurate or complete, and it should not be relied upon as such. This listing information should be independently verified before any person enters into a transaction based upon it.