

LEASE

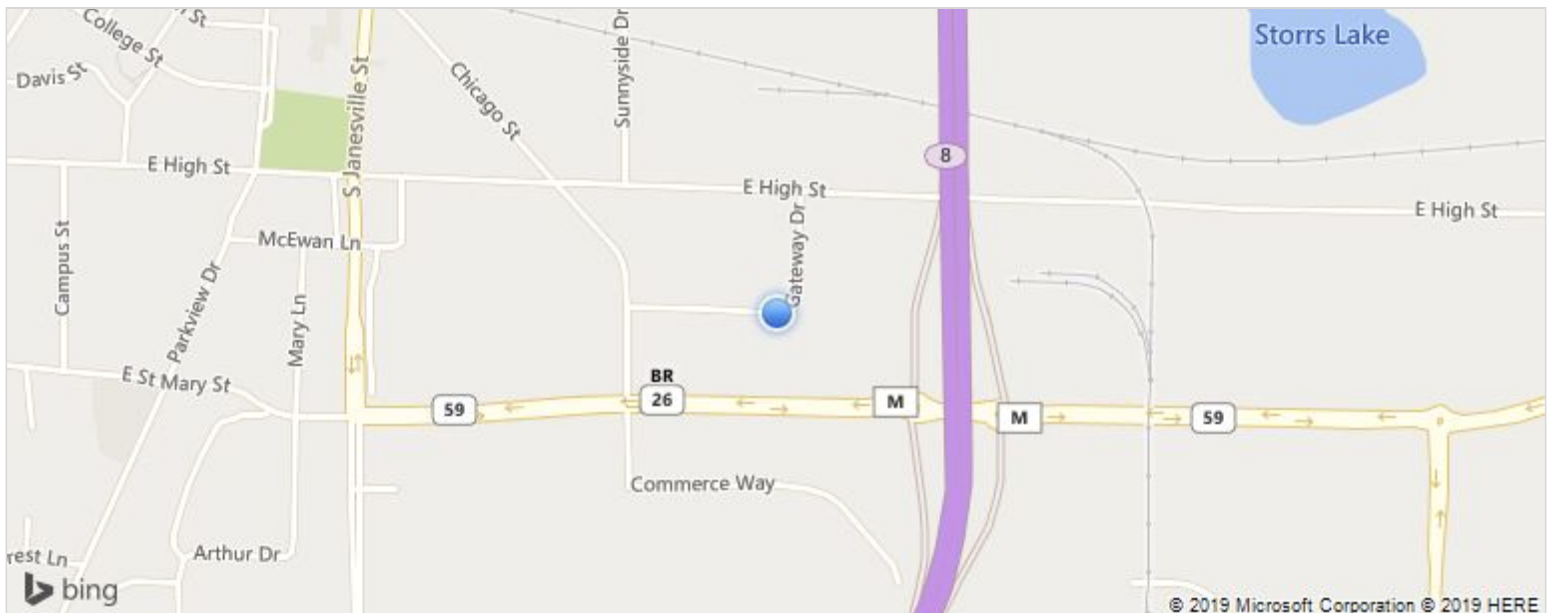
\$4.50 SF/Year
Industrial
60,000 SF

Crossroads Flex Building

Gateway Dr
Milton, WI 53563



| | |
|-----------------------------|-----------------------------|
| Property Type: | Industrial |
| Available Space: | 60,000 |
| Max Continuous Area: | 60,000 |
| Min Divisible Area: | 15,000 |
| Listing ID: | N6Q6PM |
| Style: | Industrial Bldg -Flex Space |
| Building Size: | 60,000 SF |



Crossroads Flex Building - Gateway Dr Milton WI, 53563 United States

Online Profile <http://www.cbcworldwide.com/properties/profile/N6Q6PM-Milton-WI>

Property Description

Proposed industrial building for lease in Milton, Wisconsin. Spaces available as small as 15,000 SF. 25' x 50' bay sizes. Two (2) docks per 15,000 SF for a building total of eight (8) docks. 24' at the eave. Easy access to State Highways 26 and 59.

Additional Features

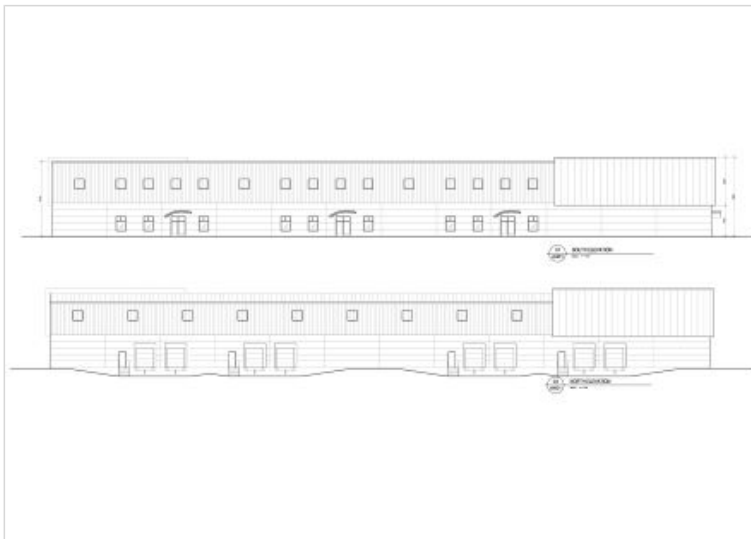
| | |
|------------------------------|-------------------------|
| Docks: | 8 |
| Industrial Clearance: | 24 |
| Lease Requirements: | Rent Excludes-Utilities |

William Mears

bill@mcguiremears.com

Direct 608-314-8251

Mobile 608-359-3031



<http://www.mcguiremears.com/>
608-752-6325

McGuire Mears & Associates
400 Midland Court
Suite 101
Janesville, WI 53546

© 2019 Coldwell Banker Real Estate LLC, dba Coldwell Banker Commercial Affiliates. All Rights Reserved. Coldwell Banker Real Estate LLC, dba Coldwell Banker Commercial Affiliates fully supports the principles of the Equal Opportunity Act. Each Office is Independently Owned and Operated. Coldwell Banker Commercial and the Coldwell Banker Commercial Logo are registered service marks owned by Coldwell Banker Real Estate LLC, dba Coldwell Banker Commercial Affiliates. Each sales representative and broker is responsible for complying with any consumer disclosure laws or regulations.

The information provided is deemed reliable, but it is not guaranteed to be accurate or complete, and it should not be relied upon as such. This listing information should be independently verified before any person enters into a transaction based upon it.