

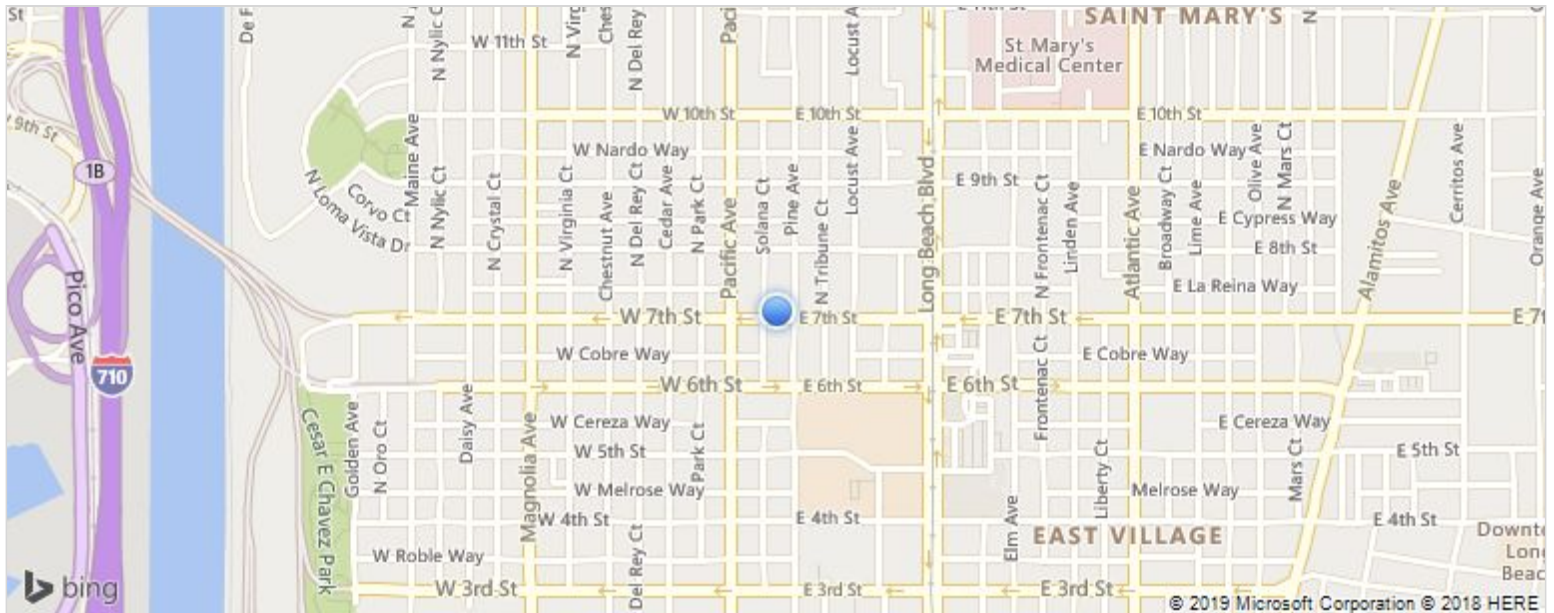
SALE

\$1,939,000
Retail
6,650 SF

701 Pine Ave.
Long Beach, CA 90813



Property Type:	Retail
Max Continuous Area:	6,650
Min Divisible Area:	6,650
Listing ID:	EGZZ8G
Style:	Retail - Street Retail
Building Size:	6,650 SF
Lot Size:	7528 SF



701 Pine Ave. Long Beach CA, 90813 United States

Online Profile <http://www.cbcworldwide.com/properties/profile/EGZZ8G-LongBeach-CA>

Property Description

The property is located on the Northwest corner of 7th and Pine Avenue. This two story building with good street parking and a private open parking lot in the rear is well positioned for many uses. Originally built as a women's high-end clothing store, the building still has an expansive ground floor area, Kitchen ADA accessible restrooms, basement for storage, and height of two stores on the main ground floor area. The owner's business, a printing shop and mail box store will not go with the property and the building will be vacant at close of escrow.

Additional Features

Available Date:

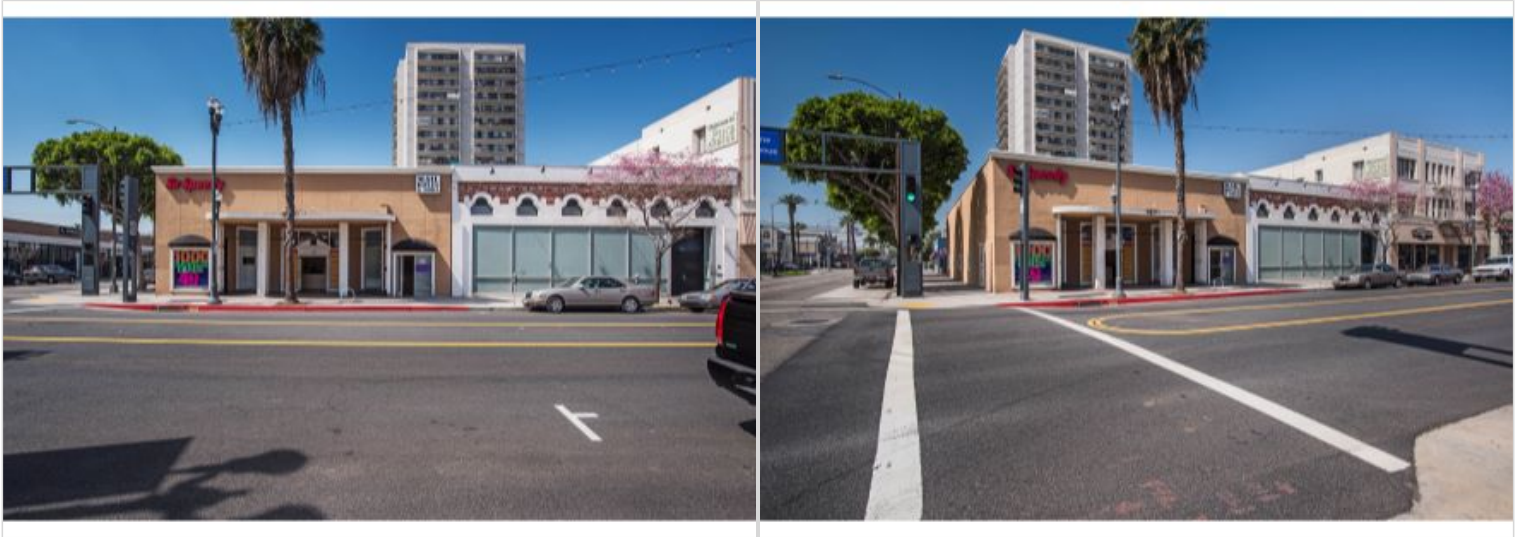
Mar 3rd, 2017

Becky Blair

bblair@cbcblair.com

Direct 562-495-6070

Mobile 562-301-4515



<http://www.blaircommercial.com/>
562-495-6070

BLAIR WESTMAC
333 West Broadway
Suite 312
Long Beach, CA 90802

© 2019 Coldwell Banker Real Estate LLC, dba Coldwell Banker Commercial Affiliates. All Rights Reserved. Coldwell Banker Real Estate LLC, dba Coldwell Banker Commercial Affiliates fully supports the principles of the Equal Opportunity Act. Each Office is Independently Owned and Operated. Coldwell Banker Commercial and the Coldwell Banker Commercial Logo are registered service marks owned by Coldwell Banker Real Estate LLC, dba Coldwell Banker Commercial Affiliates. Each sales representative and broker is responsible for complying with any consumer disclosure laws or regulations.

The information provided is deemed reliable, but it is not guaranteed to be accurate or complete, and it should not be relied upon as such. This listing information should be independently verified before any person enters into a transaction based upon it.