

MULTI-FAMILY LAND

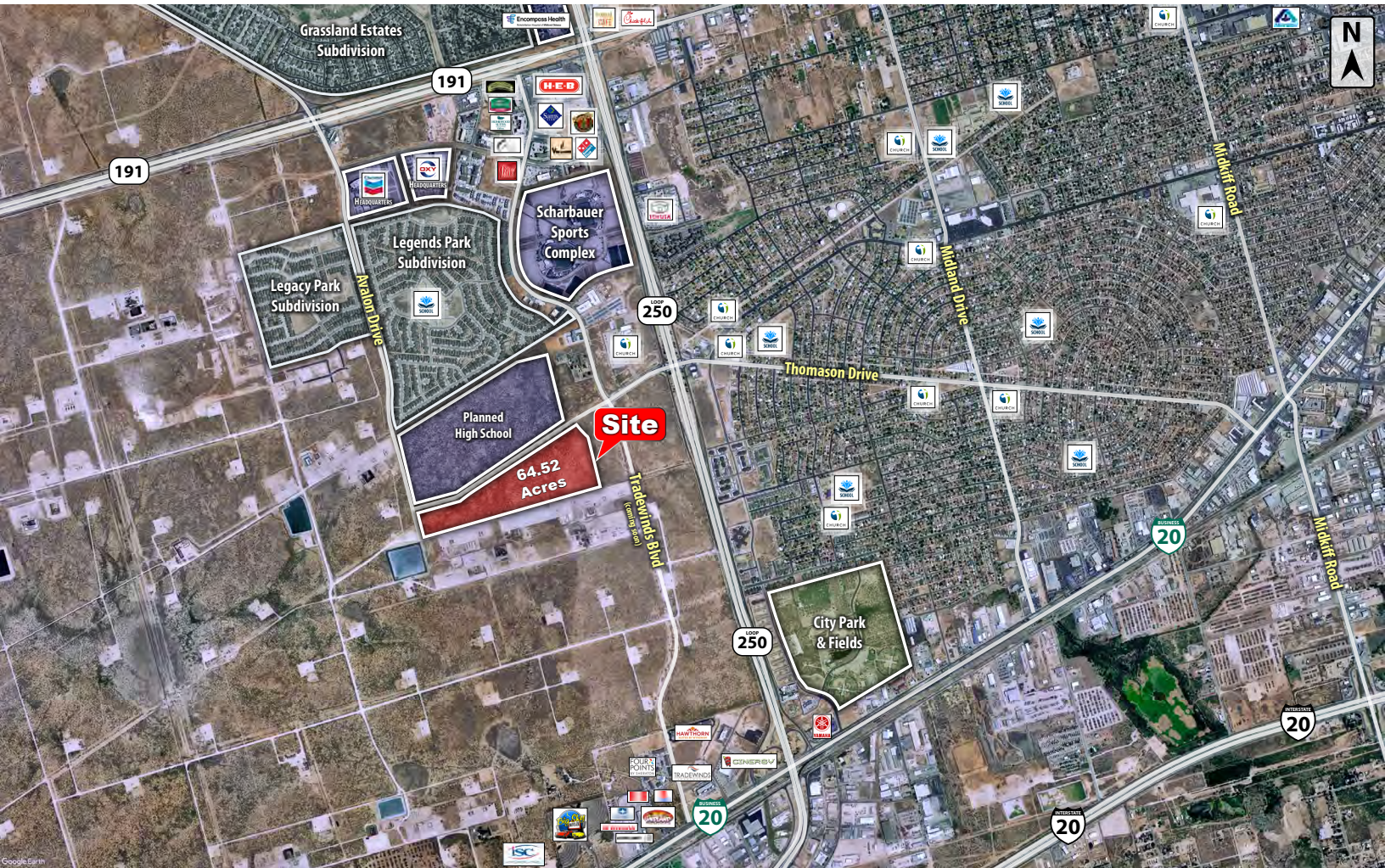
FOR SALE



**COLDWELL
BANKER
COMMERCIAL**

CAPITAL ADVISORS

**WEST OF TRADEWINDS BLVD & LEISURE AVE
MIDLAND, TX 79706**



NEARBY TENANTS 1.5 MILES



PROPERTY INFORMATION

LOCATION:

This property sits on the west side of the planned Tradewinds Corridor.

DESCRIPTION:

A large multifamily development tract in growing west Midland. Conveniently located in the Tradewinds Corridor. This tract sits just south of a newly planned subdivision which will also supply another school in the immediate area.

ZONING:

To be zoned multi-family

UTILITIES:

City utilities available

FLOODZONE:

Property is not in the floodplain

SIZE:

64.52 Acres (can be subdivided)

SALES PRICE:

\$5.00 per Square Foot

**CBCCapitalAdvisors.com
CBCWorldwide.com**

**Coldwell Banker Commercial
CAPITAL ADVISORS**

4924 S. Loop 289
Lubbock, TX 79414
806.793.0888

MIDLAND, TX
CLOSE AERIAL


DEMOGRAPHICS

POPULATION	1 MILE	3 MILES	5 MILES
TOTAL POPULATION	1,581	25,612	73,944
MEDIAN AGE	34.0	30.4	32.6
MEDIAN AGE (MALE)	33.1	30.1	31.5
MEDIAN AGE (FEMALE)	34.9	31.4	34.3
HOUSEHOLDS & INCOME	1 MILE	3 MILES	5 MILES
TOTAL HOUSEHOLDS	541	8,847	27,444
# OF PERSONS PER HH	2.9	2.9	2.7
AVERAGE HH INCOME	\$68,749	\$59,800	\$74,033
AVERAGE HOUSE VALUE	\$172,111	\$111,278	\$124,131

For Additional
Information Contact:



Beau Tucker, CCIM
The Land Man

806.784.3298 direct
806.470.3944 cell

BTucker@CBCWorldwide.com