



For **HANAHAN SHOPPING CENTER**

Lease 1750 Remount Road Unit F
Hanahan, SC 29410

Brent Case, CCIM | President / Broker in Charge | bcase@cbcatlantic.com



COLDWELL BANKER
COMMERCIAL
ATLANTIC

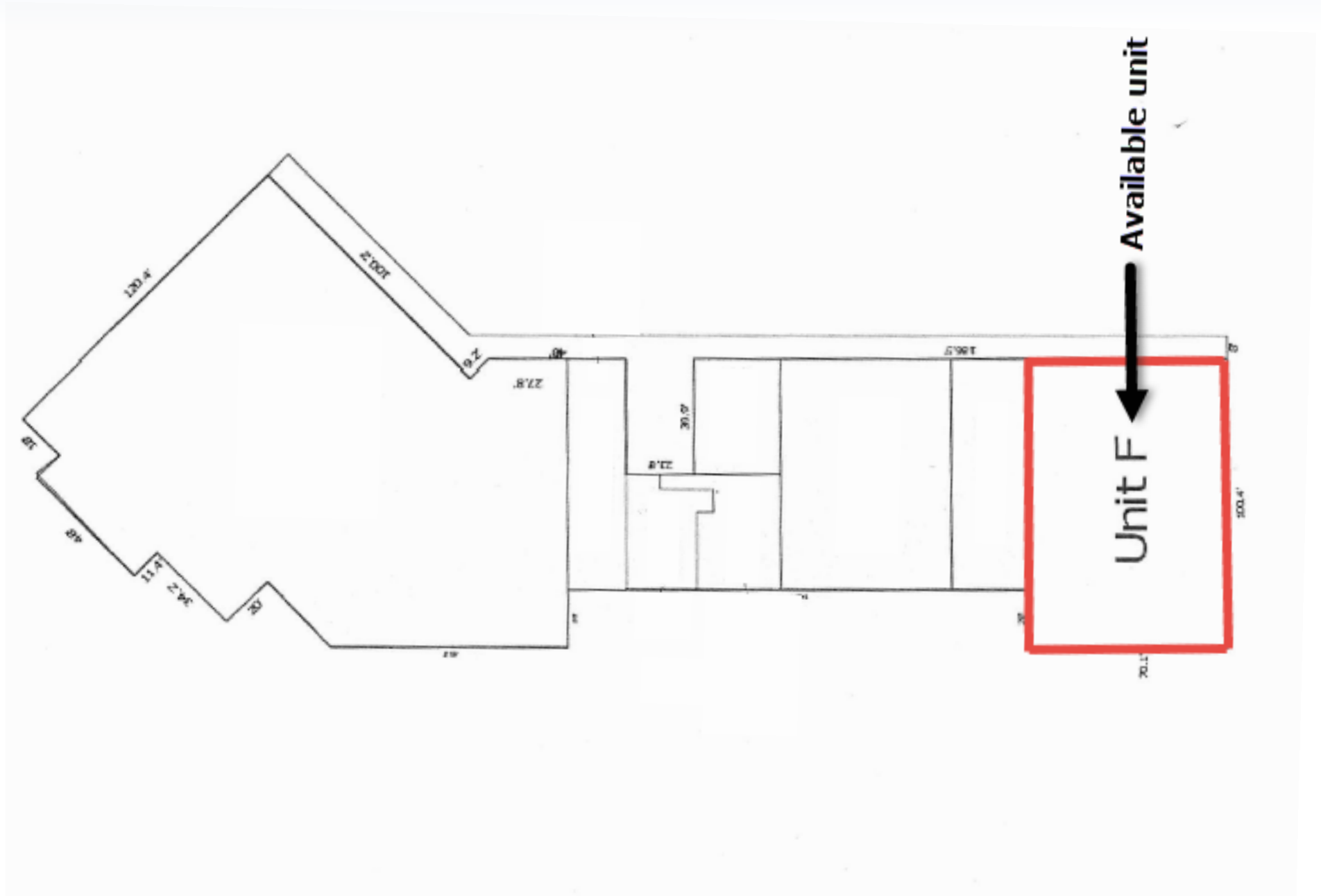


OFFERING SUMMARY

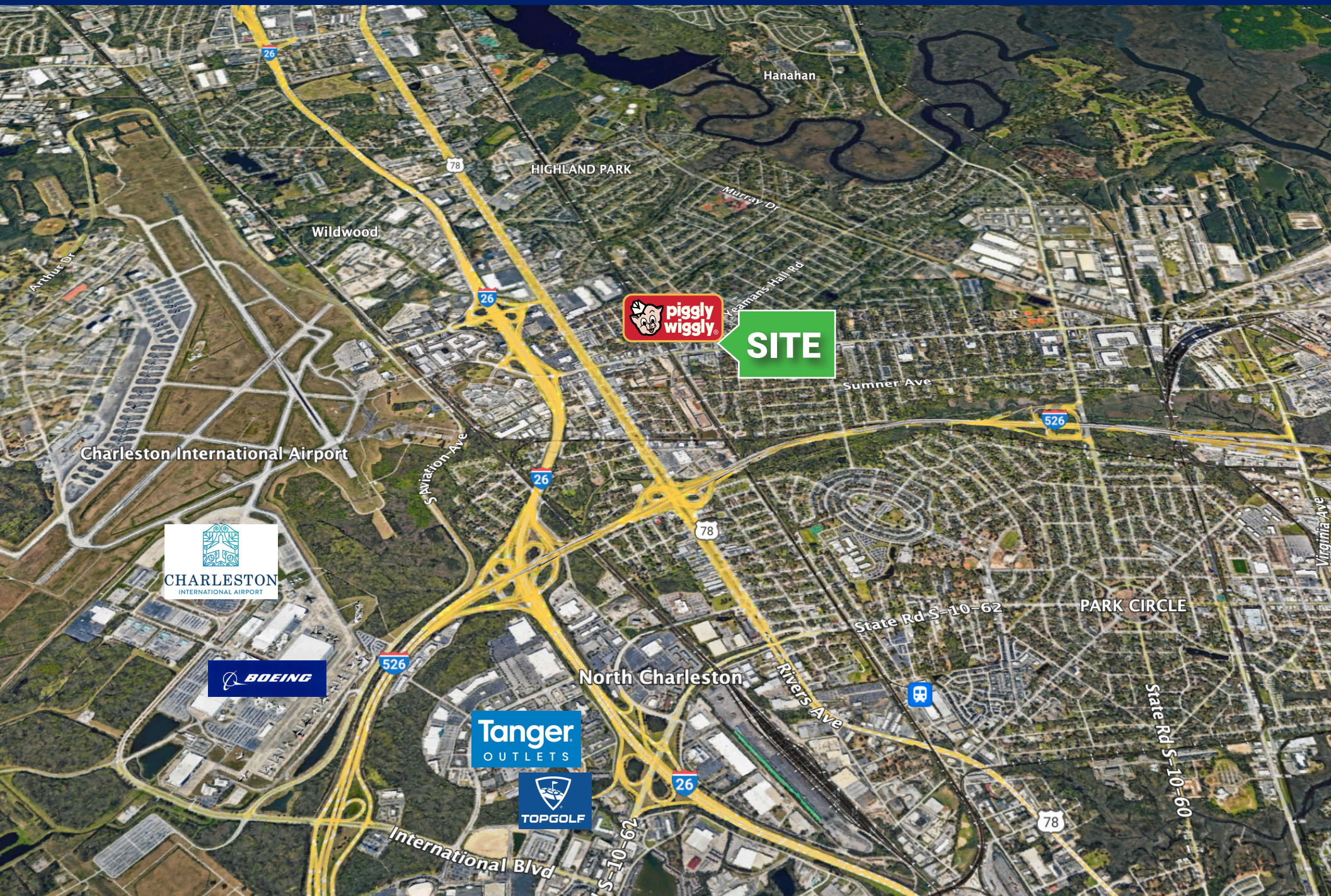
PROPERTY OVERVIEW

Lease Rate:	\$12 PSF
Total Available:	2,500 SF - 7,000 SF
Lease Type:	NNN
CAM:	\$3.00
County:	Berkeley County
Zoning:	Hanahan - TC

Suite F contains approximately 7,000 sqft, which is roughly a 20% footprint within the Hanahan Shopping Center. This unit was previously a gym, but can be easily converted into retail, or subdivided to as small as 2,500 sqft. The open layout of the vanilla shell interior is ideal for a quick and easy upfit tailored to the specs of the tenant. The interior features a retail counter, a back office, store closet, and 2 large restrooms. There is also a large rear door, which backs up to the rear driveway, making it easy for pickups/deliveries.



AREA RETAILERS

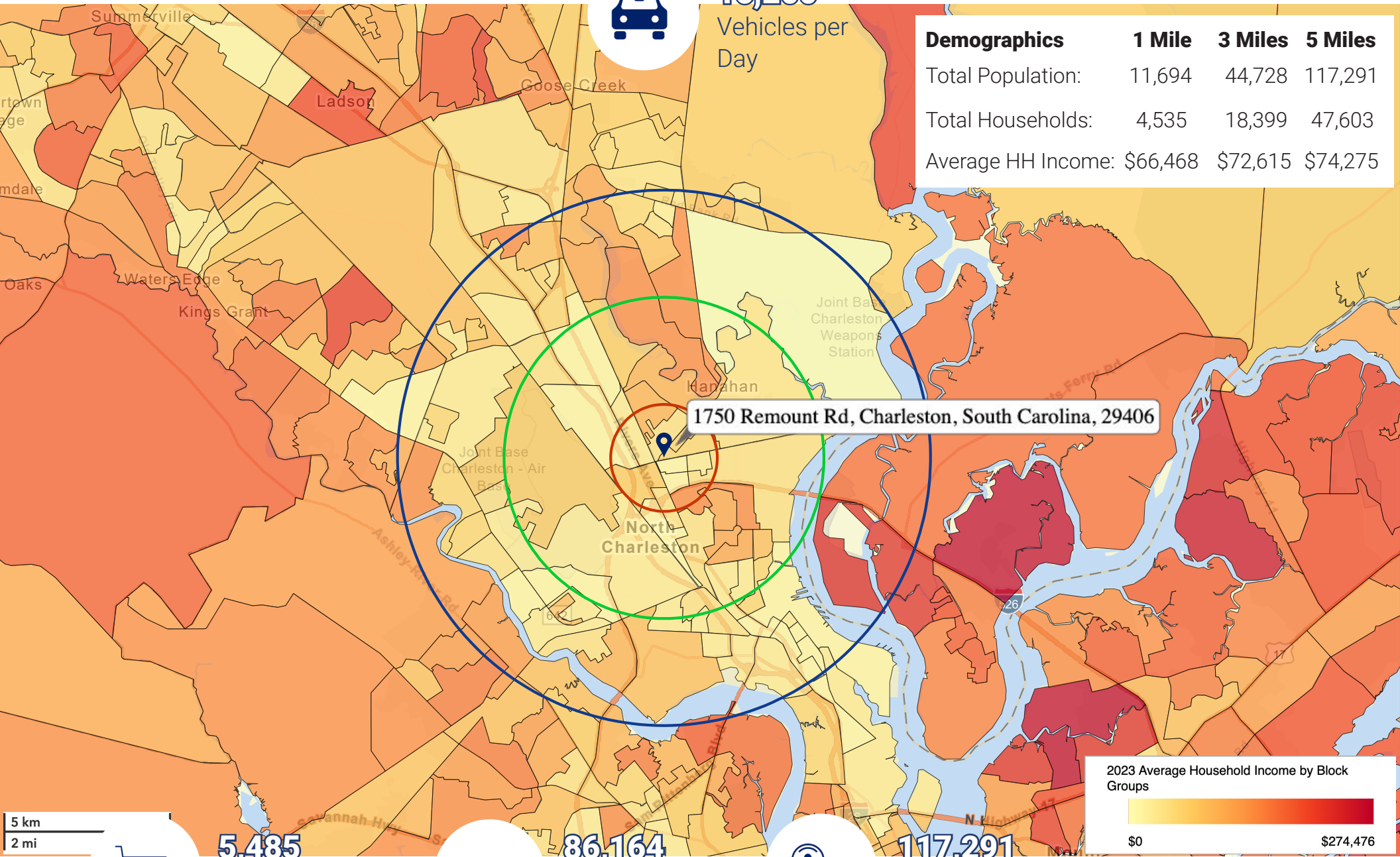


DEMOGRAPHICS

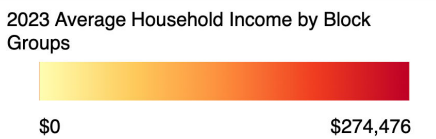


16,200
Vehicles per
Day

Demographics	1 Mile	3 Miles	5 Miles
Total Population:	11,694	44,728	117,291
Total Households:	4,535	18,399	47,603
Average HH Income:	\$66,468	\$72,615	\$74,275



1750 Remount Rd, Charleston, South Carolina, 29406



All demographics based on Esri forecasts for 2023

SCDOT AADT 2022



5,485
Businesses
within 5 Miles



86,164
Employees
within 5 Miles



117,291
Population
within 5 Miles



COLDWELL BANKER
COMMERCIAL
ATLANTIC

1750 Remount Road Unit F | Hanahan, SC 29410

HANAHAN SHOPPING CENTER



Brent Case, CCIM

(C) 843.270.4192

bcase@cbcatlantic.com



**COLDWELL BANKER
COMMERCIAL
ATLANTIC**

3506 W Montague Ave Suite 200

North Charleston, SC 29418

843.744.9877

cbcatlantic.com | cbcretailatlantic.com

This information has been obtained from sources believed reliable but has not been verified for accuracy or completeness. Coldwell Banker Commercial Atlantic makes no guarantee, representation or warranty and accepts no responsibility or liability as to the accuracy, completeness, or reliability of the information contained herein. You should conduct a careful, independent investigation of the property and verify all information. Any reliance on this information is solely at your own risk.

The information contained herein should be considered confidential and remains the sole property of Coldwell Banker Commercial Atlantic at all times. Although every effort has been made to ensure accuracy, no liability will be accepted for any errors or omissions. Disclosure of any information contained herein is prohibited except with the express written permission of Coldwell Banker Commercial Atlantic.