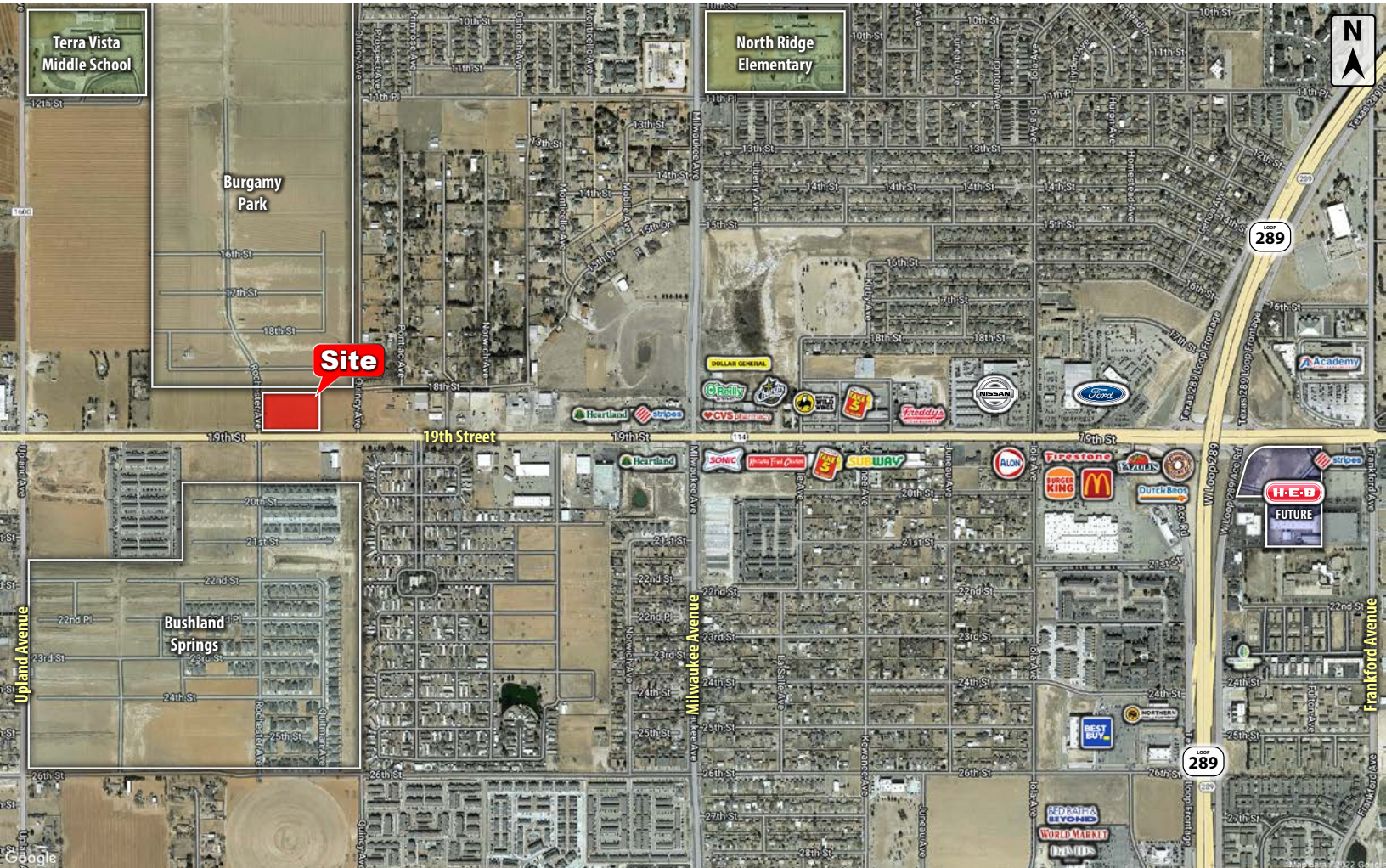




6920 19TH STREET

Lubbock, TX 79407

LAND



QUICK FACTS



PURCHASE PRICE
\$8 PER SQ. FT.



TOTAL ACREAGE
3.11 AC



ZONING
COMMERCIAL

CBCWORLDWIDE.COM

BEAU TUCKER, CCIM
806.470.3944
BTUCKER@CBCWORLDWIDE.COM
CBCLANDMAN.COM



**COLDWELL BANKER
COMMERCIAL**
CAPITAL ADVISORS



TRADE AREA & INFORMATION



LOCATION

Located at the northeast corner of 19th Street and Rochester Avenue.

DESCRIPTION

A commercial development tract in the Burgamy Park subdivision, one of Lubbock's latest residential subdivisions. This tract is located in the heart of growing west Lubbock in between the developing subdivisions of Bushland Springs and Burgamy Park. Located along the strong retail corridor of west 19th Street, this corridor is soon to receive Lubbock's second HEB at 19th and W Loop 289. All utilities have been brought to site and commercial development is ready.

OPTIONS

3.11 Acres at \$8.00 per Sq. Ft.



**COLDWELL BANKER
COMMERCIAL**
CAPITAL ADVISORS



\$183,642

BEAU TUCKER, CCIM
806.470.3944
BTUCKER@CBCWORLDWIDE.COM
CBCLANDMAN.COM

©2022 Coldwell Banker Real Estate LLC, dba Coldwell Banker Commercial Capital Advisors. All rights reserved. Coldwell Banker Commercial® and the Coldwell Banker Commercial are registered service marks owned by Coldwell Banker Real Estate LLC. Coldwell Banker Real Estate LLC, dba Coldwell Banker Commercial Affiliates fully supports the principles of the Fair Housing Act and the Equal Opportunity Act. Each office is independently owned and operated. The information provided is deemed reliable, but it is not guaranteed to be accurate or complete, and it should not be relied upon as such. This information should be independently verified before any person enters into a transaction based upon it.



COLDWELL BANKER
COMMERCIAL
CAPITAL ADVISORS