

FOR LEASE

3874 Savannah Hwy Unit 1 | Johns Island, SC



COLDWELL BANKER
COMMERCIAL
ATLANTIC



OFFERING SUMMARY

Lease Rate:	\$16 PSF
Total Available:	1,200 SF
Lease Type:	NNN
Sub Type:	Neighborhood Center, Strip Center, Other
County:	Charleston County
Zoning:	CC - Community Commercial

PROPERTY OVERVIEW

This well-maintained center features excellent visibility from Savannah Highway and its 30,000 vehicles per day. There is only 1 space available with a square footage of 1,200 SF. The vacancies are vanilla box form. Future tenants will benefit from the newly-constructed Dollar General adjacent to the property, while being a part of the area's continued population growth, estimated at over 13% from 2017-2022 within a 5-mile radius. This center is located in unincorporated Charleston County and zoned Community Commercial.



COLDWELL BANKER
COMMERCIAL
ATLANTIC

3874 Savannah Hwy Unit 1 | Johns Island, SC 29455

Steve Hund • shund@cbcatlantic.com

1,200 SF	1,200 SF	1,200 SF	1,200 SF	1,200 SF	2,400 SF	2,400 SF
VACANT	Diamond Touch	J&R Liquor	Vape	Waste Management	King Beauty	Mazcalteca Bakery & Butcher
1	2	3	4	5	6&7	8&9

Red Top Village

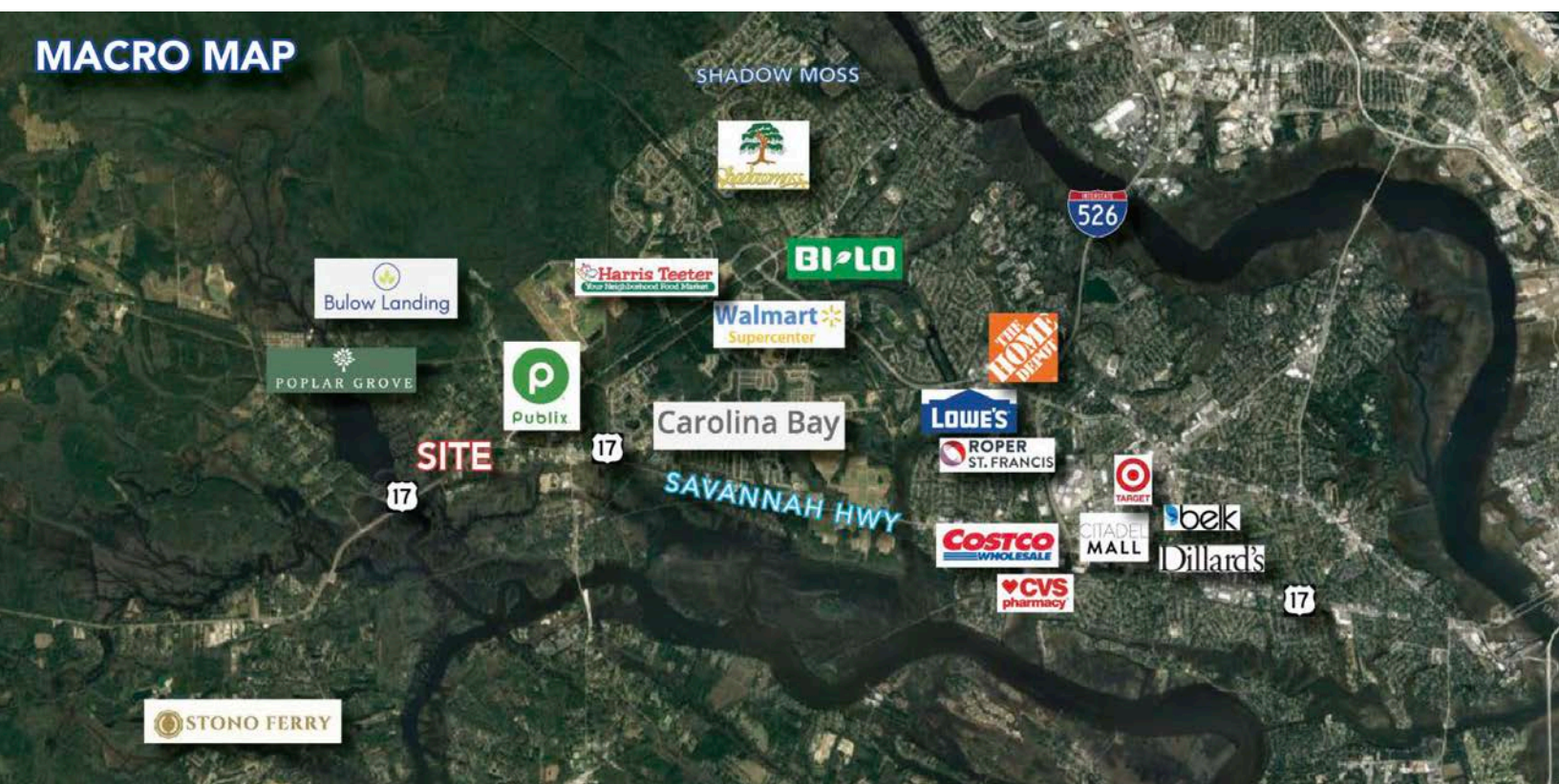
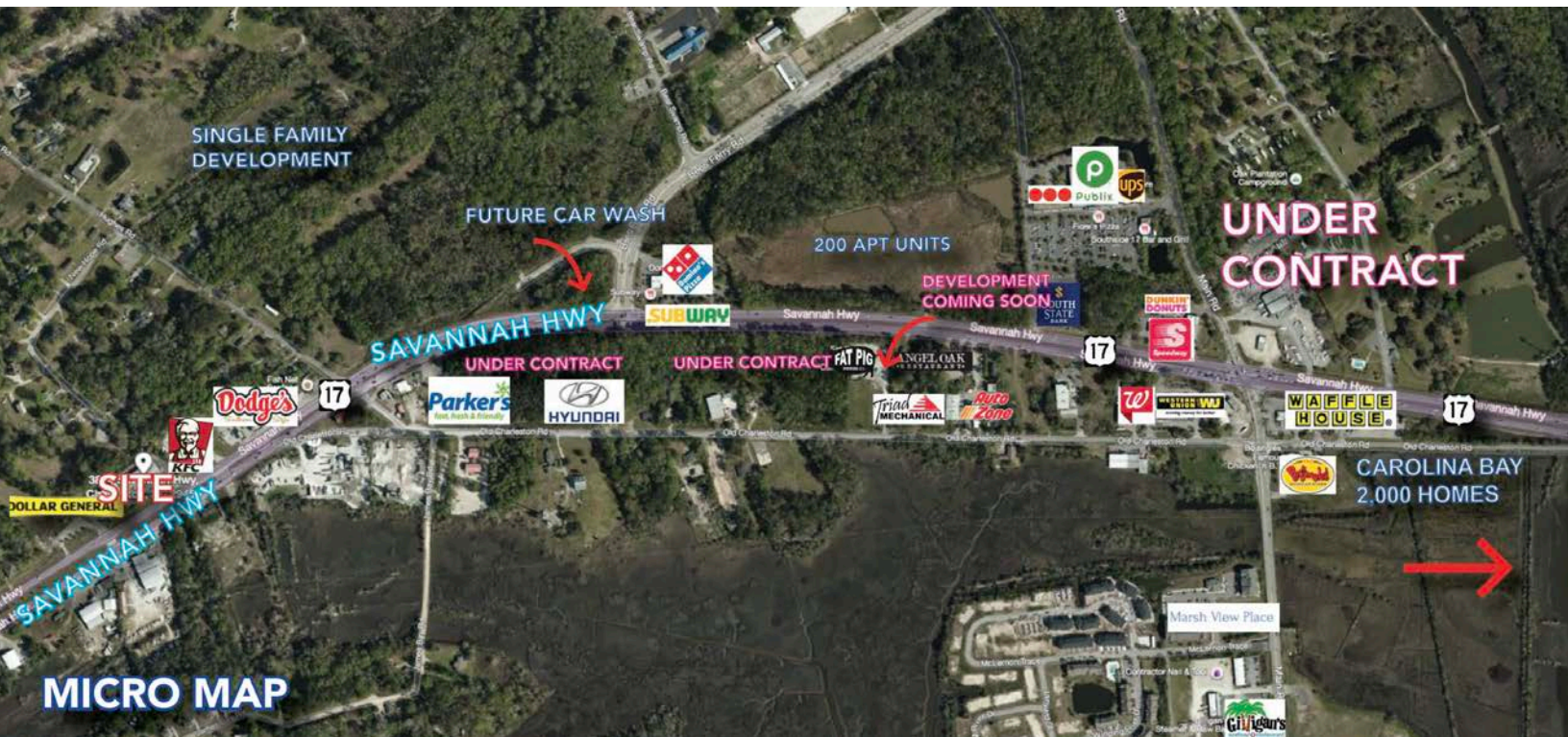




COLDWELL BANKER
COMMERCIAL
 ATLANTIC

3874 Savannah Hwy Unit 1 | Johns Island, SC 29455

Steve Hund • shund@cbcatlantic.com



Steve Hund
(C) 843.990.2417
shund@cbcatlantic.com

3506 W Montague Ave Suite 200
North Charleston, SC 29418
843.744.9877
cbcatlantic.com | cbcretailatlantic.com



**COLDWELL BANKER
COMMERCIAL
ATLANTIC**

The information contained herein should be considered confidential and remains the sole property of Coldwell Banker Commercial Atlantic at all times. Although every effort has been made to ensure accuracy, no liability will be accepted for any errors or omissions. Disclosure of any information contained herein is prohibited except with the express written permission of Coldwell Banker Commercial Atlantic.