



EVERYTHING REAL ESTATE 2 GENERATIONS

FOR SALE

4030 Beaufort Dr
Brookfield, WI

Contact:

Will Klumb
262.389.4924
Will@TeamKlumb.com

Ted Klumb
262.389.0905
Ted@TeamKlumb.com



**COLDWELL BANKER
COMMERCIAL
REALTY**

4030 Beaufort Dr, Brookfield, WI

LIST PRICE **\$199,900**
OR BUILD-TO-SUIT

PROPERTY SUMMARY

Land Acreage: 1.44 AC
Taxkey: BRC1024997012
Taxes (2022): \$3,894.25
Zoning: Planned Development District
Utilities: Pad Ready Site
Proposed Office Building: +/-5,720 SF
Proposed Parking Spaces: +/- 31



DEMOGRAPHICS

| POPULATION | 1 MILE | 3 MILES | 5 MILES |
|------------------|-----------|-----------|----------|
| Estimated (2021) | 6,061 | 34,604 | 103,731 |
| Median HH Income | \$114,860 | \$117,770 | \$93,275 |
| Median Age | 50.8 | 46.9 | 44.6 |

TRAFFIC COUNT

Capitol Dr (West of Calhoun Intersection) 36,500 VPD

HIGHLIGHTS

- Great for medical/office user.
- Excellent ingress and egress from Capitol Dr.
- Scenic pond and landscaping.
- Condominium ownership.
- Development subject to PDD agreement and requirements.

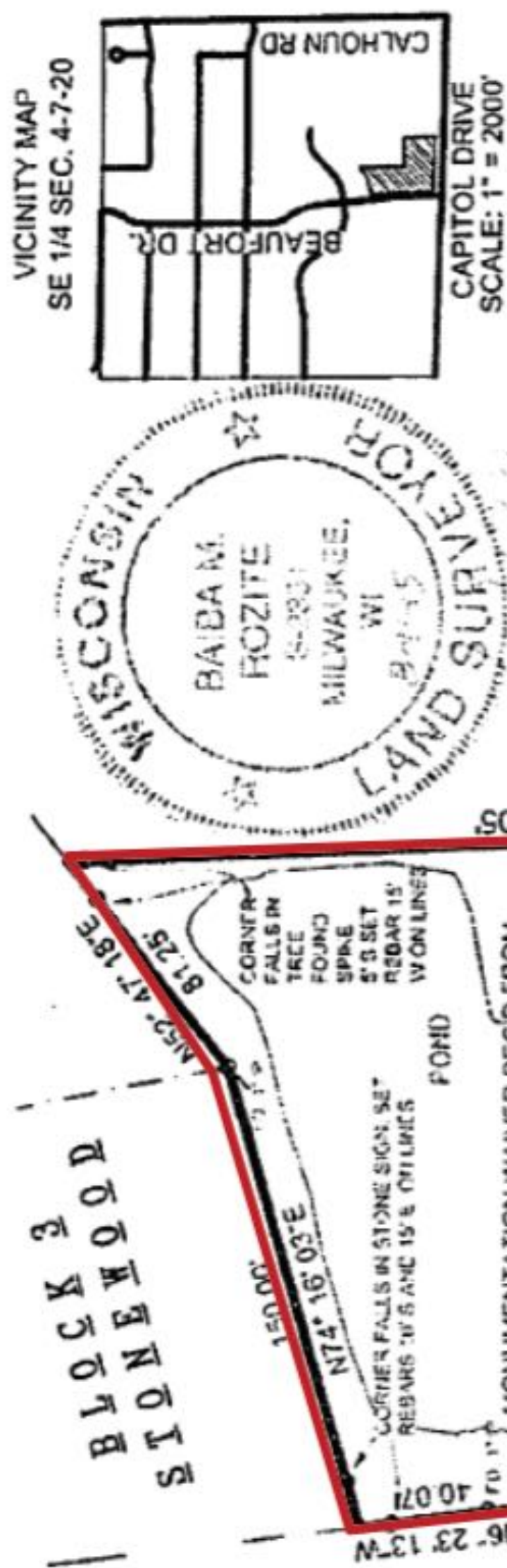
SUMMARY



COLDWELL BANKER
COMMERCIAL
REALTY

CERTIFIED SURVEY MAP NO. 11341

A REDIVISION OF LOT 1 OF CERTIFIED SURVEY MAP NO. 11088, RECORDED ON AUGUST 9, 2013 AS DOCUMENT NO. 4035560, IN THE SE 1/4 OF THE SE 1/4 SECTION 4, TOWNSHIP 7 NORTH, RANGE 20 EAST, CITY OF BROOKFIELD, WAUKESHA COUNTY, WISCONSIN



MONUMENTATION WAIVER REC'D FROM PLAT REVIEW IN LETTER DATED 8-05-2015

LOT 3
62856 SQ FT
1.44 ACRES

TOTAL CURVE:
L=389.75
R=2529.22
CH B=N2° 16' 22"W
CH L=389.36
TB=N2° 08' 30"E,
N6° 41' 15"W
Δ=8° 49' 45"

L=227.06'
R=2529.22'
LC=226.98'
LCB=N4° 06' 56"W
TB=N1° 32' 37"W,
N6° 41' 15"W
Δ=5° 08' 37"

L=162.69'
R=2529.22'
LC=162.66'
LCB=N0° 17' 57"
TB=N2° 08' 30"E
N1° 32' 37"W
Δ=3° 41' 08"

SOLD

SOLD

LEGEND & NOTES:

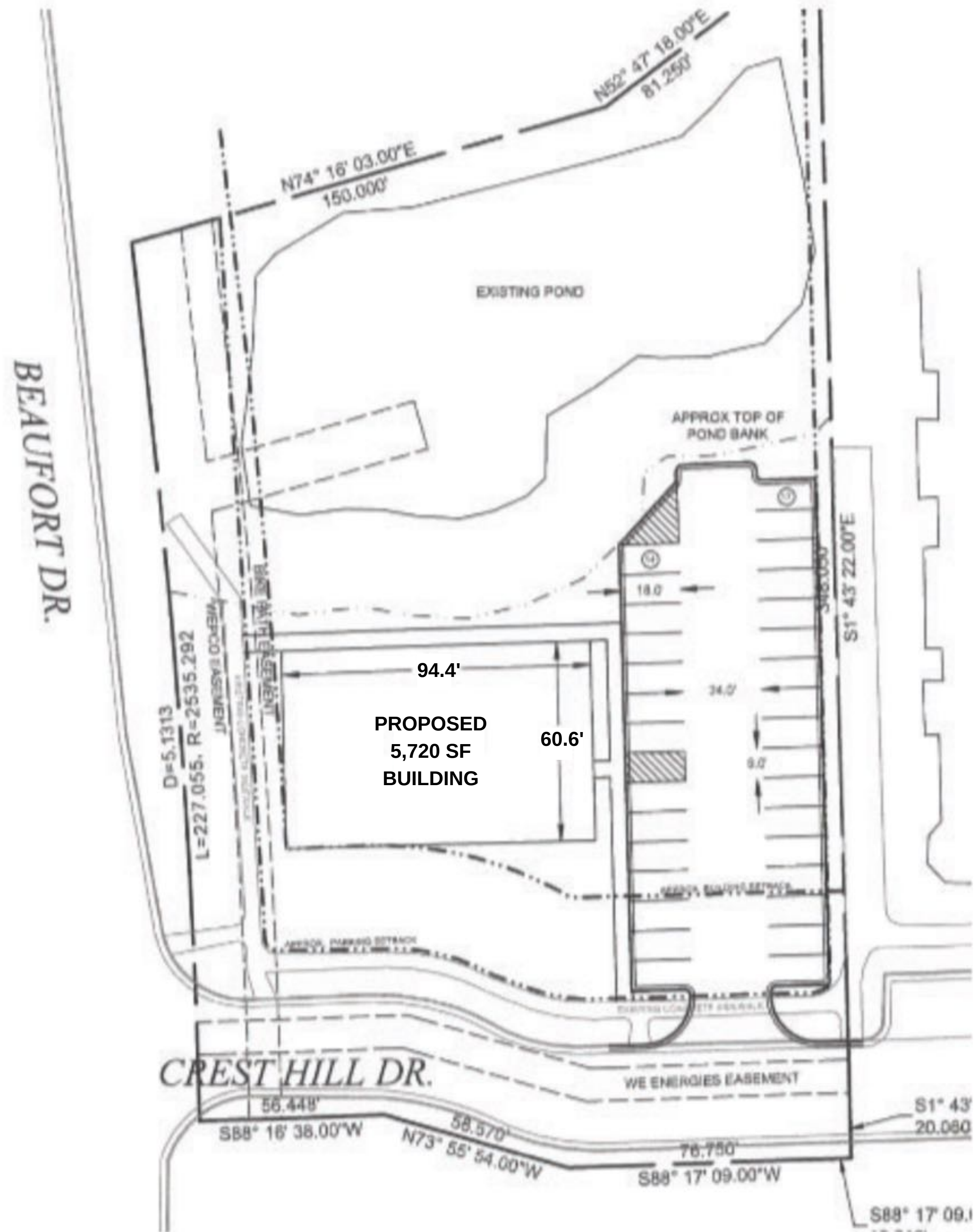
- INDICATES FOUND MONUMENTATION, AS NOTED ON DRAWING.
- INDICATES SET 3/4" DIAM. REBAR, 18" LONG WEIGHING 1.50 LBS/LIN. FT.
- COORDINATES & BEARINGS REFERENCED TO THE SOUTH LINE OF THE SE 1/4 OF SEC. 4-7-20 ASSUMED TO BEAR S 88° 28' 23" E, AS PUBLISHED BY SEWRPC, NAD 1927.
- OWNER: ANCHORBANK FSB C/O COLLIER'S INTERNATIONAL, 1243 N 10TH ST. STE. 300, MILWAUKEE, WI 53205
- SUBDIVIDER: TENDICK BUSINESS GROUP LLC, W305 N2784 FOXWOOD CT., PEWAUKEE, WI 53072
- TAX KEY NO.: BRC 1024-997-005, ADDRESS: 17400 W. CAPITOL DRIVE
- DISTANCES MEASURED TO THE NEAREST 0.01'. ANGLES MEASURED TO THE NEAREST 01'.



COLDWELL BANKER
COMMERCIAL
REALTY

GRAPHIC SCALE





PROPOSED CONCEPTUAL SITE PLAN



COLDWELL BANKER
COMMERCIAL
REALTY



LOCATION



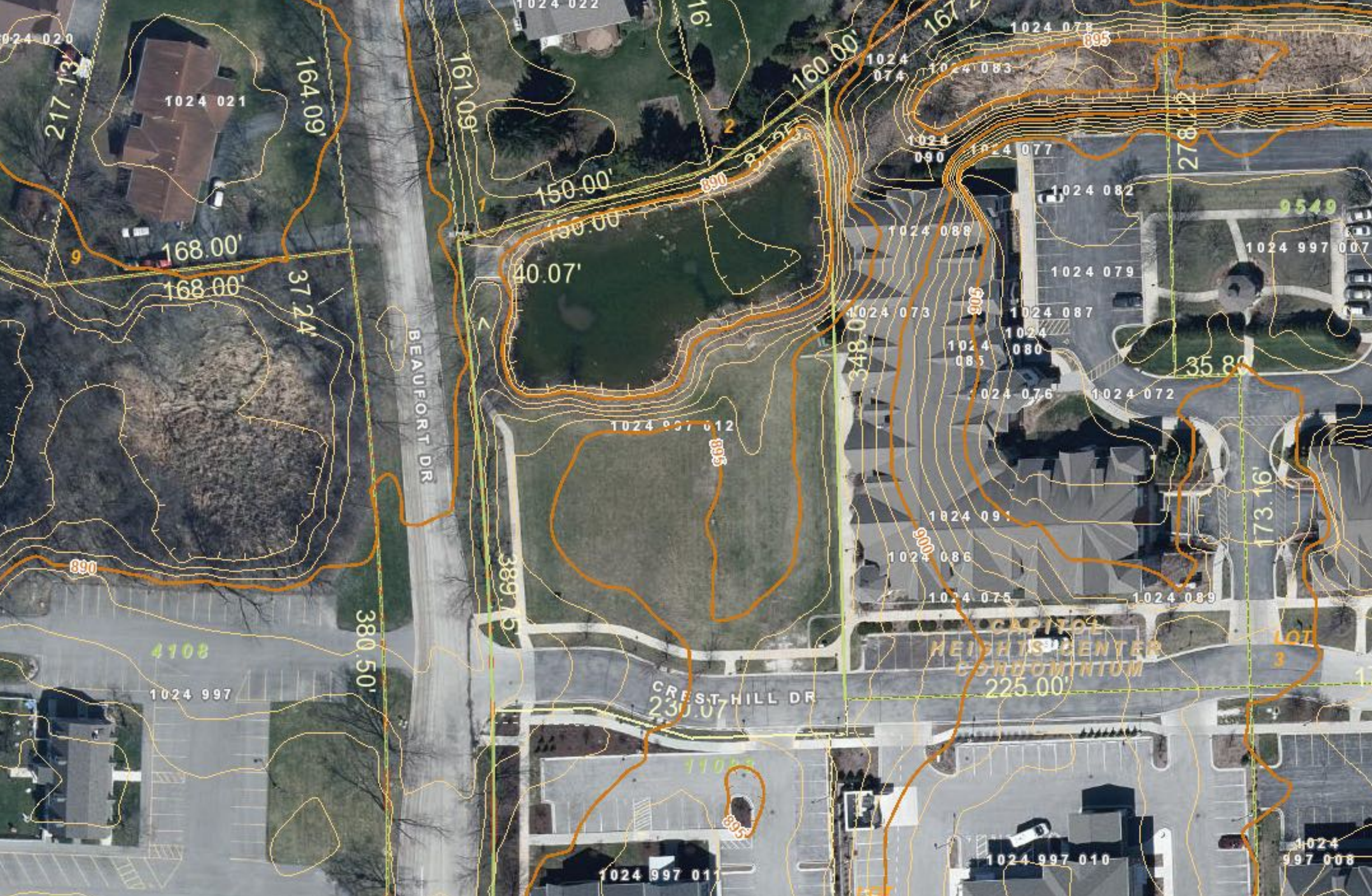
COLDWELL BANKER
COMMERCIAL
REALTY



ENVIRONMENTAL OVERLAY



COLDWELL BANKER
COMMERCIAL
REALTY



TOPOGRAPHY OVERLAY



COLDWELL BANKER
COMMERCIAL
REALTY

DISCLOSURE TO NON-RESIDENTIAL CUSTOMERS

Prior to negotiating on your behalf the brokerage firm, or an agent associated with the firm, must provide you the following disclosure statement:

DISCLOSURE TO CUSTOMERS

You are a customer of the brokerage firm (hereinafter Firm). The Firm is either an agent of another party in the transaction or a subagent of another firm that is the agent of another party in the transaction. A broker or a salesperson acting on behalf of the Firm may provide brokerage services to you. Whenever the Firm is providing brokerage services to you, the Firm and its brokers and salespersons (hereinafter Agents) owe you, the customer, the following duties:

- (a) The duty to provide brokerage services to you fairly and honestly.
- (b) The duty to exercise reasonable skill and care in providing brokerage services to you.
- (c) The duty to provide you with accurate information about market conditions within a reasonable time if you request it, unless disclosure of the information is prohibited by law.
- (d) The duty to disclose to you in writing certain Material Adverse Facts about a property, unless disclosure of the information is prohibited by law (see lines 42-51).
- (e) The duty to protect your confidentiality. Unless the law requires it, the Firm and its Agents will not disclose your confidential information or the confidential information of other parties (see lines 23-41).
- (f) The duty to safeguard trust funds and other property held by the Firm or its Agents.
- (g) The duty, when negotiating, to present contract proposals in an objective and unbiased manner and disclose the advantages and disadvantages of the proposals.

Please review this information carefully. An Agent of the Firm can answer your questions about brokerage services, but if you need legal advice, tax advice, or a professional home inspection, contact an attorney, tax advisor, or home inspector. This disclosure is required by section 452.135 of the Wisconsin statutes and is for information only. It is a plain-language summary of the duties owed to a customer under section 452.133(1) of the Wisconsin statutes.

CONFIDENTIALITY NOTICE TO CUSTOMERS

The Firm and its Agents will keep confidential any information given to the Firm or its Agents in confidence, or any information obtained by the Firm and its Agents that a reasonable person would want to be kept confidential, unless the information must be disclosed by law or you authorize the Firm to disclose particular information. The Firm and its Agents shall continue to keep the information confidential after the Firm is no longer providing brokerage services to you.

The following information is required to be disclosed by law:

- 1. Material Adverse Facts, as defined in Wis. Stat. § 452.01(5g) (see lines 42-51).
- 2. Any facts known by the Firm or its Agents that contradict any information included in a written inspection report on the property or real estate that is the subject of the transaction. To ensure that the Firm and its Agents are aware of what specific information you consider confidential, you may list that information below (see lines 35-41) or provide that information to the Firm or its Agents by other means. At a later time, you may also provide the Firm or its Agents with other Information you consider to be confidential.

CONFIDENTIAL INFORMATION:

NON-CONFIDENTIAL INFORMATION (the following information may be disclosed by the Firm and its Agents):

(Insert information you authorize to be disclosed, such as financial qualification information.)

DEFINITION OF MATERIAL ADVERSE FACTS

A "Material Adverse Fact" is defined in Wis. Stat. § 452.01(5g) as an Adverse Fact that a party indicates is of such significance, or that is generally recognized by a competent licensee as being of such significance to a reasonable party, that it affects or would affect the party's decision to enter into a contract or agreement concerning a transaction or affects or would affect the party's decision about the terms of such a contract or agreement. An "Adverse Fact" is defined in Wis. Stat. § 452.01(1e) as a condition or occurrence that a competent licensee generally recognizes will significantly and adversely affect the value of the property, significantly reduce the structural integrity of improvements to real estate, or present a significant health risk to occupants of the property; or information that indicates that a party to a transaction is not able to or does not intend to meet his or her obligations under a contract or agreement made concerning the transaction.

NOTICE ABOUT SEX OFFENDER REGISTRY

You may obtain information about the sex offender registry and persons registered with the registry by contacting the Wisconsin Department of Corrections on the Internet at <http://www.doc.wi.gov> or by telephone at 608-240-5830.

No representation is made as to the legal validity of any provision or the adequacy of any provision in any specific transaction.

**Copyright © 2016 by Wisconsin REALTORS®
Association Drafted by Attorney Debra Peterson Conrad**