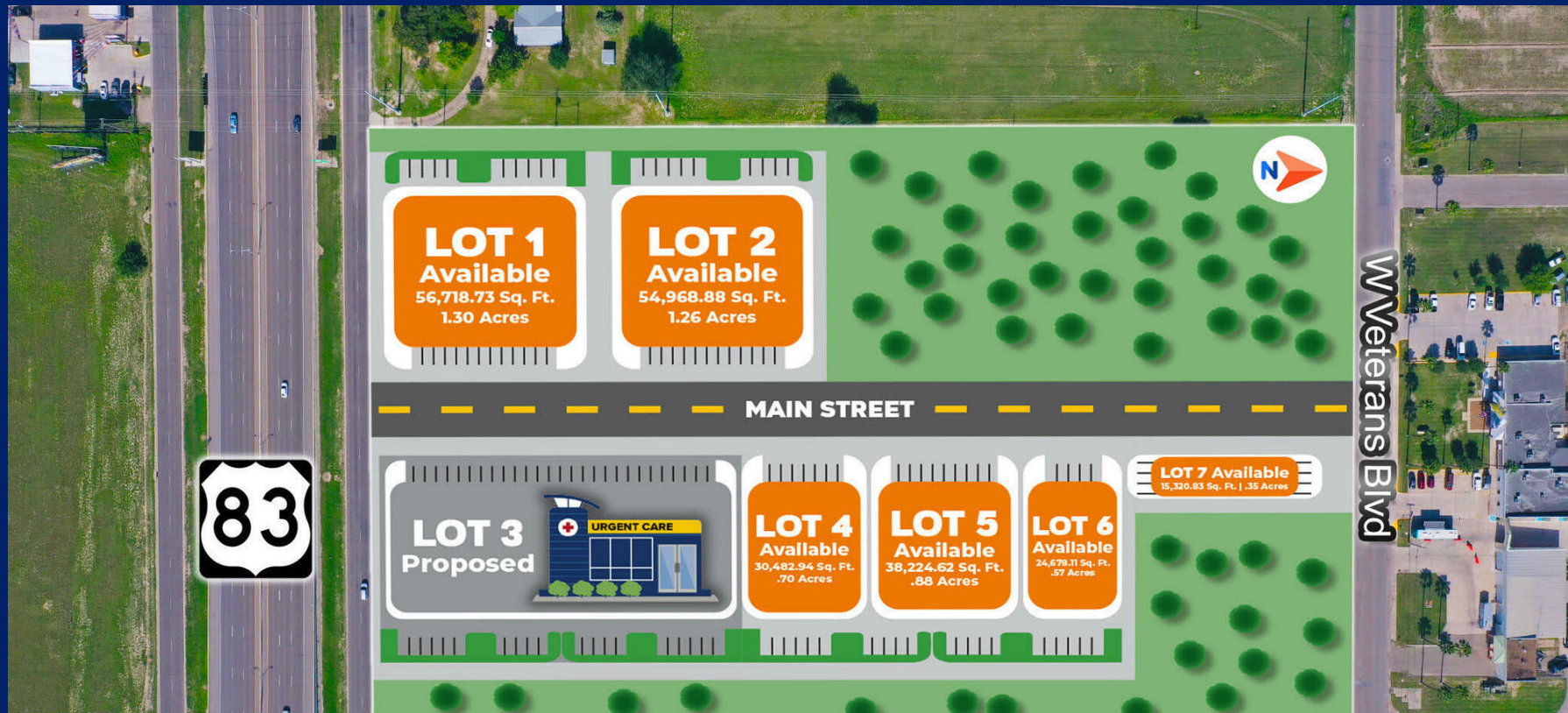


# DEVELOPMENT LAND-PALMVIEW, TX

401 W. PALMA VISTA DRIVE

Palmview, TX 78572



PAD SITES AVAILABLE

Michael Pacheco

956 739 5172

michael.pacheco@cbcworldwide.com



**COLDWELL BANKER  
COMMERCIAL**  
RIO  
GRANDE VALLEY

# DEVELOPMENT LAND- PALMVIEW, TX

401 W. PALMA VISTA DRIVE

Palmview, TX 78572



## PROPERTY DESCRIPTION

Palmview, TX is set to welcome a new mixed-use development that promises to transform the city's landscape. The development, which is being built on an 8-acre site, will feature a range of retail, office, and commercial pad sites. The project is expected to create a significant number of jobs and attract new businesses to the area, making Palmview an even more attractive place to live and work.

## PROPERTY HIGHLIGHTS

- Expressway Frontage
- Excellent Visibility
- Proximity to Hospitals and National Retailers

## DEMOGRAPHICS

	1 MILE	3 MILES	5 MILES
Total Households	2,477	20,456	39,508
Total Population	7,900	60,900	117,036
Average HH Income	\$47,057	\$46,438	\$48,769

Michael Pacheco

956 739 5172

michael.pacheco@cbcworldwide.com



COLDWELL BANKER  
COMMERCIAL  
RIO  
GRANDE VALLEY





# DEVELOPMENT LAND - PALMVIEW, TX

401 W. PALMA VISTA DRIVE

Palmview, TX 78572



**Michael Pacheco**

956 739 5172

michael.pacheco@cbcworldwide.com



**COLDWELL BANKER  
COMMERCIAL**

RIO  
GRANDE VALLEY



# DEVELOPMENT LAND - PALMVIEW, TX

401 W. PALMA VISTA DRIVE

Palmview, TX 78572



# OF LOTS: 6 | TOTAL LOT SIZE: 15,320 SF - 56,718 SF | BEST USE: RETAIL, OFFICE, PROFESSIONAL SERVICE |

STATUS	LOT #	SUB-TYPE	SIZE	PRICE
Available	1	Retail-Pad	56,718 SF	\$16/SF
Available	2	Retail-Pad	54,968 SF	\$16/SF
Available	4	Retail-Pad	30,482 SF	\$16/SF
Available	5	Retail-Pad	38,224 SF	\$16/SF
Available	6	Retail-Pad	34,678 SF	\$16/SF
Available	7	Retail-Pad	15,320 SF	\$16/SF

Michael Pacheco  
956 739 5172  
michael.pacheco@cbcworldwide.com



# DEVELOPMENT LAND- PALMVIEW, TX

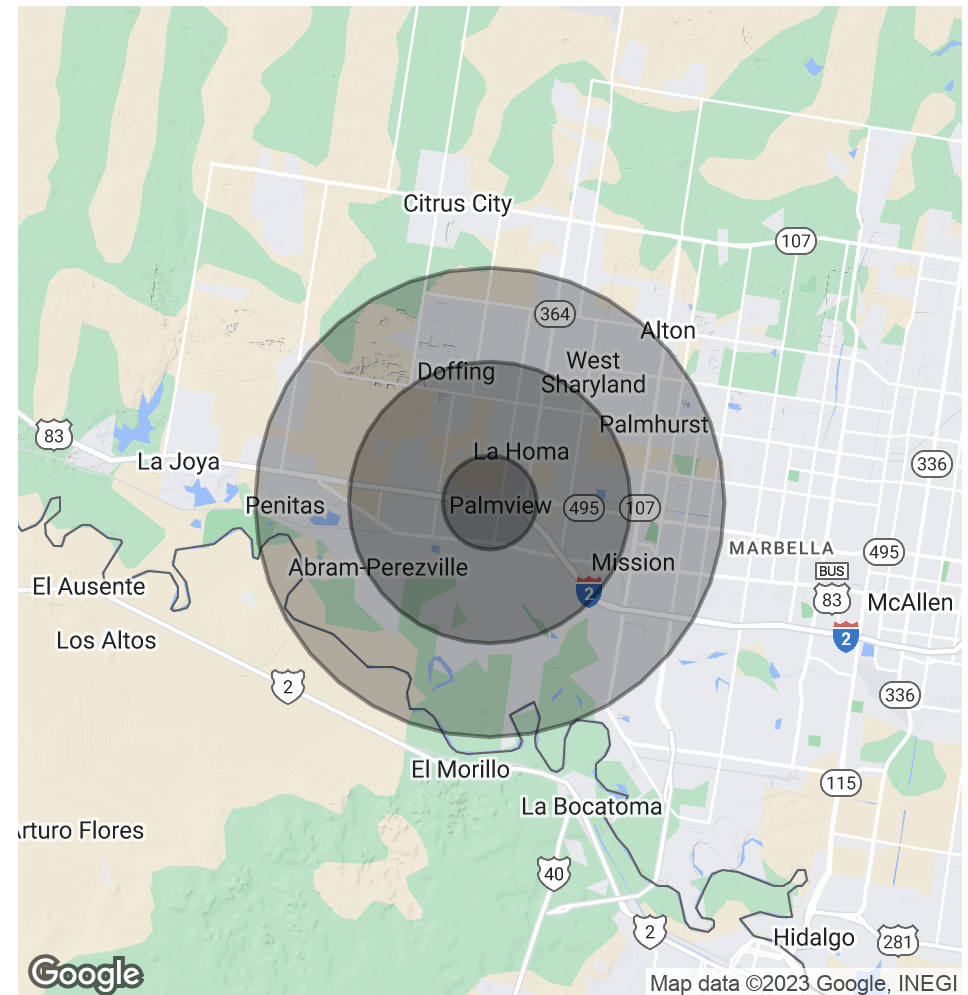
401 W. PALMA VISTA DRIVE

Palmview, TX 78572

POPULATION	1 MILE	3 MILES	5 MILES
Total Population	7,900	60,900	117,036
Average Age	34	33	32.9
Average Age (Male)	32.8	31.5	31.7
Average Age (Female)	37.6	35.7	35

HOUSEHOLDS & INCOME	1 MILE	3 MILES	5 MILES
Total Households	2,477	20,456	39,508
# of Persons per HH	3.2	3	3
Average HH Income	\$47,057	\$46,438	\$48,769
Average House Value	\$100,436	\$99,123	\$105,036

\* Demographic data derived from 2020 ACS - US Census



**Michael Pacheco**

956 739 5172

michael.pacheco@cbcworldwide.com



**COLDWELL BANKER  
COMMERCIAL**

RIO  
GRANDE VALLEY