



## NWC OF FM 179 & DONALD PRESTON DRIVE

Wolfforth, TX 79382

LAND



## QUICK FACTS



PURCHASE PRICE

**\$20 PER SQ. FT.**



TOTAL ACREAGE

**3 AC**



ZONING

**COMMERCIAL**

[CBCWORLDWIDE.COM](http://CBCWORLDWIDE.COM)

BEAU TUCKER, CCIM  
806.470.3944  
[BTUCKER@CBCWORLDWIDE.COM](mailto:BTUCKER@CBCWORLDWIDE.COM)  
[CBCLANDMAN.COM](http://CBCLANDMAN.COM)

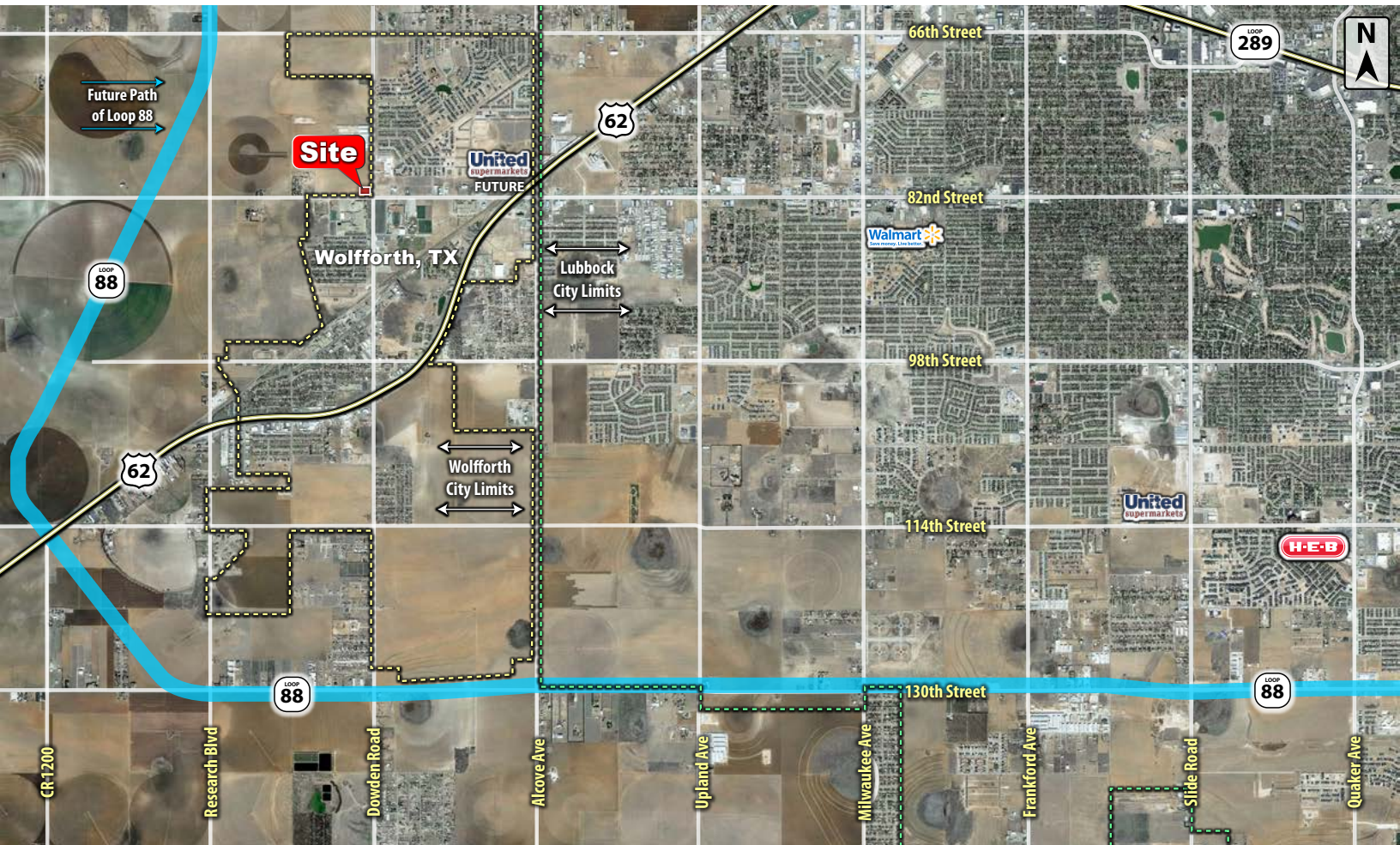


**COLDWELL BANKER  
COMMERCIAL**  
CAPITAL ADVISORS





## TRADE AREA & INFORMATION



## LOCATION

Located on the northwest corner of FM 179 and Donald Preston Drive (which becomes 82nd Street as it travels east in to the City of Lubbock).

## DESCRIPTION

A rectangular commercial tract of land located on a hard corner. Across FM 179 from the location of a to-be-built CVS store and across Donald Preston Drive from Frenship ISD High School.

## OPTIONS

3 Acres at \$20.00 per Sq. Ft.



**COLDWELL BANKER  
COMMERCIAL**  
CAPITAL ADVISORS



POPULATION	1 MILE	3 MILES	5 MILES
TOTAL POPULATION	3,411	18,570	66,530
MEDIAN AGE	33.1	32.3	32.9
MEDIAN AGE (MALE)	34.4	33.0	33.5
MEDIAN AGE (FEMALE)	31.7	31.6	32.2
HOUSEHOLDS & INCOME	1 MILE	3 MILES	5 MILES
TOTAL HOUSEHOLDS	1,170	6,749	26,617
# OF PERSONS PER HH	2.9	2.7	2.5
AVERAGE HH INCOME	\$93,558	\$90,395	\$81,070
AVERAGE HOUSE VALUE	\$196,390	\$183,781	\$190,559

**BEAU TUCKER, CCIM**  
**806.470.3944**  
**BTUCKER@CBCWORLDWIDE.COM**  
**CBCLANDMAN.COM**

©2022 Coldwell Banker Real Estate LLC, dba Coldwell Banker Commercial Capital Advisors. All rights reserved. Coldwell Banker Commercial® and the Coldwell Banker Commercial are registered service marks owned by Coldwell Banker Real Estate LLC. Coldwell Banker Real Estate LLC, dba Coldwell Banker Commercial Affiliates fully supports the principles of the Fair Housing Act and the Equal Opportunity Act. Each office is independently owned and operated. The information provided is deemed reliable, but it is not guaranteed to be accurate or complete, and it should not be relied upon as such. This information should be independently verified before any person enters into a transaction based upon it.



**COLDWELL BANKER**  
**COMMERCIAL**  
CAPITAL ADVISORS