

# LEASE

## 2500 CHERRY

2500 Cherry Pl Bremerton, WA 98310



### OFFERING SUMMARY

Lease Rate: Negotiable

Building Size: 16,175 SF

Available SF: 858 - 10,550 SF

Lot Size: 1.41 Acres

Year Built: 1976

Zoning: EC

### PROPERTY OVERVIEW

The 2500 Cherry Professional Building is located in the Sheridan Park neighborhood of East Bremerton; a quick ferry ride from downtown Seattle.

Located in the Historic Manette District of Bremerton, the 2500 Cherry building delivers the experience of modern image, efficient design, and the best branded image for the medical professional.

### PROPERTY HIGHLIGHTS

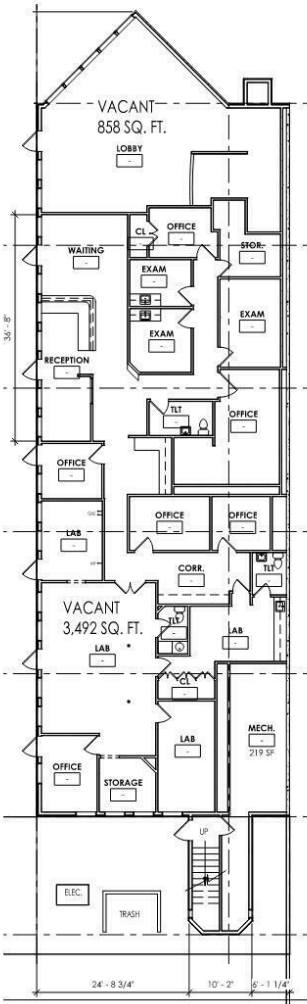
- Puget Sound & Dyes Inlet View
- Entire floors available, or option to demise into smaller spaces
- Current floorplans can be modified to preferred specifications and layout
- Tenant Improvement Packages Available
- 97 Parking Stalls

**Brandon Thomas**  
206 303 9595  
bthomas@cbcworldwide.com



**COLDWELL BANKER  
COMMERCIAL  
DANFORTH**

Floor 1  
4,350 SF



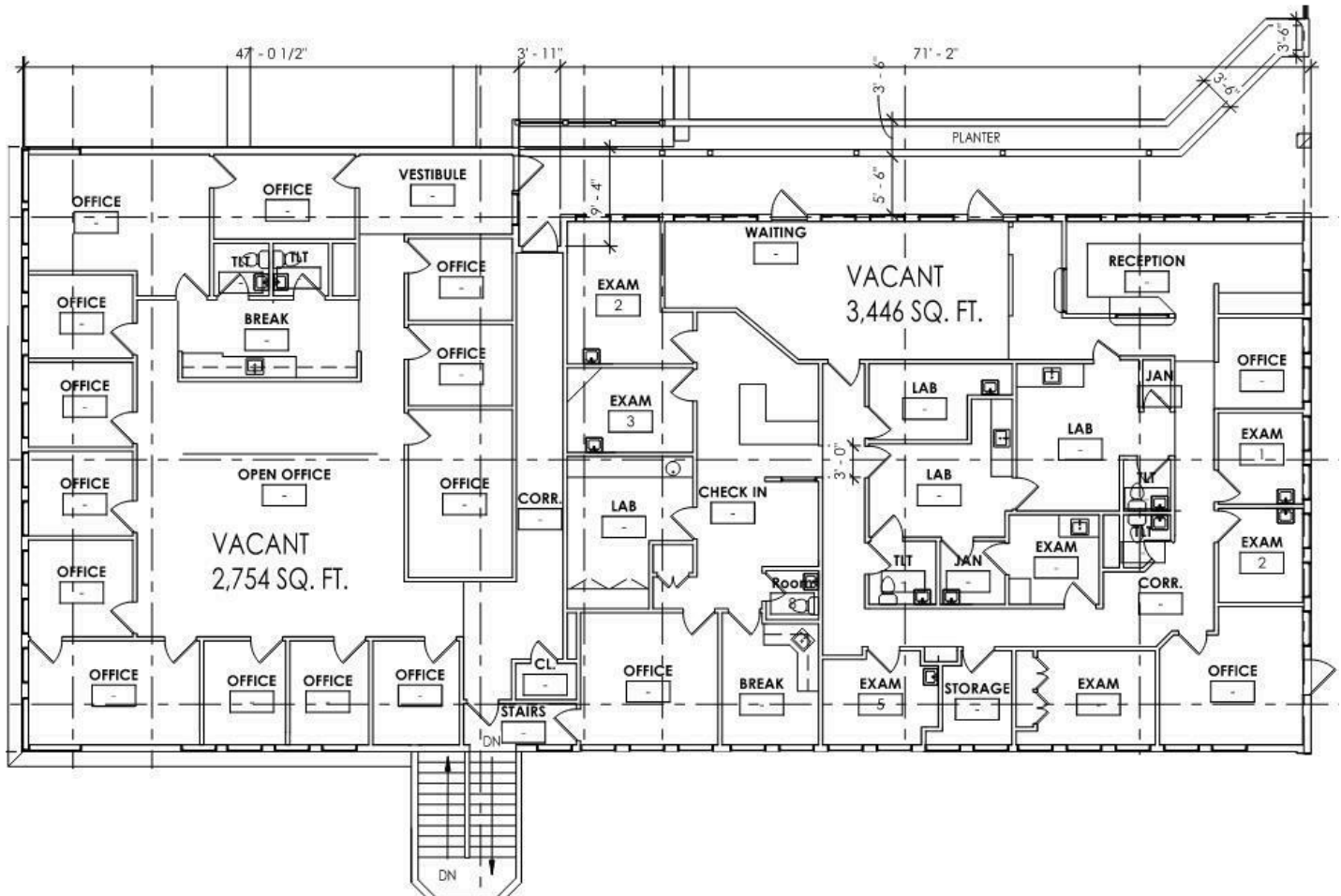
AVAILABLE SPACES

SUITE	SIZE (SF)	LEASE TYPE	LEASE RATE
1st Floor	858 - 4,350 SF	NNN	Negotiable

Brandon Thomas  
206 303 9595  
bthomas@cbcworldwide.com



### Floor 3 6,200 SF



#### AVAILABLE SPACES

SUITE	SIZE (SF)	LEASE TYPE	LEASE RATE
3rd Floor	2,754 - 6,200 SF	NNN	Negotiable

**Brandon Thomas**  
206 303 9595  
bthomas@cbcworldwide.com



**COLDWELL BANKER  
COMMERCIAL  
DANFORTH**

# LEASE

## 2500 CHERRY

2500 Cherry Pl Bremerton, WA 98310



**Brandon Thomas**  
206 303 9595  
bthomas@cbcworldwide.com

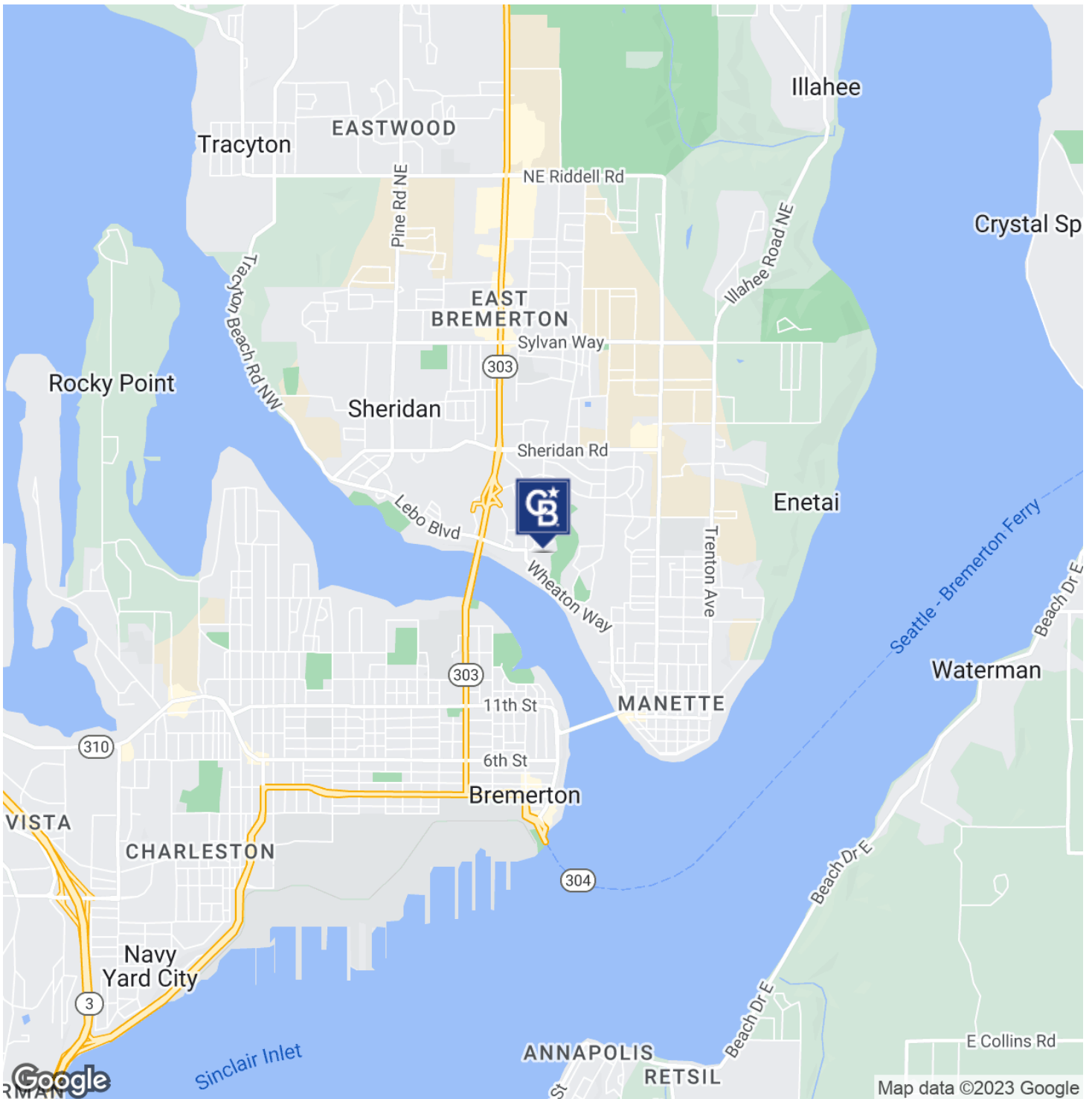


**COLDWELL BANKER  
COMMERCIAL  
DANFORTH**

# LEASE

## 2500 CHERRY

2500 Cherry Pl Bremerton, WA 98310



**Brandon Thomas**  
206 303 9595  
bthomas@cbcworldwide.com



**COLDWELL BANKER  
COMMERCIAL  
DANFORTH**