

FOR SALE LAND



N Rockton Ave & 29XX City View Dr, Rockford, IL 61103 ROCKFORD COMMERCIAL LAND

Property Information

SIZE

1.82 AC / 79,188 SF

PRICE

\$100,000

FEATURES

- C-1 Commercial Zoning
- Surrounded by Rooftops
- Near Signalized Intersection of N Rockton Ave & W Riverside Blvd



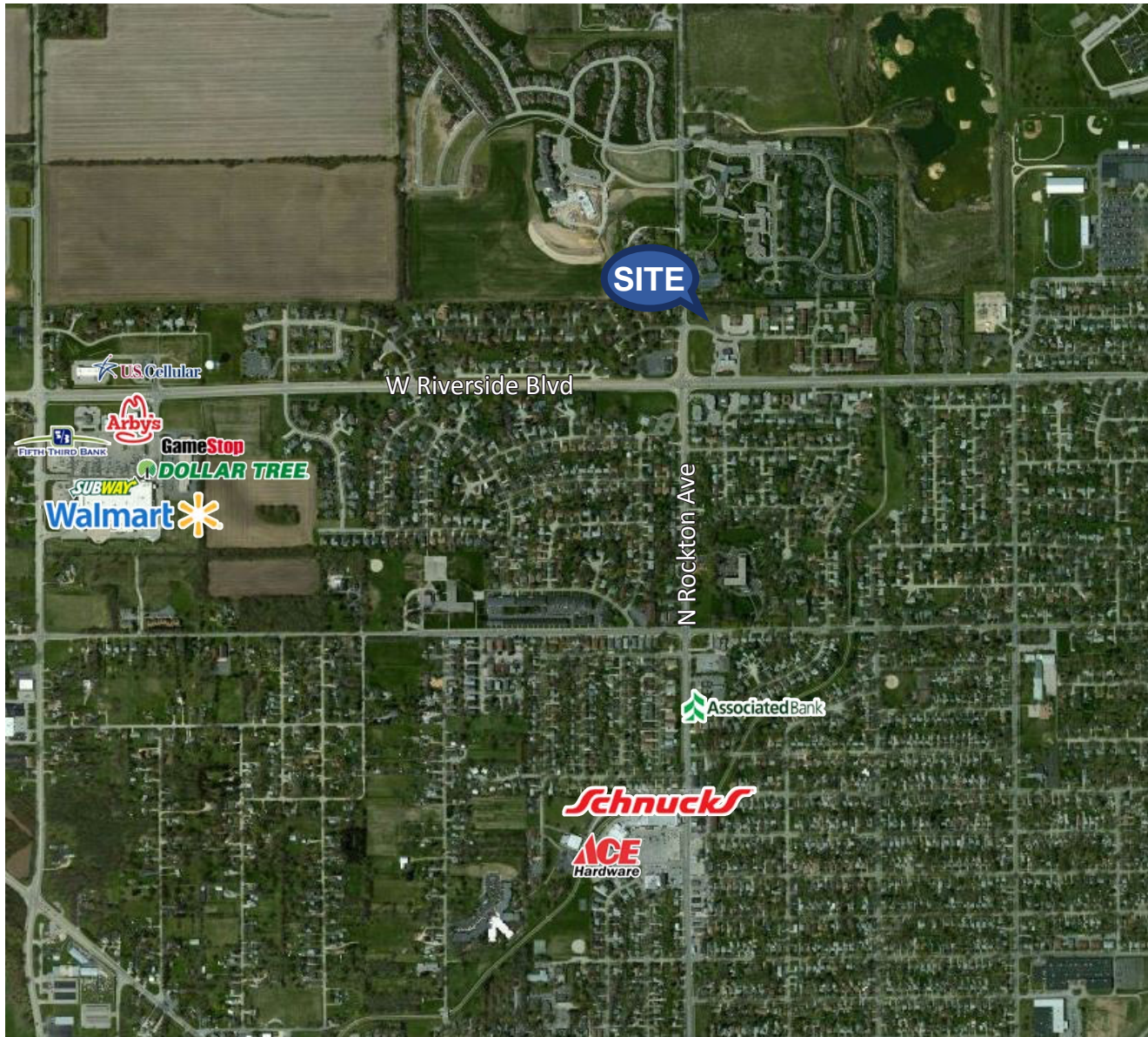
William E Mears, CCIM, SIOR
Managing Broker
608-314-8251
bill@mcguiremears.com

MCGUIREMEARS.COM

©2017 Coldwell Banker Real Estate LLC, dba Coldwell Banker Commercial Affiliates. All Rights Reserved. Coldwell Banker Real Estate LLC, dba Coldwell Banker Commercial Affiliates fully supports the principles of the Equal Opportunity Act. Each Office is Independently Owned and Operated. Coldwell Banker Commercial and the Coldwell Banker Commercial Logo are registered service marks owned by Coldwell Banker Real Estate LLC, dba Coldwell Banker Commercial Affiliates. All information contained herein has been obtained from sources deemed reliable. However, no warranty or guarantee is made as to the accuracy of the information.

Coldwell Banker Commercial
McGuire Mears & Associates
400 Midland Ct Ste 101
Janesville, WI 53546
608-752-6325

FOR SALE LAND



DEMOGRAPHICS	1-mi.	3-mi.	5-mi.
Population	8,777	56,171	141,472
Total Households	3,812	22,525	55,901
Median Household Income	\$35,549	\$35,430	\$38,899
Average Household Income	\$46,253	\$47,248	\$53,681

MCGUIREMEARS.COM

©2017 Coldwell Banker Real Estate LLC, dba Coldwell Banker Commercial Affiliates. All Rights Reserved. Coldwell Banker Real Estate LLC, dba Coldwell Banker Commercial Affiliates fully supports the principles of the Equal Opportunity Act. Each Office is Independently Owned and Operated. Coldwell Banker Commercial and the Coldwell Banker Commercial Logo are registered service marks owned by Coldwell Banker Real Estate LLC, dba Coldwell Banker Commercial Affiliates. All information contained herein has been obtained from sources deemed reliable. However, no warranty or guarantee is made as to the accuracy of the information.

Coldwell Banker Commercial
McGuire Mears & Associates
400 Midland Ct Ste 101
Janesville, WI 53546
608-752-6325