

DOWNTOWN SPACE FOR LEASE

1200 MAIN STREET | LAFAYETTE, IN 47901



LEASE RATE

Negotiable, Modified Gross

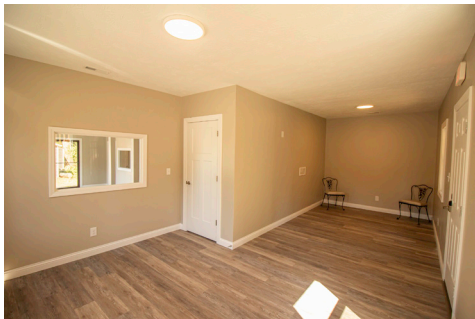
SPACE AVAILABLE

1,000 SF (+/-) main building

SUMMARY

Amazing stand-alone building offers abundant parking and potential access to a large (on property) garage in Lafayette's expanding downtown area. With great visibility from Main Street, this is an excellent opportunity for any office or retail user.

Located at the fast-growing east end of downtown Lafayette. This property is within short walking distance of all downtown attractions including restaurants, newly built apartments, and retail shops, and is only a short drive to West Lafayette and Purdue University's campus.



TODD MURRAY • 312-810-5565 • TMURRAY@SHOOK.COM

© 2023 Coldwell Banker Real Estate LLC, dba Coldwell Banker Commercial Affiliates. All Rights Reserved. Coldwell Banker Real Estate LLC, dba Coldwell Banker Commercial Affiliates fully supports the principles of the Equal Opportunity Act. Each Office is Independently Owned and Operated. Coldwell Banker Commercial and the Coldwell Banker Commercial Logo are registered service marks owned by Coldwell Banker Real Estate LLC, dba Coldwell Banker Commercial Affiliates.



DOWNTOWN SPACE FOR LEASE

1200 MAIN STREET | LAFAYETTE, IN 47901



**COLDWELL BANKER
COMMERCIAL**

SHOOK

TODD MURRAY

312-810-5565 | tmurray@shook.com

© 2022 Coldwell Banker Real Estate LLC, dba Coldwell Banker Commercial Affiliates. All Rights Reserved. Coldwell Banker Real Estate LLC, dba Coldwell Banker Commercial Affiliates fully supports the principles of the Equal Opportunity Act. Each Office is Independently Owned and Operated. Coldwell Banker Commercial and the Coldwell Banker Commercial Logo are registered service marks owned by Coldwell Banker Real Estate LLC, dba Coldwell Banker Commercial Affiliates.