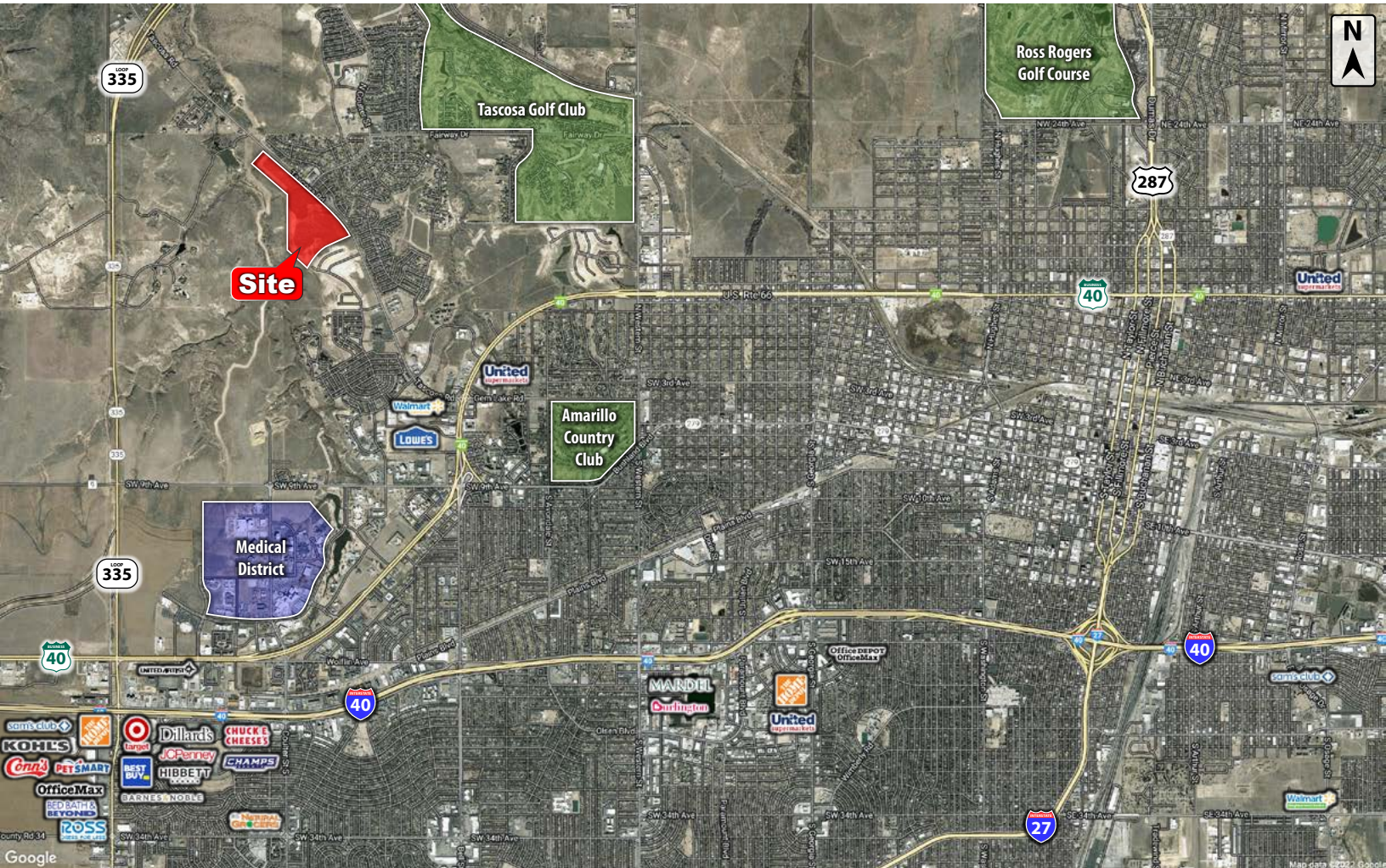




ESTANCIA SUBDIVISION ADDITION

Tascosa Road & N Coulter Street, Amarillo, TX 79124

LAND



QUICK FACTS



PURCHASE PRICE

\$40,000 PER ACRE



TOTAL ACREAGE

91.62 AC



ZONING

**RESIDENTIAL
& COMMERCIAL**

CBCWORLDWIDE.COM

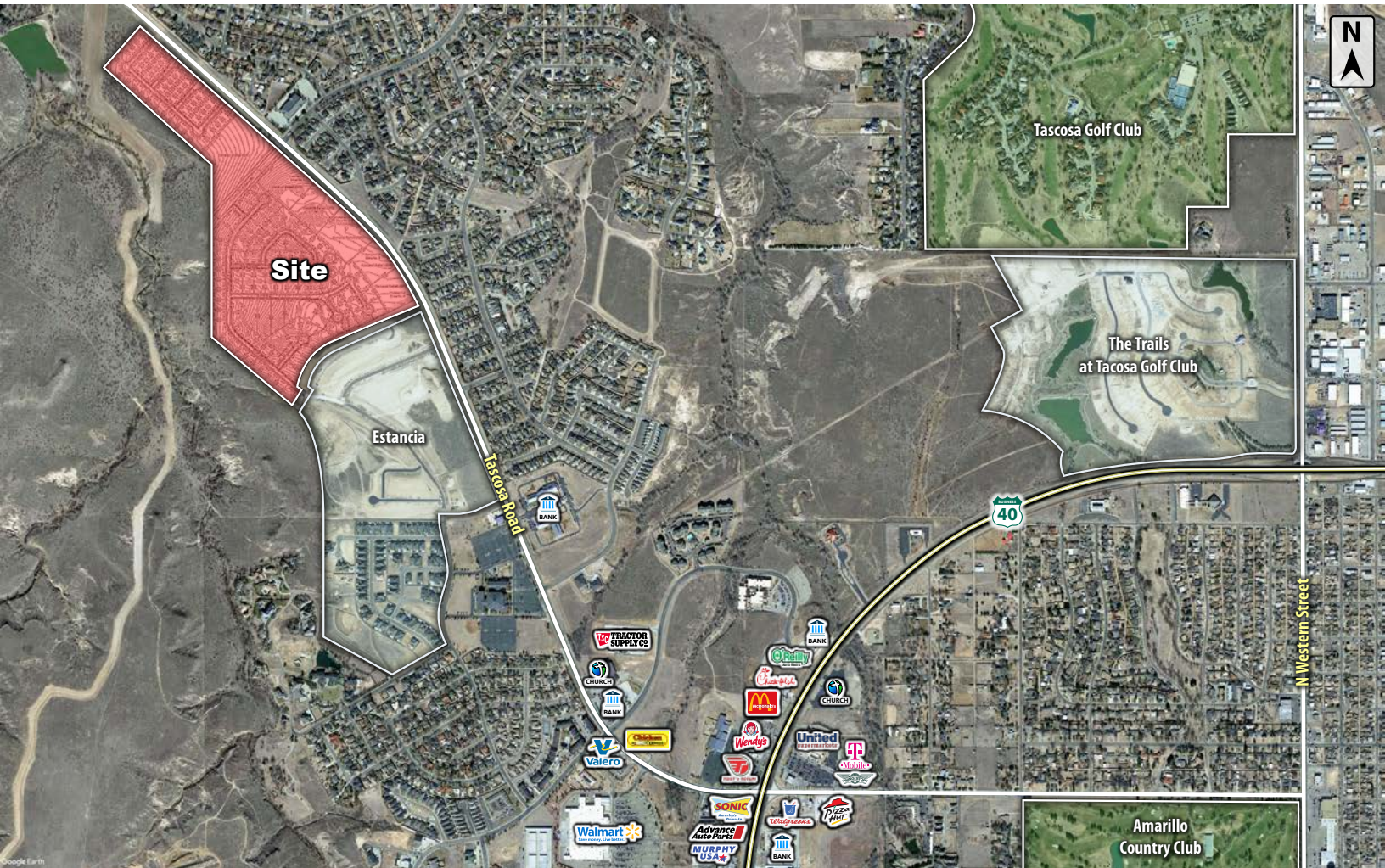
BEAU TUCKER, CCIM
806.470.3944
BTUCKER@CBCWORLDWIDE.COM
CBLANDMAN.COM



**COLDWELL BANKER
COMMERCIAL**
CAPITAL ADVISORS



TRADE AREA & INFORMATION



LOCATION

Located on the southwest side of Tascosa Road in between N Coulter Street & Estancia Drive in Amarillo, TX.

DESCRIPTION

This large residential development tract in the heart of growing northwest Amarillo is primed and ready for residential development. The medical district is less than 3 miles away, the South Soncy Retail Corridor is 5 miles away and all major golf courses are within an 8 minute drive.

OPTIONS

91.62 Acres - \$40,000 per net Acre



**COLDWELL BANKER
COMMERCIAL**
CAPITAL ADVISORS



POPULATION	1 MILE	3 MILES	5 MILES
TOTAL POPULATION	10,239	57,661	141,639
MEDIAN AGE	37.2	37.6	36.2
MEDIAN AGE (MALE)	34.4	35.9	34.9
MEDIAN AGE (FEMALE)	39.9	39.4	37.6
HOUSEHOLDS & INCOME	1 MILE	3 MILES	5 MILES
TOTAL HOUSEHOLDS	4,068	24,865	57,785
# OF PERSONS PER HH	2.4	2.3	2.4
AVERAGE HH INCOME	\$62,718	\$77,606	\$73,815
AVERAGE HOUSE VALUE	\$110,149	\$163,532	\$152,793

BEAU TUCKER, CCIM
806.470.3944
BTUCKER@CBCWORLDWIDE.COM
CBCLANDMAN.COM

©2022 Coldwell Banker Real Estate LLC, dba Coldwell Banker Commercial Capital Advisors. All rights reserved. Coldwell Banker Commercial® and the Coldwell Banker Commercial are registered service marks owned by Coldwell Banker Real Estate LLC. Coldwell Banker Real Estate LLC, dba Coldwell Banker Commercial Affiliates fully supports the principles of the Fair Housing Act and the Equal Opportunity Act. Each office is independently owned and operated. The information provided is deemed reliable, but it is not guaranteed to be accurate or complete, and it should not be relied upon as such. This information should be independently verified before any person enters into a transaction based upon it.



COLDWELL BANKER
COMMERCIAL
CAPITAL ADVISORS