



COLDWELL BANKER
COMMERCIAL
ATLANTIC



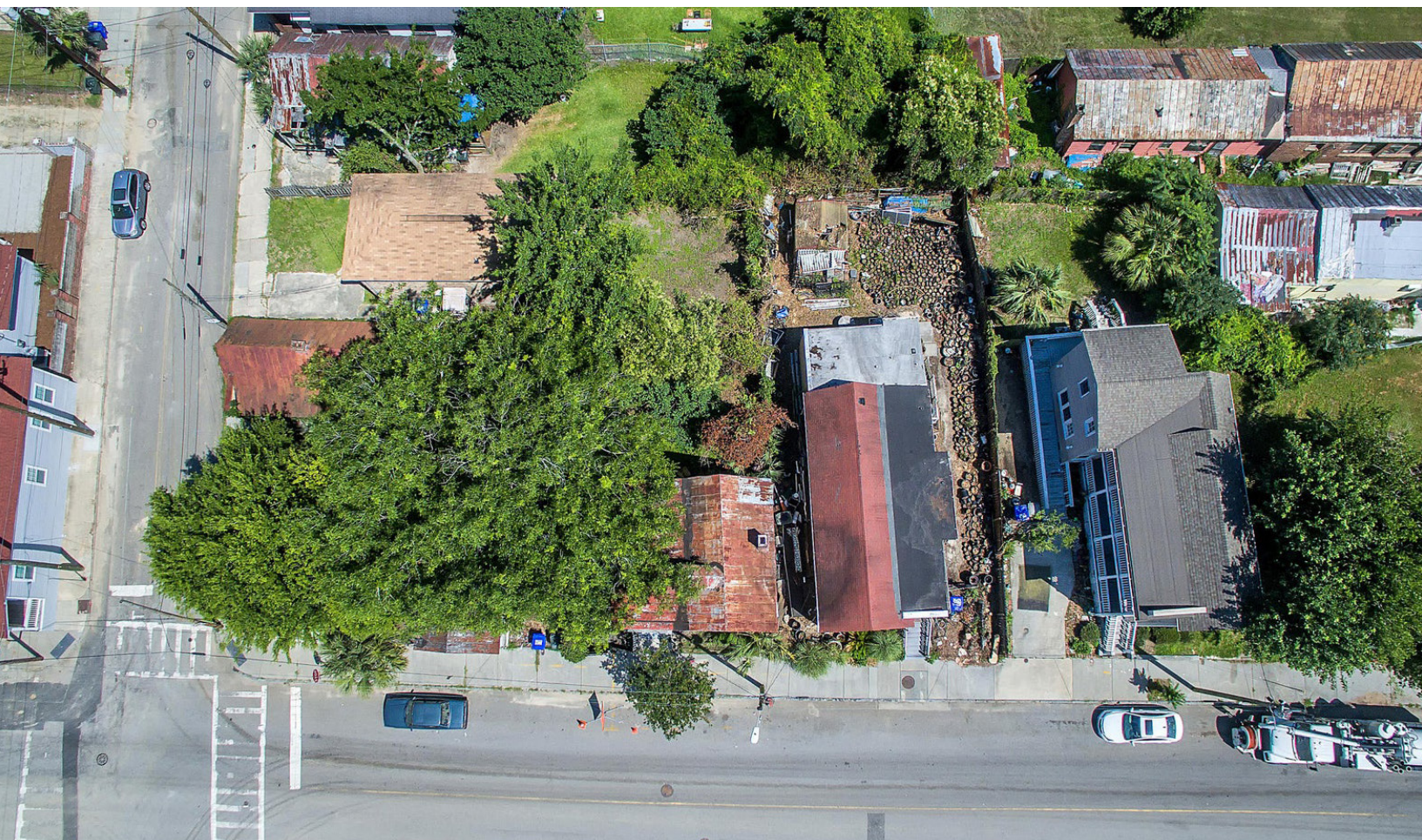
68 Lee Street Unit A & B Charleston, SC 29403

Don't miss this Incredible Opportunity to Own a Duplex in Historic Cannonborough / Elliotborough area of vibrant Downtown Charleston between Meeting St and East Bay St. This is in the Opportunity Zone for Tax benefits. Views of Ravenal Bridge from property with open green space in front. There are two units 1/ BR/ 1BA each unit and one off street parking space is included in sale. Total of 1334 SF, Unit A is on the first floor with one bedroom one bath, kitchen laundry area and 2 common areas. Unit B includes a second and third floor with 1 bedroom, one bath, living room, kitchen and additional flex space or office. Surrounding the Duplex are pockets of new developments including Restaurants, Entertainment and Student housing. Proposed LowCountry Lowline project with walking and biking pathways. Access to I26, 526, 10 miles to CHS airport, Mt Pleasant, Beaches, Biking distance to CofC and MUSC. Sold 'As Is'

Total Units:	2	Price:	\$495,000
Parcel Number:	4590501085	Rentable Square Footage:	1,334 SF
Number of Buildings:	1	Zoning:	DR-2: Diverse Residential Zoning
Number of Stories:	2	Unit A:	1 BD/1 BA
Year Built:	1920	Unit B:	1 BD/1 BA
Lot Size:	0.03 AC	Parking:	Off Street Parking

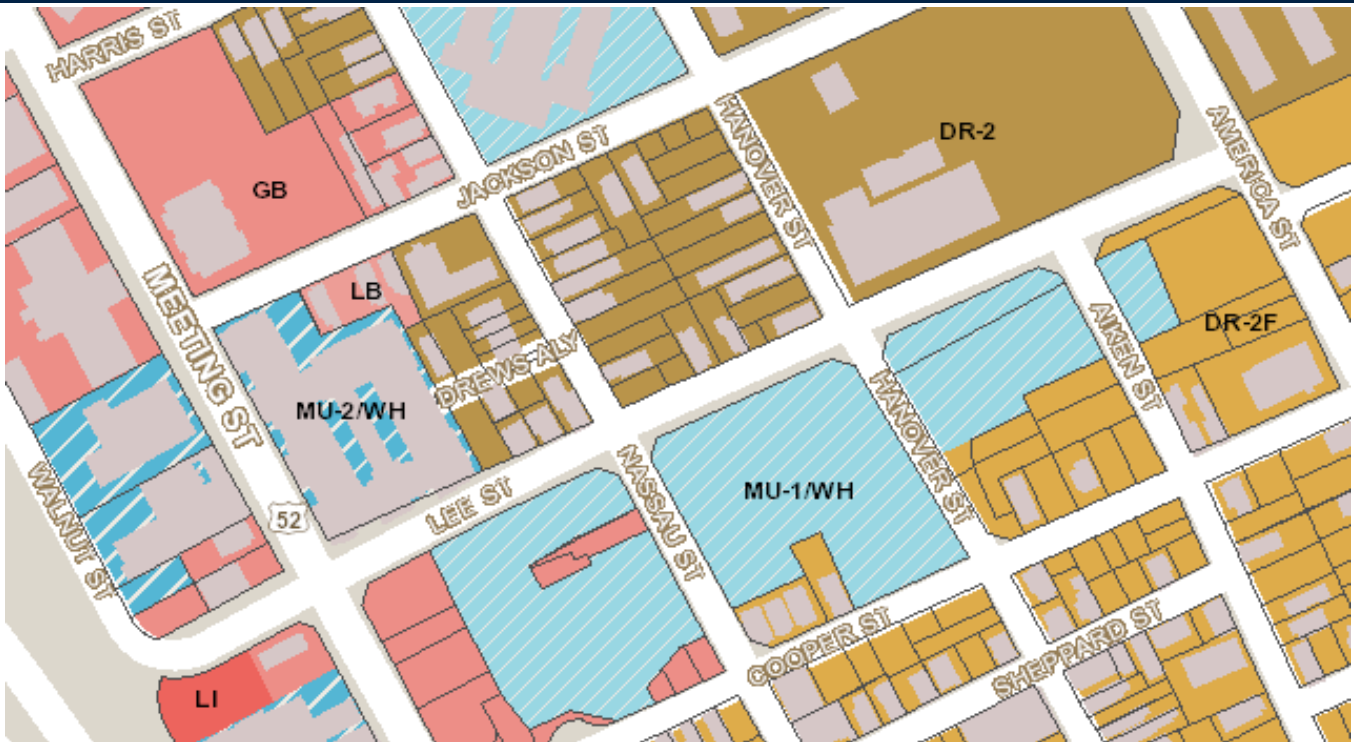






City of Charleston GIS Department

Zoning Map

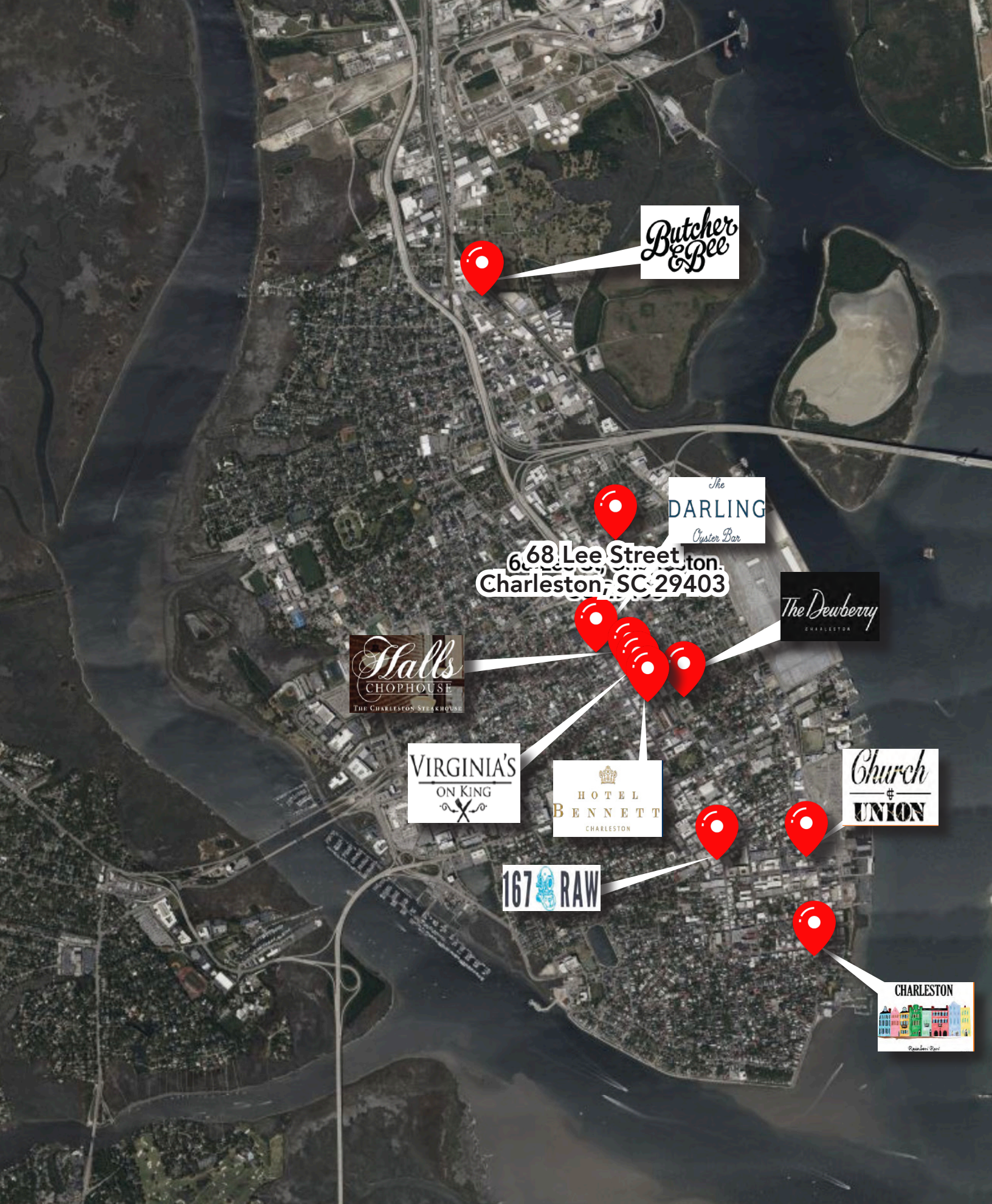


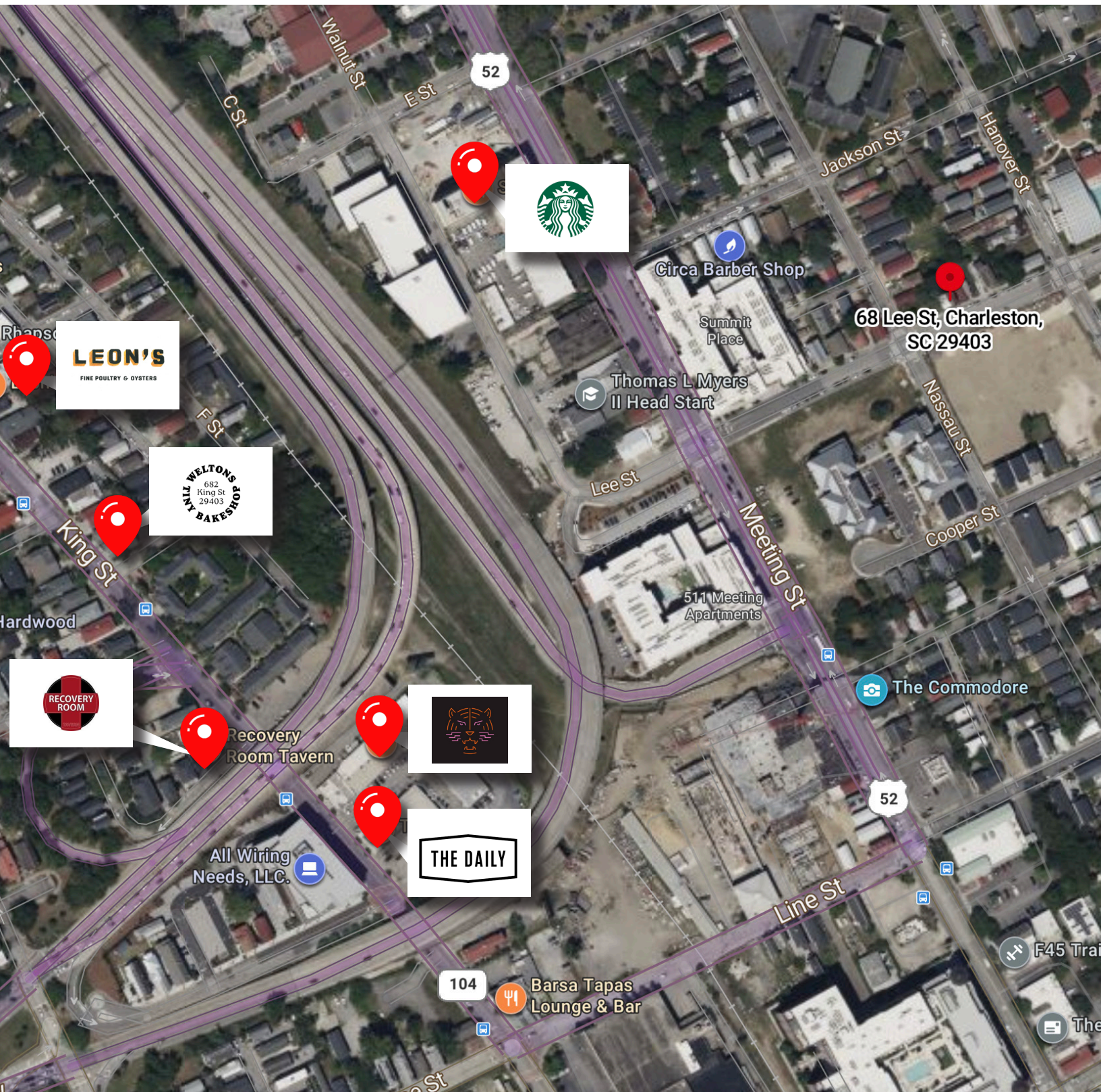
Important Disclaimer Notice

The City of Charleston makes no warranty, representation, or guaranty as to the content, sequence, accuracy, timeliness, or completeness of any information provided herein or derived from the mapping data for any reason. The City of Charleston explicitly disclaims any representations and warranties, including, without limitation, the implied warranties of merchantability and fitness for a particular purpose. The user knowingly waives any and all claims for damages against any and all of the entities comprising the City of Charleston that may arise from the mapping data.

Please contact the City of Charleston GIS department with any technical problems you may have.

Zoning assistance: Ernest Muhammad
email: muhammade@charleston-sc.gov
phone: [843-724-3750](tel:843-724-3750)







KRISTEN KRAUSE

Senior Broker

843.576.4031 (O)

310.699.2765 (D)

kkrause@cbcatlantic.com

3506 W Montague Ave Suite 200

North Charleston, SC 29418

843.744.9877

cbcatlantic.com | cbcretailatlantic.com



**COLDWELL BANKER
COMMERCIAL
ATLANTIC**

The information contained herein should be considered confidential and remains the sole property of Coldwell Banker Commercial Atlantic at all times. Although every effort has been made to ensure accuracy, no liability will be accepted for any errors or omissions. Disclosure of any information contained herein is prohibited except with the express written permission of Coldwell Banker Commercial Atlantic.