



**COLDWELL BANKER
COMMERCIAL**
DEVONSHIRE
REALTY

CORNER RETAIL LOT

\$159,000.00

FOR SALE



101 N. Gilbert St.,

Danville, IL 61832

1,200 SF

RETAIL/
OFFICE

SALE PRICE

\$159,000.00

LOT SIZE

0.29 Acres

ZONING

B-3 General Business

YEAR BUILT

1960

TAX PIN

23-08-112-041

PROPERTY DESCRIPTION

1,200 SF building was home to a former C-Store and auto dealership. Ideal location for a small retail shop, private office, or final land piece to a larger development.

AREA DESCRIPTION

Located on a signaled intersection with other anchors Carle Health, Big Lots, and Days Hotel.



LARRY KUCHEFSKI

Illinois/Indiana Licensed Designated Managing Broker

217-918-0871

lk@cbcdr.com



**COLDWELL BANKER COMMERCIAL
DEVONSHIRE REALTY**

201 W Springfield Ave. 11th Floor
Champaign, IL 61820
217-352-7712

©2023 Coldwell Banker. All Rights Reserved. Coldwell Banker Commercial® and the Coldwell Banker Commercial logos are trademarks of Coldwell Banker Real Estate LLC. The Coldwell Banker® System is comprised of company owned offices which are owned by a subsidiary of Anywhere Advisors LLC and franchised offices which are independently owned and operated. The Coldwell Banker System fully supports the principles of the Equal Opportunity Act.

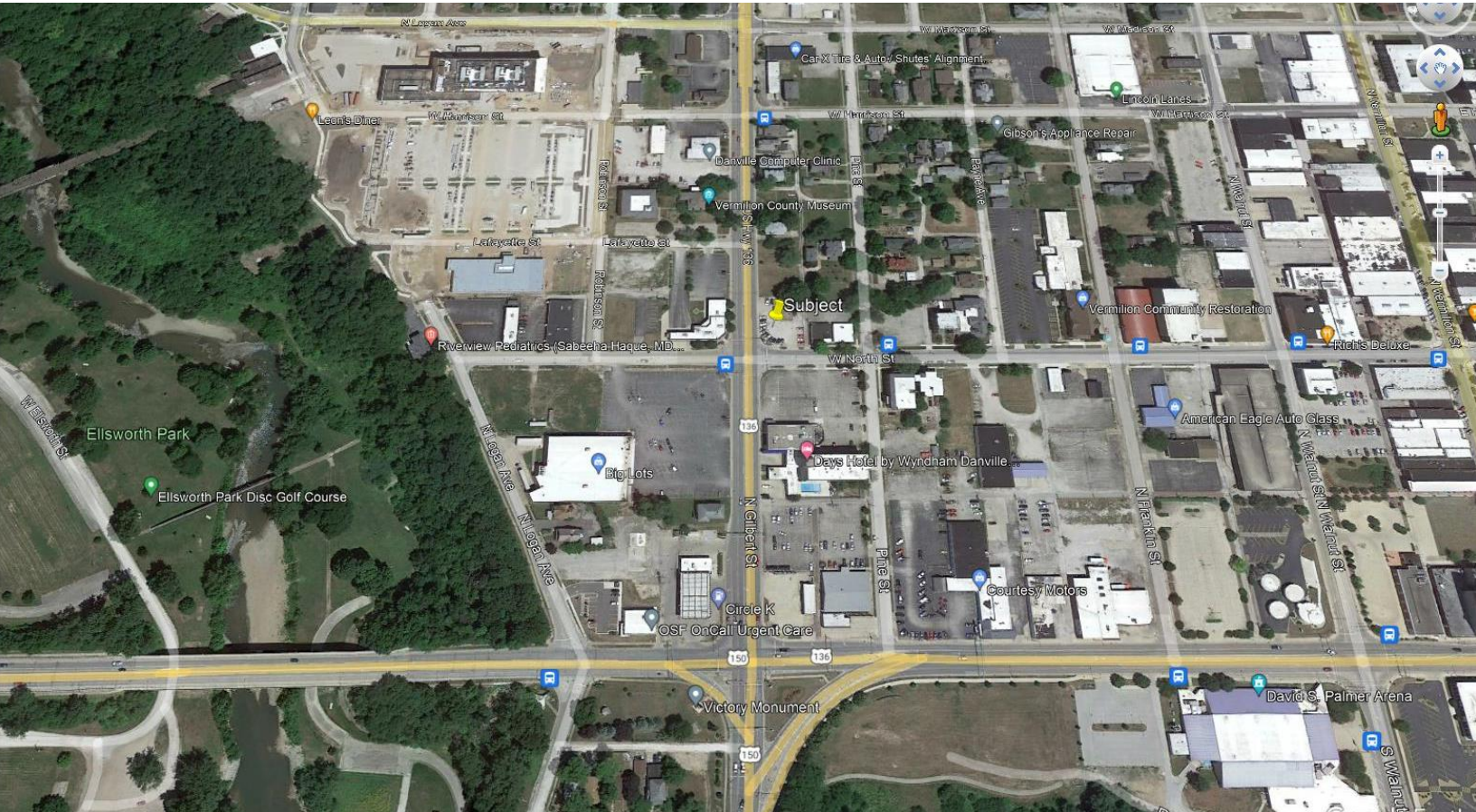


**COLDWELL BANKER
COMMERCIAL**
DEVONSHIRE
REALTY

CORNER RETAIL LOT
\$159,000.00

FOR SALE

AERIAL



LARRY KUCHEFSKI

Illinois/Indiana Licensed Designated Managing Broker

217-918-0871

lk@cbcdr.com



**COLDWELL BANKER COMMERCIAL
DEVONSHIRE REALTY**

201 W Springfield Ave. 11th Floor
Champaign, IL 61820
217-352-7712

©2023 Coldwell Banker. All Rights Reserved. Coldwell Banker Commercial® and the Coldwell Banker Commercial logos are trademarks of Coldwell Banker Real Estate LLC. The Coldwell Banker® System is comprised of company owned offices which are owned by a subsidiary of Anywhere Advisors LLC and franchised offices which are independently owned and operated. The Coldwell Banker System fully supports the principles of the Equal Opportunity Act.