



NEQ N QUAKER AVENUE & BLUEFIELD STREET

Lubbock, TX 79415

LAND



QUICK FACTS



PURCHASE PRICE

\$14,500 per Acre



TOTAL ACREAGE

125 AC



ZONING

County Land

CBCWORLDWIDE.COM

Beau Tucker, CCIM
806.470.3944
BTucker@CBCWorldwide.com
CBCLandMan.com

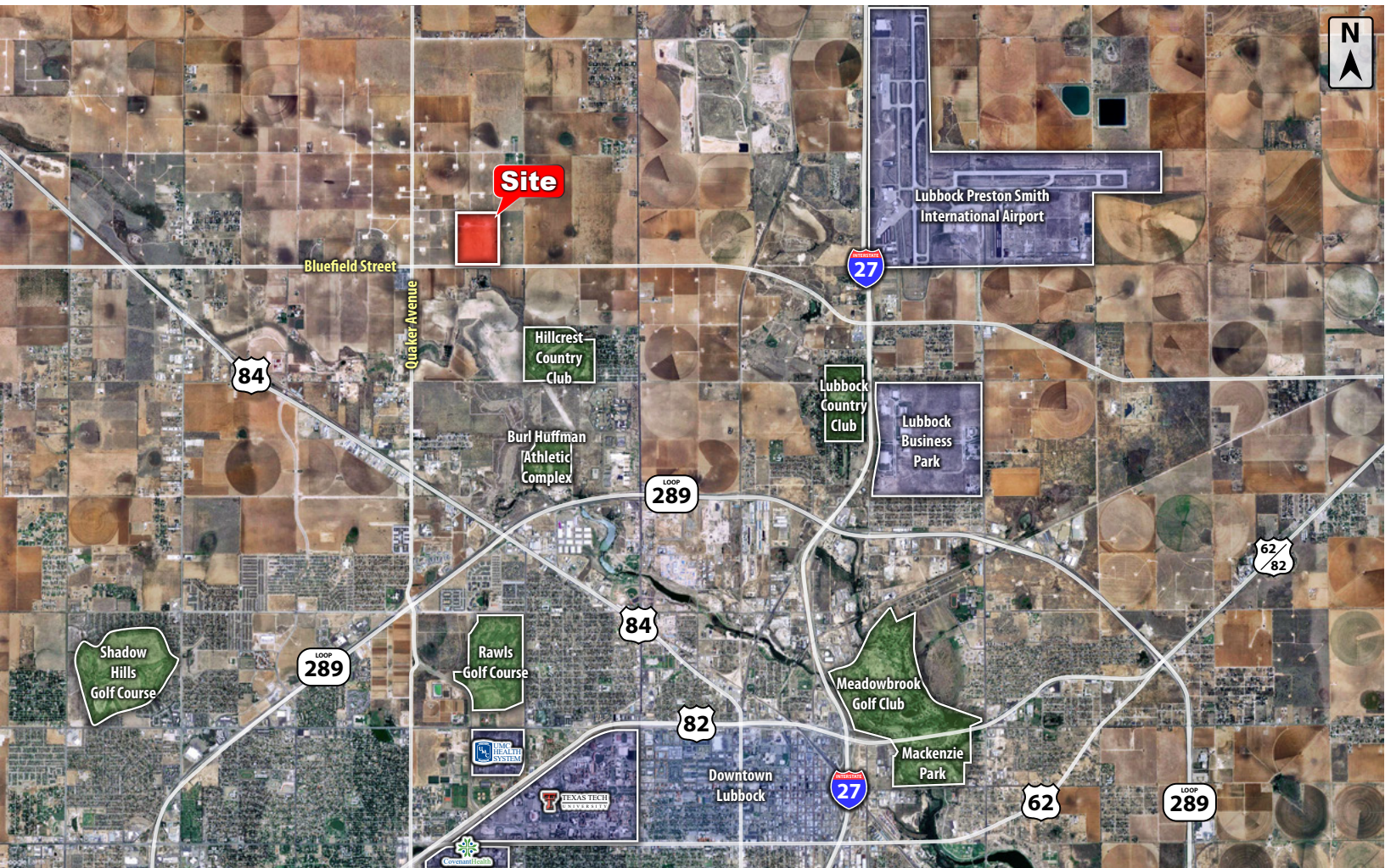


**COLDWELL
BANKER
COMMERCIAL**

CAPITAL ADVISORS



Trade Area & Information



LOCATION

Located in the northeast quadrant of N Quaker Avenue & Bluefield Street just north of the Lubbock, TX city limits.

DESCRIPTION

Large development tract gives a unique opportunity for the underserved north Lubbock market. The site has great accessibility and is ready for development. Texas Tech University, University Medical Center, & Covenant Health Systems and downtown Lubbock are only a 10-12 minute drive away.

The property is not in the floodplain.

PRICING

125.47 Acres - \$14,500 per Acres

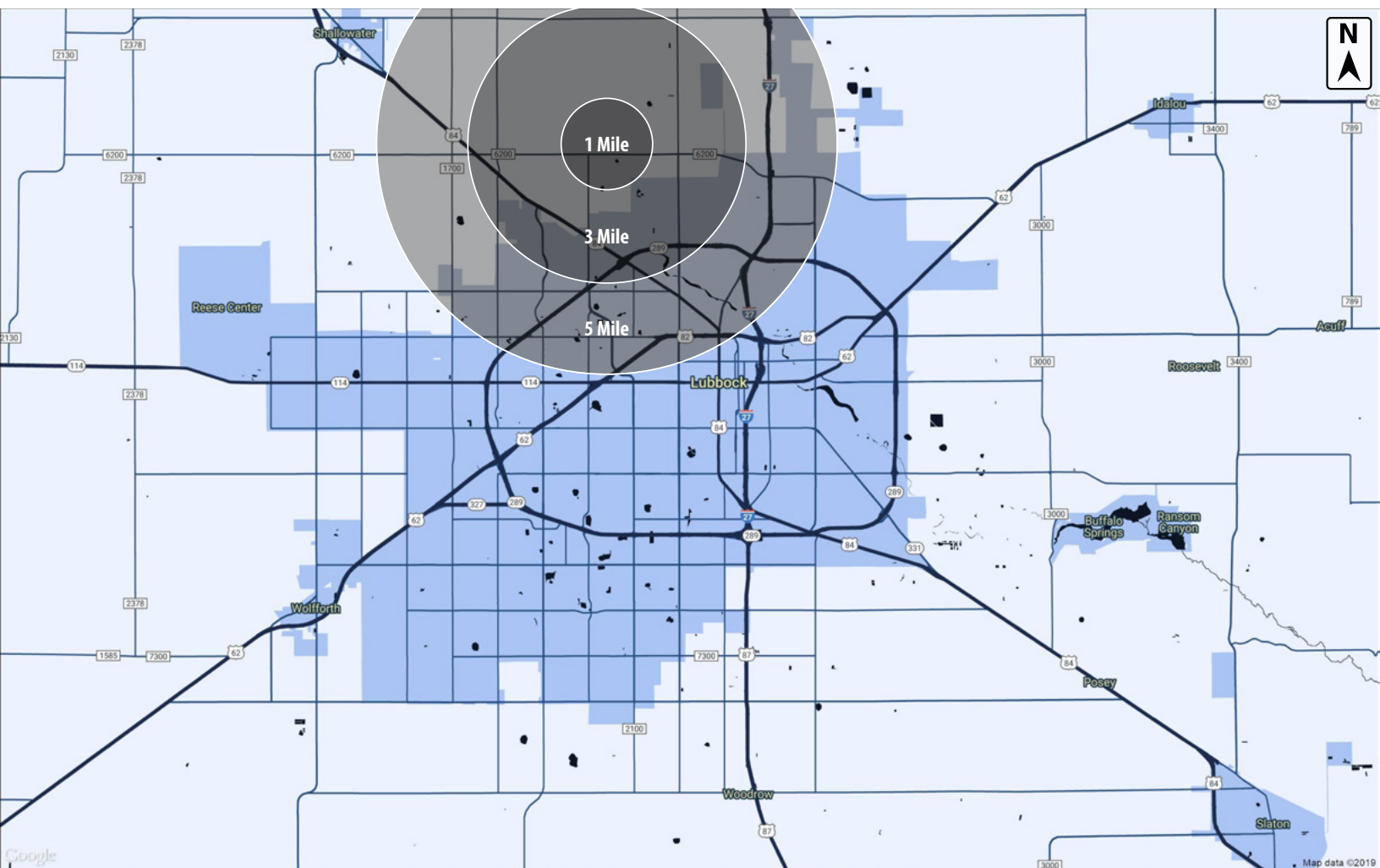


**COLDWELL
BANKER
COMMERCIAL**

CAPITAL ADVISORS



Demographics



POPULATION

TOTAL POPULATION
MEDIAN AGE
MEDIAN AGE (MALE)
MEDIAN AGE (FEMALE)

3 MILES

8,134
29.1
28.5
29.6

5 MILES

52,172
28.7
27.5
30.3

HOUSEHOLDS & INCOME

TOTAL HOUSEHOLDS
OF PERSONS PER HH
AVERAGE HH INCOME
AVERAGE HOUSE VALUE

3 MILES

2,986
2.6
\$60,675
\$134,463

5 MILES

18,868
2.4
\$63,493
\$141,666

CBCWORLDWIDE.COM

Beau Tucker, CCIM
806.470.3944
BTucker@CBCWorldwide.com
CBCLandMan.com

©2020 Coldwell Banker Real Estate LLC, dba Coldwell Banker Commercial Capital Advisors. All rights reserved. Coldwell Banker Commercial® and the Coldwell Banker Commercial are registered service marks owned by Coldwell Banker Real Estate LLC. Coldwell Banker Real Estate LLC, dba Coldwell Banker Commercial, fully supports the principles of the Fair Housing Act and the Equal Opportunity Act. Each office is independently owned and operated. The information provided is deemed reliable, but it is not guaranteed to be accurate or complete, and it should not be relied upon as such. This information should be independently verified before any person enters into a transaction based upon it.



**COLDWELL
BANKER
COMMERCIAL**

CAPITAL ADVISORS