

SALE

801 W ROCKTON RD
801 W Rockton Rd Rockton, IL 61072



OFFERING SUMMARY

Lot Size:	30.8 Acres
Building Size:	109,950 SF
Property Type	Office/R&D/Industrial
Parking	300
Zoning:	IL (Light Industrial)

PROPERTY DESCRIPTION

Industrial R&D & technology building on a 30.8-acre campus. Property is secured with wrought iron fencing and a security gate. It also has two outbuildings, ample employee parking, and trailer storage area. The tech center is on two levels, with office, a full cafeteria with a commercial-grade kitchen, an engineering space on the first level, and labs on the lower level. All served by two freight elevators. Both levels have private and open-plan offices.

DEMOGRAPHICS

	10 MILES	15 MILES	20 MILES
Total Households	57,636	140,095	202,908
Total Population	140,390	324,916	470,639
Average HH Income	\$72,584	\$68,060	\$68,199

PROPERTY HIGHLIGHTS

- Secure site with guard house at main entrance
- 300 parking spaces/lighted lot
- Doors: two (2) 10' docks & six (6) drive-in
- Multiple conference rooms, private offices & open plan space
- Full cafeteria & industrial-grade kitchen
- Two (2) freight elevators
- Six miles from I-90

Bill Mears
Managing Broker
O: 608 314 8251 | C: 608 359 3031
bill@mcguiremears.com

Adam Shultz
Broker
O: 608 314 8257 | C: 608 201 4794
adam@mcguiremears.com

Joe Messina
O: 216 387 2091
Joe.Messina@jll.com



COLDWELL BANKER
COMMERCIAL
MCGUIRE MEARS
& ASSOCIATES



SALE

801 W ROCKTON RD

801 W Rockton Rd Rockton, IL 61072



LOCATION INFORMATION

Street Address	801 W Rockton Rd
City, State, Zip	Rockton, IL 61072
County	Winnebago

BUILDING INFORMATION

Building Class	B
Ceiling Height	12 ft
Year Built	1977

PROPERTY HIGHLIGHTS

- Secure site with guard house at main entrance
- 300 parking spaces/lighted lot
- Doors: two (2) 10' docks & six (6) drive-in
- Multiple conference rooms, private offices & open plan space
- Full cafeteria & industrial-grade kitchen
- Two (2) freight elevators
- Six miles from I-90



Bill Mears
Managing Broker
O: 608 314 8251 | C: 608 359 3031
bill@mcguiremears.com

Adam Shultz
Broker
O: 608 314 8257 | C: 608 201 4794
adam@mcguiremears.com

Joe Messina
O: 216 387 2091
Joe.Messina@jll.com



COLDWELL BANKER
COMMERCIAL
MCGUIRE MEARS
& ASSOCIATES



SALE

801 W ROCKTON RD
801 W Rockton Rd Rockton, IL 61072



Bill Mears
Managing Broker
O: 608 314 8251 | C: 608 359 3031
bill@mcguiremears.com

Adam Shultz
Broker
O: 608 314 8257 | C: 608 201 4794
adam@mcguiremears.com

Joe Messina
O: 216 387 2091
Joe.Messina@jll.com



COLDWELL BANKER
COMMERCIAL
MCGUIRE MEARS
& ASSOCIATES



SALE

801 W ROCKTON RD
801 W Rockton Rd Rockton, IL 61072



Bill Mears
Managing Broker
O: 608 314 8251 | C: 608 359 3031
bill@mcguiremears.com

Adam Shultz
Broker
O: 608 314 8257 | C: 608 201 4794
adam@mcguiremears.com

Joe Messina
O: 216 387 2091
Joe.Messina@jll.com

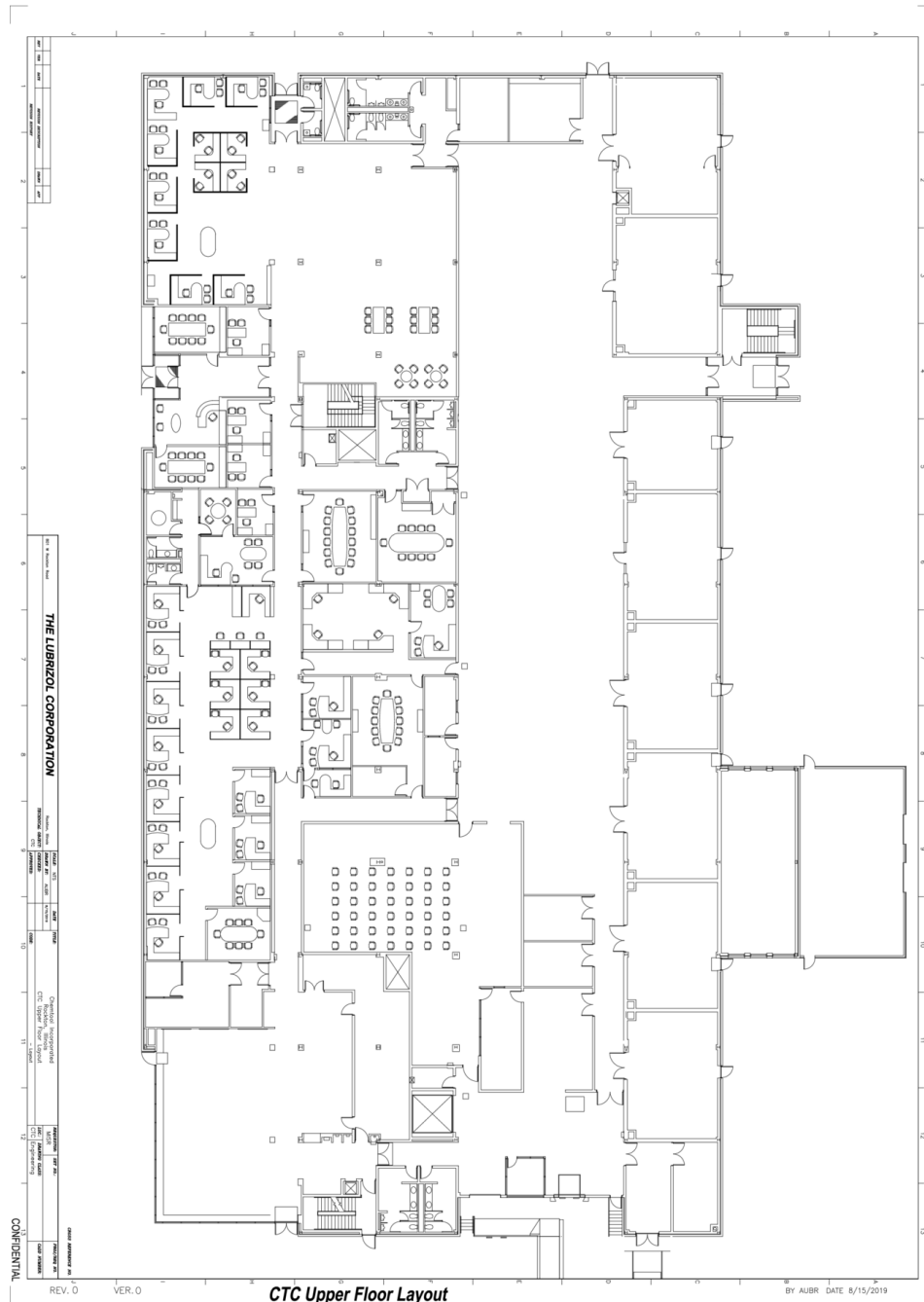


COLDWELL BANKER
COMMERCIAL
MCGUIRE MEARS
& ASSOCIATES



SALE

801 W ROCKTON RD
801 W Rockton Rd Rockton, IL 61072



Bill Mears
Managing Broker
O: 608 314 8251 | C: 608 359 3031
bill@mcguiremears.com

Adam Shultz
Broker
O: 608 314 8257 | C: 608 201 4794
adam@mcguiremears.com

Joe Messina
O: 216 387 2091
Joe.Messina@jll.com

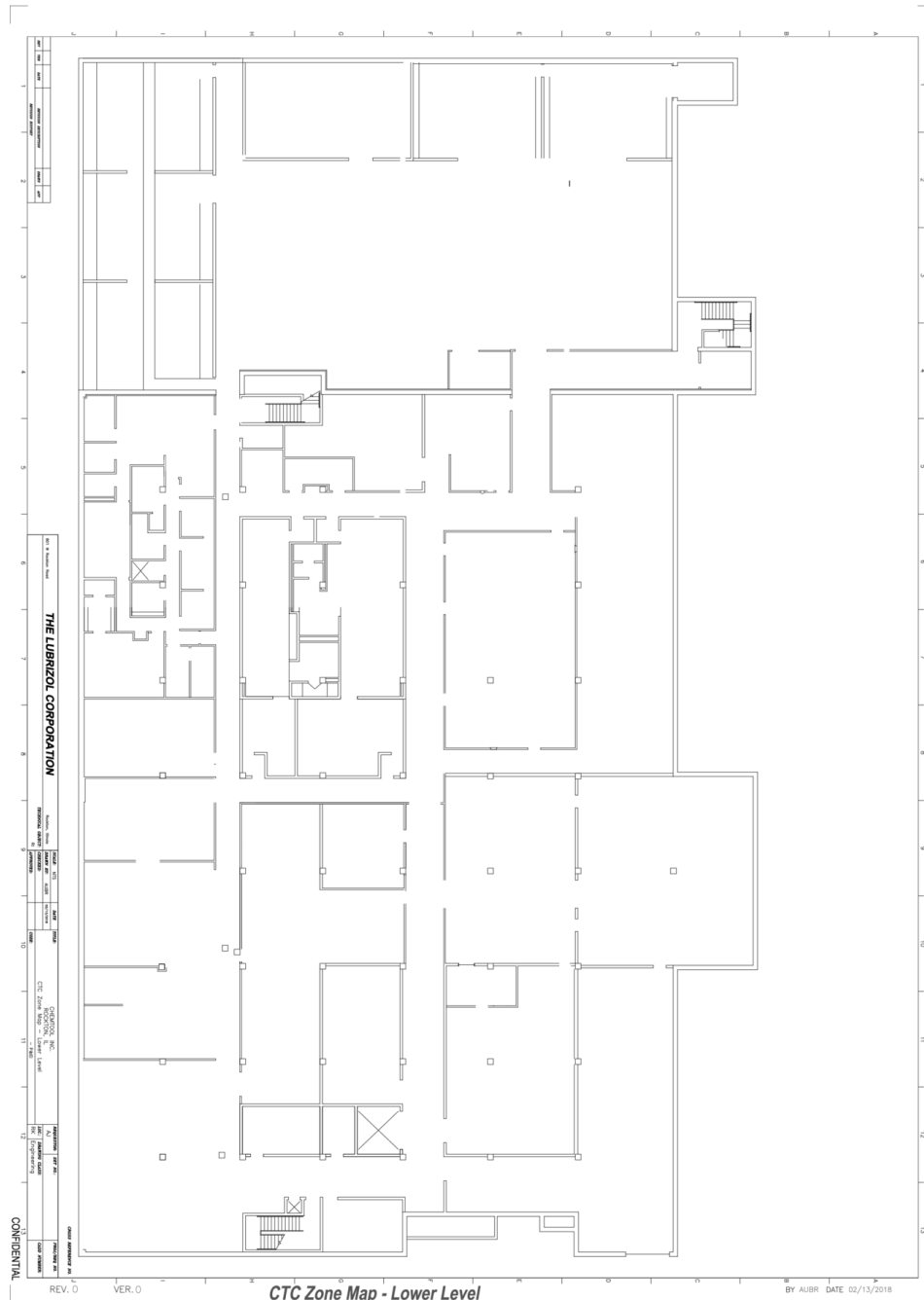


**COLDWELL BANKER
COMMERCIAL**
MCGUIRE MEARS
& ASSOCIATES



SALE

801 W ROCKTON RD
801 W Rockton Rd Rockton, IL 61072



Bill Mears
Managing Broker
O: 608 314 8251 | C: 608 359 3031
bill@mcguiremears.com

Adam Shultz
Broker
O: 608 314 8257 | C: 608 201 4794
adam@mcguiremears.com

Joe Messina
O: 216 387 2091
Joe.Messina@jll.com

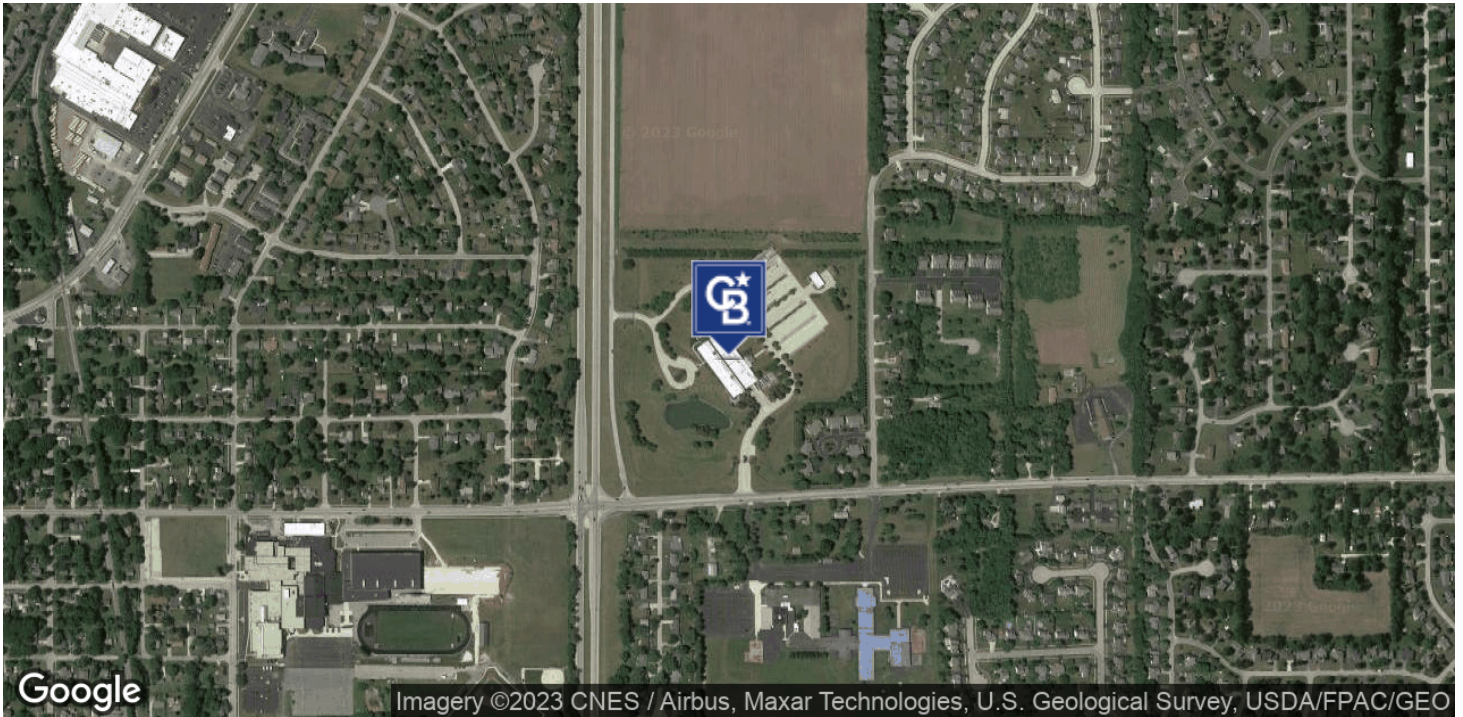


**COLDWELL BANKER
COMMERCIAL**
MCGUIRE MEARS
& ASSOCIATES



SALE

801 W ROCKTON RD
801 W Rockton Rd Rockton, IL 61072



Bill Mears
Managing Broker
O: 608 314 8251 | C: 608 359 3031
bill@mcguiremears.com

Adam Shultz
Broker
O: 608 314 8257 | C: 608 201 4794
adam@mcguiremears.com

Joe Messina
O: 216 387 2091
Joe.Messina@jll.com



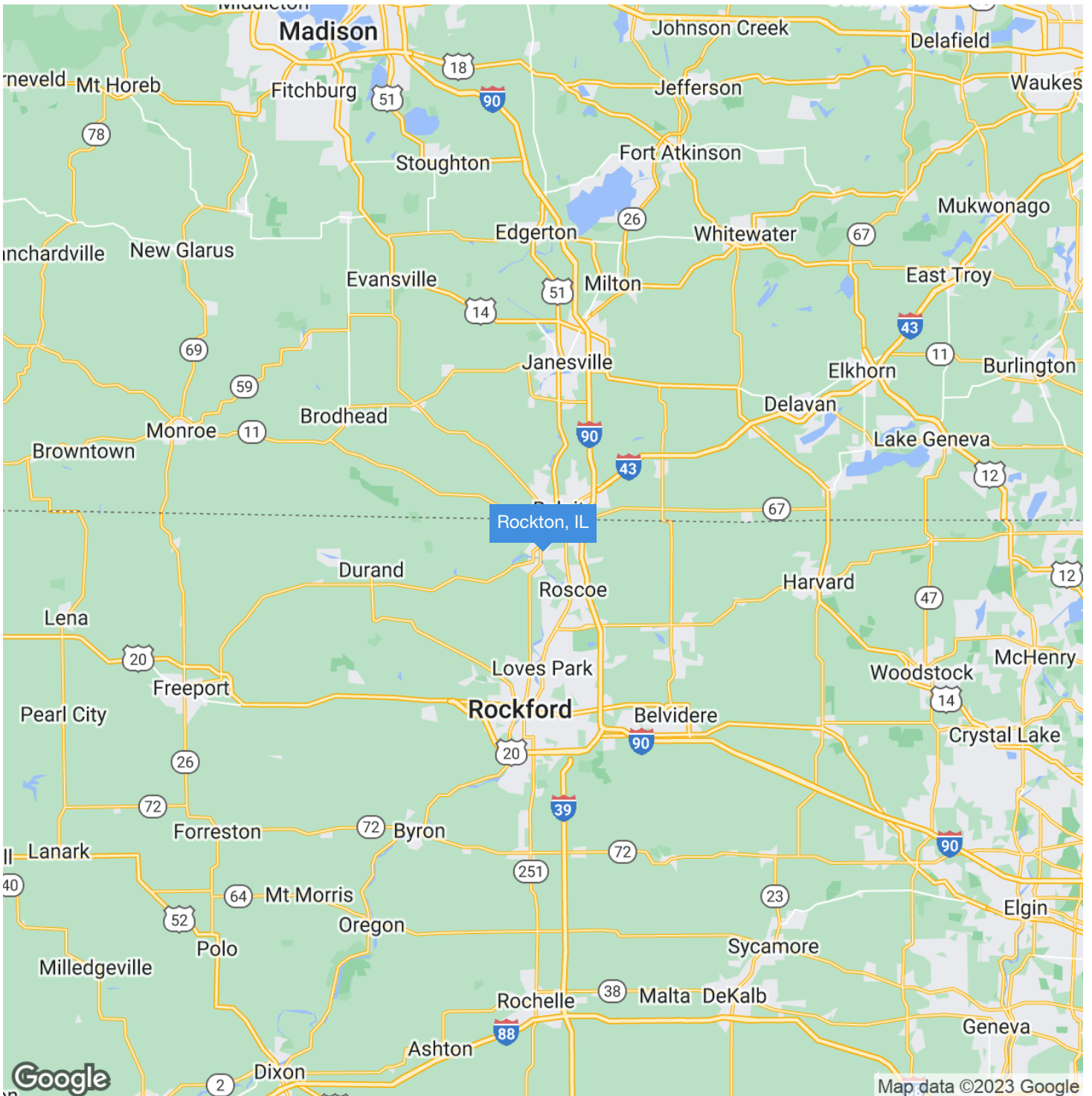
COLDWELL BANKER
COMMERCIAL
MCGUIRE MEARS
& ASSOCIATES



SALE

801 W ROCKTON RD

801 W Rockton Rd Rockton, IL 61072



Bill Mears
Managing Broker
O: 608 314 8251 | C: 608 359 3031
bill@mcguiremears.com

Adam Shultz
Broker
O: 608 314 8257 | C: 608 201 4794
adam@mcguiremears.com

Joe Messina
O: 216 387 2091
Joe.Messina@jll.com



**COLDWELL BANKER
COMMERCIAL**
MCGUIRE MEARS
& ASSOCIATES



STATE OF WISCONSIN

BROKER DISCLOSURE TO NON-RESIDENTIAL CUSTOMERS

Wisconsin law requires all real estate licensees to give the following information about brokerage services to prospective customers.

Prior to negotiating on your behalf the brokerage firm, or an agent associated with the firm, must provide you the following disclosure statement:

BROKER DISCLOSURE TO CUSTOMERS

You are the customer of the brokerage firm (hereinafter Firm). The Firm is either an agent of another party in the transaction or a subagent of another firm that is the agent of another party in the transaction. A broker or a salesperson acting on the behalf of the Firm may provide brokerage services to you. Whenever the Firm is providing brokerage services to you, the Firm and its brokers and salespersons (hereinafter Agents) owe you, the customer, the following duties:

- The duty to provide brokerage services to you fairly and honestly.
- The duty to exercise reasonable skill and care in providing brokerage services to you.
- The duty to provide you with accurate information about market conditions within a reasonable time if you request it, unless disclosure of the information is prohibited by law.
- The duty to disclose to you in writing certain Material Adverse Facts about a property, unless disclosure of the information is prohibited by law (see "Definition of Material Adverse Facts" below).
- The duty to protect your confidentiality. Unless the law requires it, the Firm and its Agents will not disclose your confidential information or the confidential information of other parties (see "Confidentiality Notice to Customers" below).
- The duty to safeguard trust funds and other property held by the Firm or its Agents.
- The duty, when negotiating, to present contract proposals in an objective and unbiased manner and disclose the advantages and disadvantages of the proposals.

Please review this information carefully. An Agent of the Firm can answer your questions about brokerage services, but if you need legal advice, tax advice, or a professional home inspection, contact an attorney, tax advisor, or home inspector.

This disclosure is required by section 452.135 of the Wisconsin statutes and is for information only. It is a plain-language summary of a broker's duties to a customer under section 452.133(1) of the Wisconsin statutes.

CONFIDENTIALITY NOTICE TO CUSTOMERS

The Firm and its Agents will keep confidential any information given to the Firm and its Agents in confidence, or any information obtained by the Firm and its Agents that a reasonable person would want to be kept confidential, unless the information must be disclosed by law or you authorize the Firm to disclose particular information. The Firm and its Agents shall continue to keep the information confidential after the Firm is no longer providing brokerage services to you.

The following information is required to be disclosed by law.

1. Material Adverse Facts, as defined in Wis. Stat. § 452.01(5g) (see "Definition of Material Adverse Facts" below).
2. Any facts known by the Firm or its Agents that contradict any information included in a written inspection report

on the property or real estate that is the subject of the transaction.

To ensure that the Firm and its Agents are aware of what specific information you consider confidential, you may list that information below or provide that information to the Firm or its Agents by other means. At a later time, you may also provide the Firm or its Agents with other information you consider to be confidential.

CONFIDENTIAL INFORMATION: _____

NON-CONFIDENTIAL INFORMATION (The following information may be disclosed by the Firm and its Agents): _____

(Insert information you authorize to be disclosed, such as financial qualification information.)

DEFINITION OF MATERIAL ADVERSE FACTS

A "Material Adverse Fact" is defined in Wis. Stat. § 452.01(5g) as an Adverse Fact that a party indicates is of such significance, or that is generally recognized by a competent licensee as being of such significance to a reasonable party, that it affects or would affect the party's decision to enter into a contract or agreement concerning a transaction or affects or would affect the party's decision about the terms of such a contract or agreement.

An "Adverse Fact" is defined in Wis. Stat. § 452.01(1e) as a condition or occurrence that a competent licensee generally recognizes will significantly and adversely affect the value of the property, significantly reduce the structural integrity of improvements to real estate, or present a significant health risk to occupants of the property; or information that indicates that a party to a transaction is not able to or does not intend to meet his or her obligations under a contract or agreement made concerning the transaction.

NOTICE ABOUT SEX OFFENDER REGISTRY

You may obtain information about the sex offender registry and persons registered with the registry by contacting the Wisconsin Department of Corrections on the internet at <http://www.doc.wi.gov> or by telephone at 608-240-5830.

No representation is made as to the legal validity of any provision or the adequacy of any provision on any specific transaction.



**COLDWELL BANKER
COMMERCIAL**
**MCGUIRE MEARS &
ASSOCIATES**