

LEASE

PACIFIC/BURWELL BUILDING

301 Pacific Ave Bremerton, WA 98337



OFFERING SUMMARY

| | |
|---------------|---------------------|
| Lease Rate: | \$16.00 SF/yr (NNN) |
| NNN Expenses: | \$3.26 per SF |
| Suite: | Suite 301 |
| Available SF: | 3,878 SF |
| Lot Size: | 0.29 Acres |
| Year Built: | 1974 |
| Zoning: | DC |

PROPERTY OVERVIEW

Please contact the agent for more information about this listing.

PROPERTY HIGHLIGHTS

- Best Retail Corner in Downtown Bremerton
- Tons of walking traffic & lunchtime crowds spilling out from the PSNSY
- Open Floorplan Allows For A Wide Variety Of Uses

Cameron Wilson, CCIM

702 604 4119

cameron.wilson@cbcworldwide.com

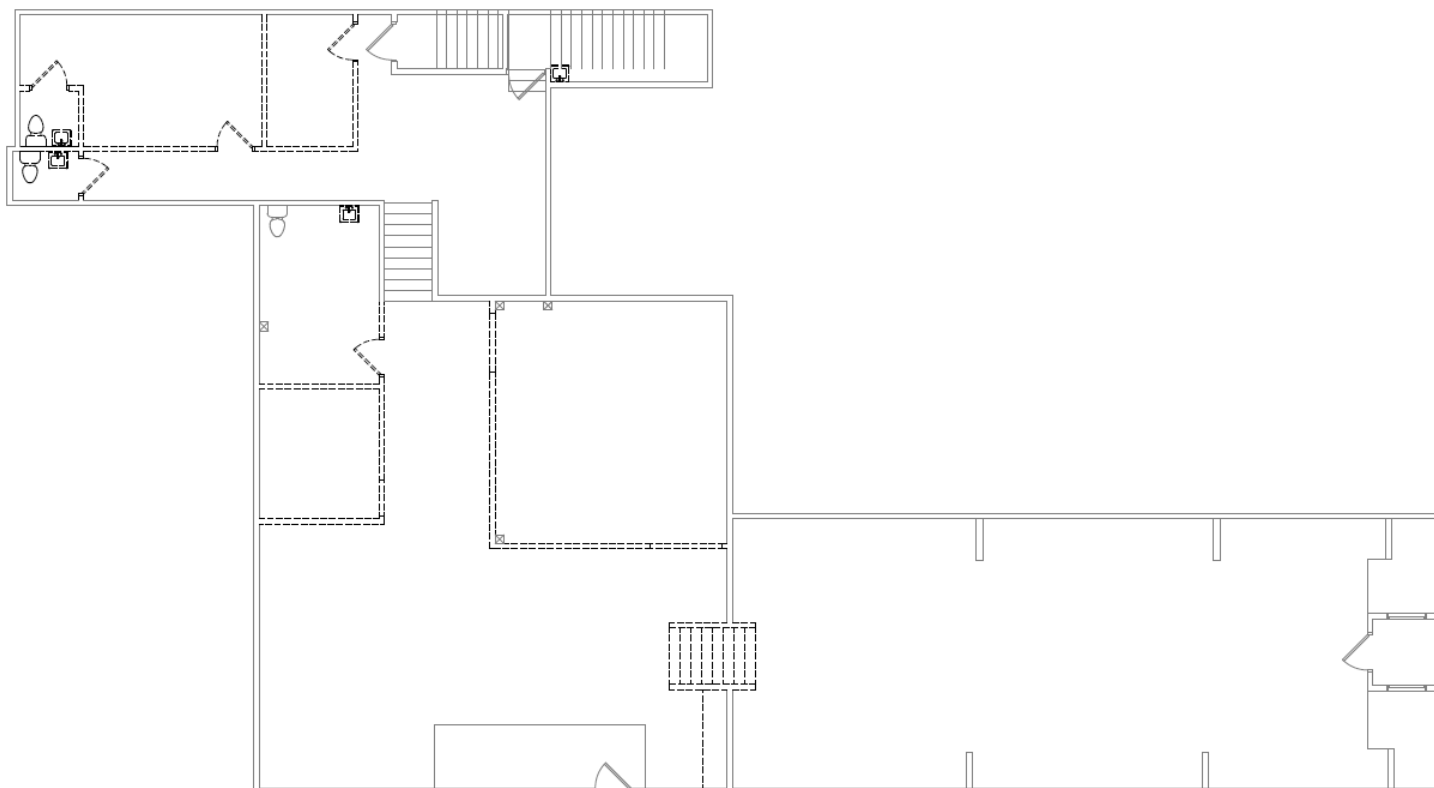


**COLDWELL BANKER
COMMERCIAL
DANFORTH**

LEASE

PACIFIC/BURWELL BUILDING

301 Pacific Ave Bremerton, WA 98337



Cameron Wilson, CCIM

702 604 4119

cameron.wilson@cbcworldwide.com

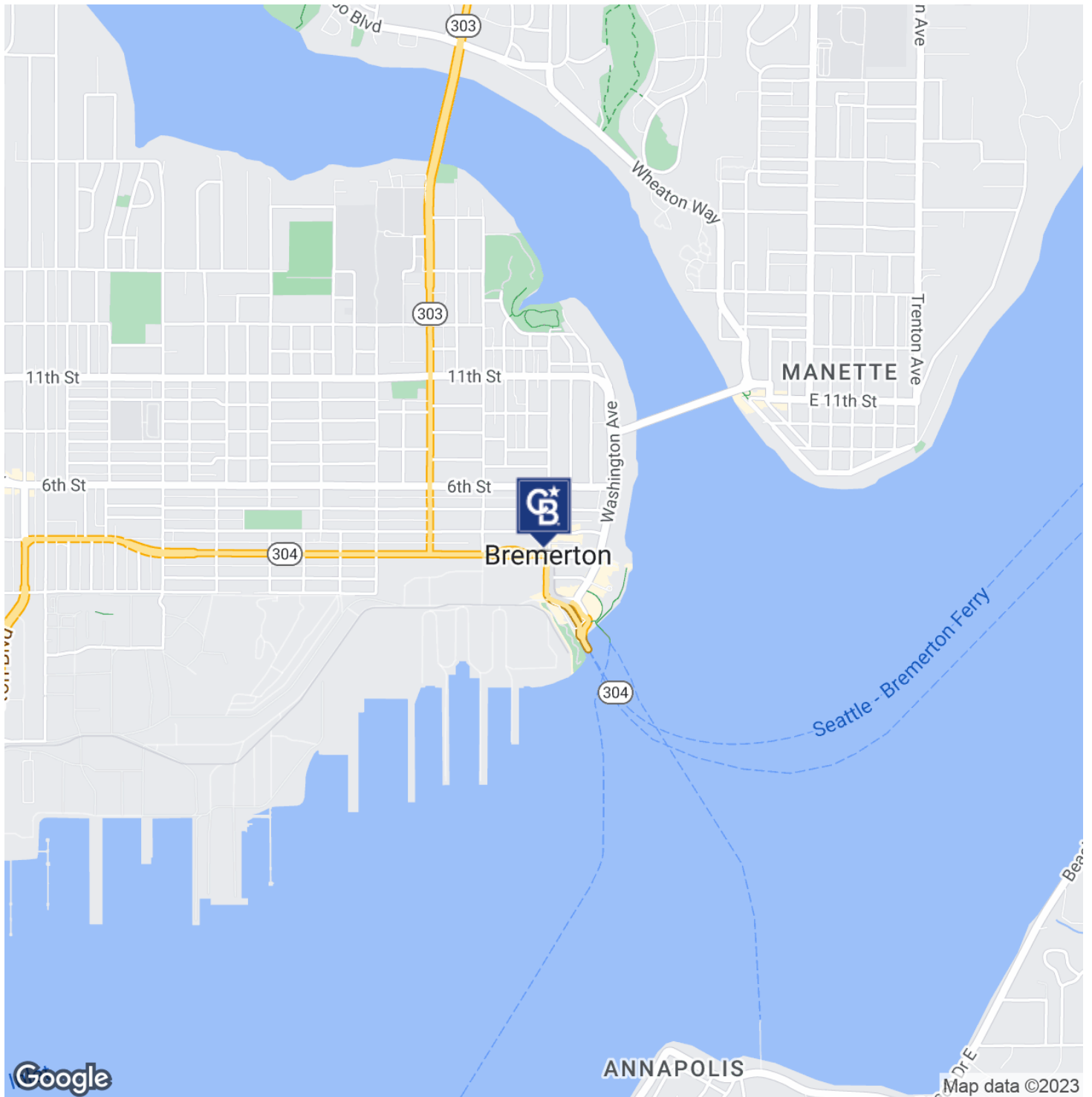


**COLDWELL BANKER
COMMERCIAL
DANFORTH**

LEASE

PACIFIC/BURWELL BUILDING

301 Pacific Ave Bremerton, WA 98337



Cameron Wilson, CCIM

702 604 4119

cameron.wilson@cbcworldwide.com



**COLDWELL BANKER
COMMERCIAL
DANFORTH**

LEASE

PACIFIC/BURWELL BUILDING

301 Pacific Ave Bremerton, WA 98337



POPULATION

| | 1 MILE | 5 MILES | 10 MILES |
|----------------------|--------|---------|----------|
| Total Population | 10,766 | 115,198 | 212,681 |
| Average Age | 32.9 | 37.1 | 39.9 |
| Average Age (Male) | 32.2 | 35.7 | 38.6 |
| Average Age (Female) | 33.5 | 38.8 | 41 |

HOUSEHOLDS & INCOME

| | 1 MILE | 5 MILES | 10 MILES |
|---------------------|-----------|-----------|-----------|
| Total Households | 4,675 | 48,759 | 89,064 |
| # of Persons per HH | 2.3 | 2.4 | 2.4 |
| Average HH Income | \$64,887 | \$77,182 | \$92,063 |
| Average House Value | \$279,511 | \$319,161 | \$384,378 |

* Demographic data derived from 2020 ACS - US Census

Cameron Wilson, CCIM
702 604 4119
cameron.wilson@cbcworldwide.com



**COLDWELL BANKER
COMMERCIAL
DANFORTH**