

FOR LEASE THE DEPOT



112-142 S. Riverfront Drive Mankato, MN 56001

PROPERTY OVERVIEW

Located at the corner of Main Street and Riverfront Drive in the heart of Mankato's City Center, this historic train depot along the Minnesota River has been converted into a very nice office building. There is one space available on the main level with two separate offices. This is a great location with plenty of parking, high traffic counts and great roadside visibility along Riverfront Drive! Call today for additional information or to schedule a showing!

DETAILS

BLDG SIZE:	8,967.35 SQ FT
AVAILABLE:	699.28 SQ FT
LEASE PRICE:	\$9.00 SQ FT
LEASE TYPE:	Triple Net
CAM:	\$8.87 SQ FT
ZONING:	CBD

FOR MORE INFORMATION CONTACT:

David Schooff SIOR, CCIM
david.schooff@cbcfishergroup.com

Direct (507) 625-0985
Cell (507) 382-2403

CBCFISHERGROUP.COM

Coldwell Banker Commercial and the Coldwell Banker Commercial Logo are registered service marks licensed to Coldwell Banker Commercial Affiliates. Each Office is Independently Owned and Operated. All information contained herein has been obtained from sources deemed reliable. However, no warranty or guarantee is made as to the accuracy of the information.

Coldwell Banker Commercial
Fisher Group
1961 Premier Drive
Suite 404
Mankato, MN 56001

FOR LEASE THE DEPOT



FOR MORE INFORMATION CONTACT:

David Schooff SIOR, CCIM
david.schooff@cbcfishergroup.com

Direct
 Cell

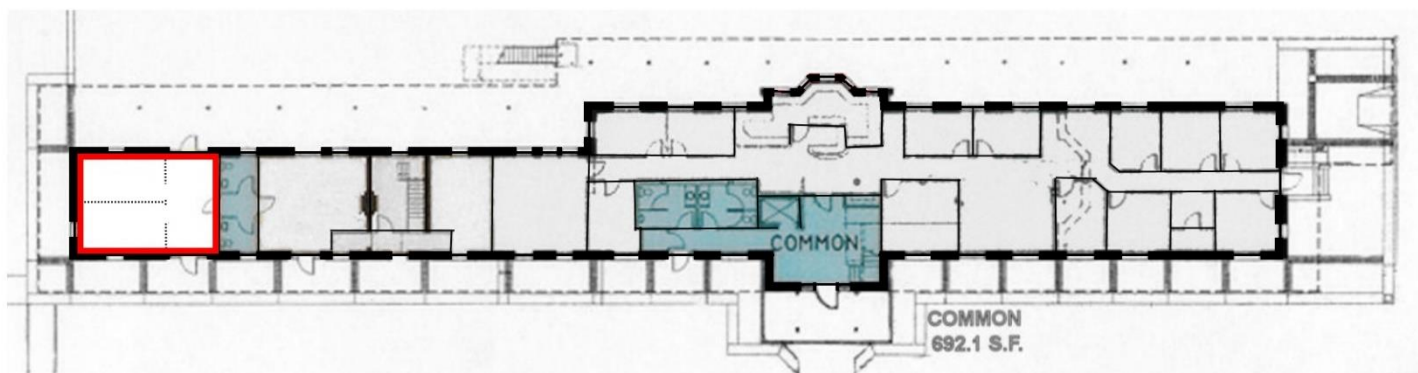
(507) 625-0985
 (507) 382-2403

CBCFISHERGROUP.COM

Coldwell Banker Commercial and the Coldwell Banker Commercial Logo are registered service marks licensed to Coldwell Banker Commercial Affiliates. Each Office is Independently Owned and Operated. All information contained herein has been obtained from sources deemed reliable. However, no warranty or guarantee is made as to the accuracy of the information.

Coldwell Banker Commercial
 Fisher Group
 1961 Premier Drive
 Suite 404
 Mankato, MN 56001

FOR LEASE THE DEPOT



Riverfront Drive

FOR MORE INFORMATION CONTACT:

David Schooff SIOR, CCIM
david.schooff@cbcfishergroup.com

Direct (507) 625-0985
Cell (507) 382-2403

CBCFISHERGROUP.COM

Coldwell Banker Commercial and the Coldwell Banker Commercial Logo are registered service marks licensed to Coldwell Banker Commercial Affiliates. Each Office is Independently Owned and Operated. All information contained herein has been obtained from sources deemed reliable. However, no warranty or guarantee is made as to the accuracy of the information.

Coldwell Banker Commercial
Fisher Group
1961 Premier Drive
Suite 404
Mankato, MN 56001

FOR LEASE THE DEPOT



FOR MORE INFORMATION CONTACT:

David Schooff SIOR, CCIM
david.schooff@cbcfishergroup.com

Direct (507) 625-0985
 Cell (507) 382-2403

CBCFISHERGROUP.COM

Coldwell Banker Commercial and the Coldwell Banker Commercial Logo are registered service marks licensed to Coldwell Banker Commercial Affiliates. Each Office is Independently Owned and Operated. All information contained herein has been obtained from sources deemed reliable. However, no warranty or guarantee is made as to the accuracy of the information.

Coldwell Banker Commercial
 Fisher Group
 1961 Premier Drive
 Suite 404
 Mankato, MN 56001