

SALE

830 UNIVERSITY AVENUE

Honolulu, HI 96826



PROPERTY DESCRIPTION

Well-maintained, hollow tile, 8 - 1 bedroom multifamily with established tenant base. Conveniently located in Moiliili and in close proximity to UH, shopping options and bus line. Quick freeway access in both directions. All units separately metered for electricity. Landlord pays common electric, water and gas. Washers owned by tenants. 5 on site parking stalls.

PROPERTY HIGHLIGHTS

- In close proximity to the University of Hawaii, Manoa
- Located along bus line
- Close to freeway access in both directions

OFFERING SUMMARY

Sale Price:	\$2,300,000
Number of Units:	8
Lot Size:	5,136 SF
Building Size:	3,744 SF
Proforma NOI:	\$105,291.95
Proforma Cap Rate:	4.58%
Zoning:	A-2
APN:	1-2-7-016-050

DEMOGRAPHICS	0.25 MILES	0.5 MILES	1 MILE
Total Households	3,494	10,579	35,822
Total Population	6,597	21,970	61,552
Average HH Income	\$65,303	\$67,491	\$61,962

Darrin Araki (RA, CCIM)
808 348 1613

Jordan P. Chow (PB, CCIM, CNE)
808 392 1906

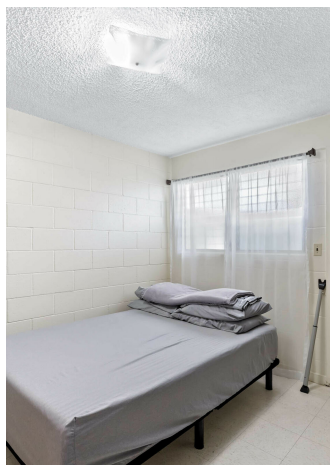
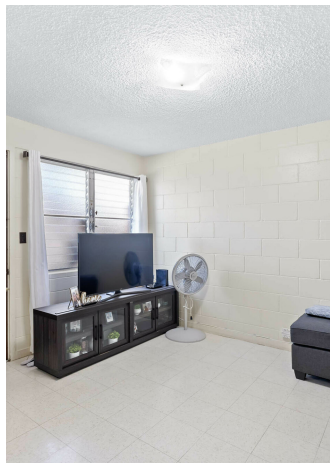


**COLDWELL BANKER
COMMERCIAL**
REALTY

SALE

830 UNIVERSITY AVENUE

Honolulu, HI 96826



Darrin Araki (RA, CCIM)
808 348 1613

Jordan P. Chow (PB, CCIM, CNE)
808 392 1906



**COLDWELL BANKER
COMMERCIAL
REALTY**