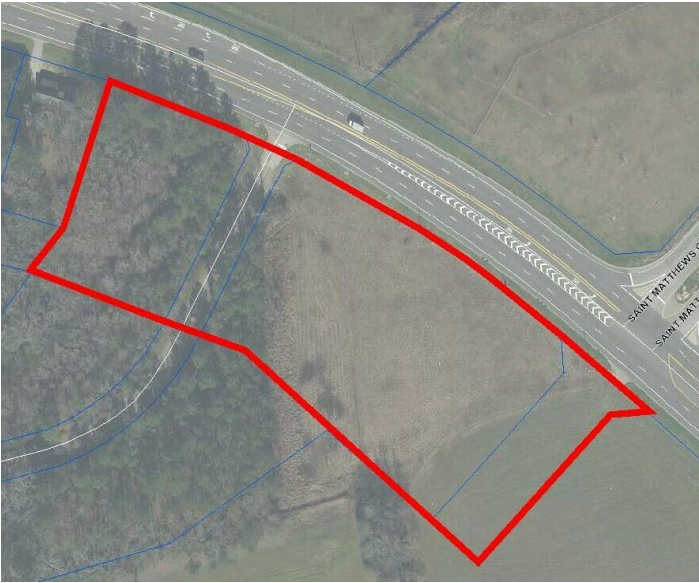


SALE

HIGHWAY 521 SOUTH AND WAYCROSS CIRCLE

Highway 521 South and Waycross Circle, Sumter, SC 29153



OFFERING SUMMARY

Sale Price:	\$495,000
Available SF:	+/- 191,228
Lot Size:	+/- 4.39 Acres
Zoning:	General Commercial
Traffic Count:	8,200

PROPERTY OVERVIEW

Property located on Highway 521 South at the intersection of Waycross Circle. Property is directly across from Continental Tire.

PROPERTY HIGHLIGHTS

- +/- 776 ft frontage road
- 8,200 daily traffic count
- 10 minutes from I-95
- Across from Continental Tire

Jay Davis, CCIM

O: 803 934 6597 | C: 803 934 6597
jdavis@cbccornerstone.com

Heather Tickel

803 778 1139
htickel@cbccornerstone.com



COLDWELL BANKER
COMMERCIAL
CORNERSTONE