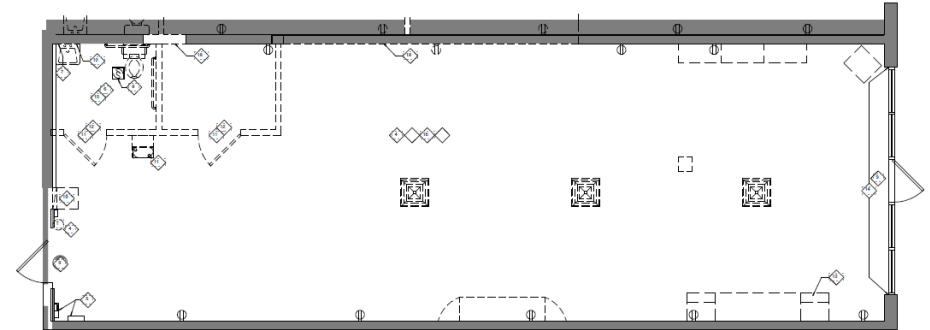


# FOR LEASE | 5929 20TH STREET | 1,204/SF |

CENTURY TOWN CENTER

5915 - 5975 20th Street Vero Beach, FL 32966



Lease Rate

**\$28.00 SF/YR (NNN)**

## OFFERING SUMMARY

Building Size:	104,560 SF
Available SF:	1,204 SF
Year Built:	2008
Zoning:	CG
Market:	Indian River County
Traffic Count:	37,000

## PROPERTY HIGHLIGHTS

- An exclusive opportunity to lease prime retail space at a highly sought-after retail center
- The center offers exceptional visibility, is easily accessible, and offers ample parking
- Available for immediate occupancy - Class A retail space with an open floor plan
- An exceptional retail center poised for any user to establish a prominent business

## SPACES

5929 20th Street

## LEASE RATE

\$28.00 SF/yr

## SPACE SIZE

1,204 SF

## PROPERTY WEBSITE

[Click Here](#)

**Kollin G. Kite**  
772 633 5640

**Keith D. Kite**  
772 633 0292



**COLDWELL BANKER**  
**COMMERCIAL**  
**PARADISE**

# LEASE

## CENTURY TOWN CENTER

5915 - 5975 20th Street Vero Beach, FL 32966



Kollin G. Kite  
772 633 5640

Keith D. Kite  
772 633 0292



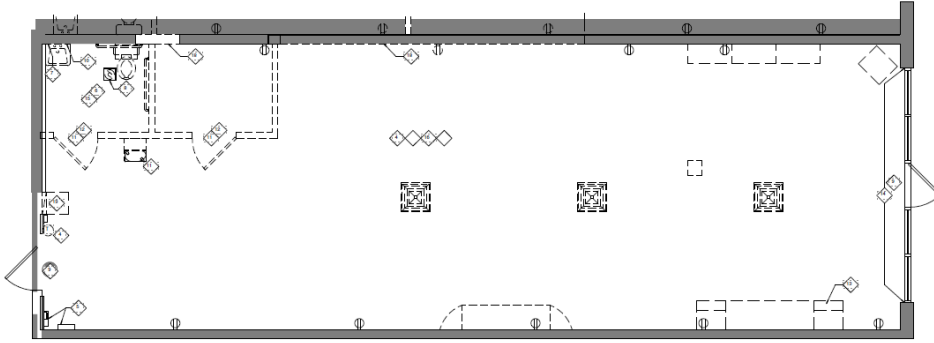
COLDWELL BANKER  
**COMMERCIAL**  
PARADISE



# LEASE

## CENTURY TOWN CENTER

5915 - 5975 20th Street Vero Beach, FL 32966



### PROPERTY HIGHLIGHTS

- An exclusive opportunity to lease prime retail space at a highly sought-after retail center
- The center offers exceptional visibility, is easily accessible, and offers ample parking
- Available for immediate occupancy - Class A retail space with an open floor plan
- This prominent retail center, anchored by national retailers, drives consistent traffic
- Vero Beach, Florida, is growing exponentially and offers a live/work/play lifestyle
- An exceptional retail center poised for any user to establish a prominent business

### SPACES

5929 20th Street

### LEASE RATE (NNN)

\$28.00 SF/yr

### SPACE SIZE

1,204 SF

### LOCATION DESCRIPTION

Located on State Road 60, The Century Town Center, anchored by Marshalls and HomeGoods, is prominently positioned and surrounded by national retail tenants. Adjacent to Home Depot, with over 37,000 Vehicles per day, the neighborhood shopping center is in the center of Vero Beach's main retail corridor. The easily accessible center is nestled in the heart of a densely populated and growing area, ensuring steady foot traffic throughout the day. The center is complemented by an appealing mix of local and national tenants, creating a diverse shopping environment that attracts a broad range of consumers from local and regional communities. You'll find a mix of residential areas, schools, and other commercial establishments in the vicinity, creating a high-demand retail environment. Century Town Center's prime location and the presence of popular anchor tenants make it an ideal shopping center for any retail business looking to expand its reach.

### DEMOGRAPHICS

	1 MILE	3 MILES	5 MILES
Total Households	1,807	17,102	40,535
Total Population	4,067	35,763	81,187
Average HH Income	\$70,125	\$63,373	\$59,108

### PROPERTY WEBSITE

[Click Here](#)

**Kollin G. Kite**  
772 633 5640

**Keith D. Kite**  
772 633 0292



**COLDWELL BANKER**  
**COMMERCIAL**  
**PARADISE**

# LEASE

## CENTURY TOWN CENTER

5915 - 5975 20th Street Vero Beach, FL 32966



**Kollin G. Kite**  
772 633 5640

**Keith D. Kite**  
772 633 0292

