

SKYPARK INDUSTRIAL CENTRAL

31951 CORYDON ROAD, LAKE ELSINORE, CA 92530

FOR LEASE
INDUSTRIAL SPACE



FOR MORE INFORMATION, PLEASE CONTACT:

CAREY PASTOR | Senior Vice President

(951) 297-7434 | careyp@cbcsocalgroup.com

CalDRE License # 01403298



**COLDWELL
BANKER
COMMERCIAL
SC**

SKYPARK INDUSTRIAL CENTRAL

31951 CORYDON ROAD, LAKE ELSINORE, CA 92530

**FOR LEASE
INDUSTRIAL SPACE**



PROPERTY HIGHLIGHTS

- 1,318 SF -1,452 SF Industrial space available
- Industrial or Auto uses allowed
- 200 Amp, 120/208v, 3 phase power supply per unit
- Specific Plan (SP) Zoning, City of Lake Elsinore
- No NNN or CAM fees
- Landlord pays trash and water

SKYPARK INDUSTRIAL CENTRAL

31951 CORYDON ROAD, LAKE ELSINORE, CA 92530

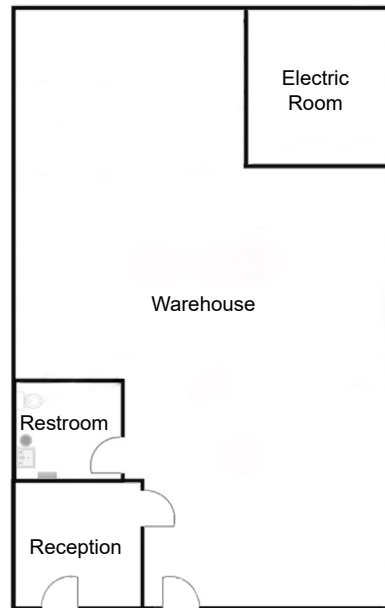
FOR LEASE
INDUSTRIAL SPACE

AVAILABILITY

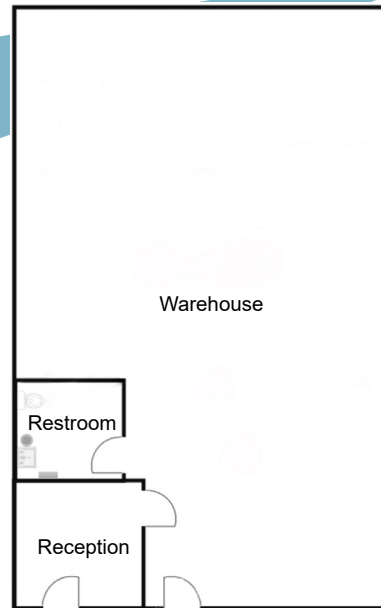
UNIT	UNIT SIZE	MONTHLY LEASE RATE	DESCRIPTION
120	±1,452 SF	\$2,323.00 Per month	Reception area, restroom and warehouse. 10x10 GL roll up door and man door
160	±1,318 SF	\$2,109.00 Per month	Reception area, restroom and warehouse. 10x10 GL roll up door and man door

Rental Rates are Industrial Gross - No CAM or NNN Fees

FLOOR PLANS

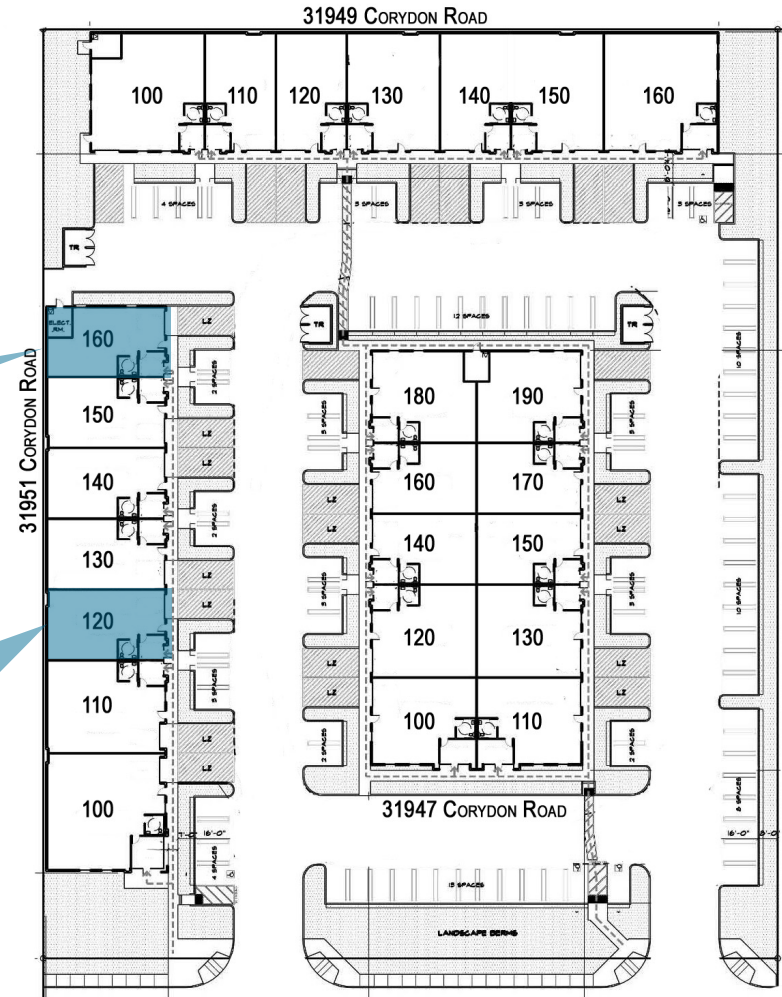


*Not to scale



*Not to scale

SITE PLAN



CORYDON ROAD

SKYPARK INDUSTRIAL CENTRAL

31951 CORYDON ROAD, LAKE ELSINORE, CA 92530

FOR LEASE
INDUSTRIAL SPACE



Coldwell Banker Commercial and the Coldwell Banker Commercial Logo are registered service marks licensed to Coldwell Banker Commercial Affiliates. Each Office is Independently Owned and Operated. All information contained herein has been obtained from sources deemed reliable. However, no warranty or guarantee is made as to the accuracy of the information.

CalDRE License # 02089395

SKYPARK INDUSTRIAL CENTRAL

31951 CORYDON ROAD, LAKE ELSINORE, CA 92530

FOR LEASE
INDUSTRIAL SPACE



Coldwell Banker Commercial and the Coldwell Banker Commercial Logo are registered service marks licensed to Coldwell Banker Commercial Affiliates. Each Office is Independently Owned and Operated. All information contained herein has been obtained from sources deemed reliable. However, no warranty or guarantee is made as to the accuracy of the information.

CalDRE License # 02089395

SKYPARK INDUSTRIAL CENTRAL

31951 CORYDON ROAD, LAKE ELSINORE, CA 92530

FOR LEASE
INDUSTRIAL SPACE



FOR MORE INFORMATION, PLEASE CONTACT:

CAREY PASTOR

Senior Vice President

951.297.7434

careyp@cbcsocalgroup.com

CalDRE # 01403298

27368 Via Industria | Suite 102
Temecula | California | 92590
t 951.200.7683 | f 951.239.3147
cbcsocalgroup.com



**COLDWELL
BANKER
COMMERCIAL**
SC