

FOR LEASE

Warehouse

**3043 N. Columbia Street
Milledgeville, Baldwin County, Georgia 31061**



EBERHARDT & BARRY



- 1,275± SF Warehouse
- Double door access
- Covered dock with ramp and small drive-in door
- Topography: Level at road grade
- All utilities available to site.

LEASE RATE: \$849 PER MONTH

FOR MORE DETAILS CONTACT:

EXCLUSIVE AGENTS:

PATRICK BARRY, IV
pbarry@cbcworldwide.com
Phone : (478) 746-8171
Cell : (478) 718-1806

BRAD BLOODWORTH
bradley.bloodworth@cbcworldwide.com
Phone: (478) 746-8171
Cell: (478) 951-3712

**Coldwell Banker Commercial
Eberhardt & Barry Inc.
990 Riverside Drive
Macon, Georgia 31201
(800) 926-0990**

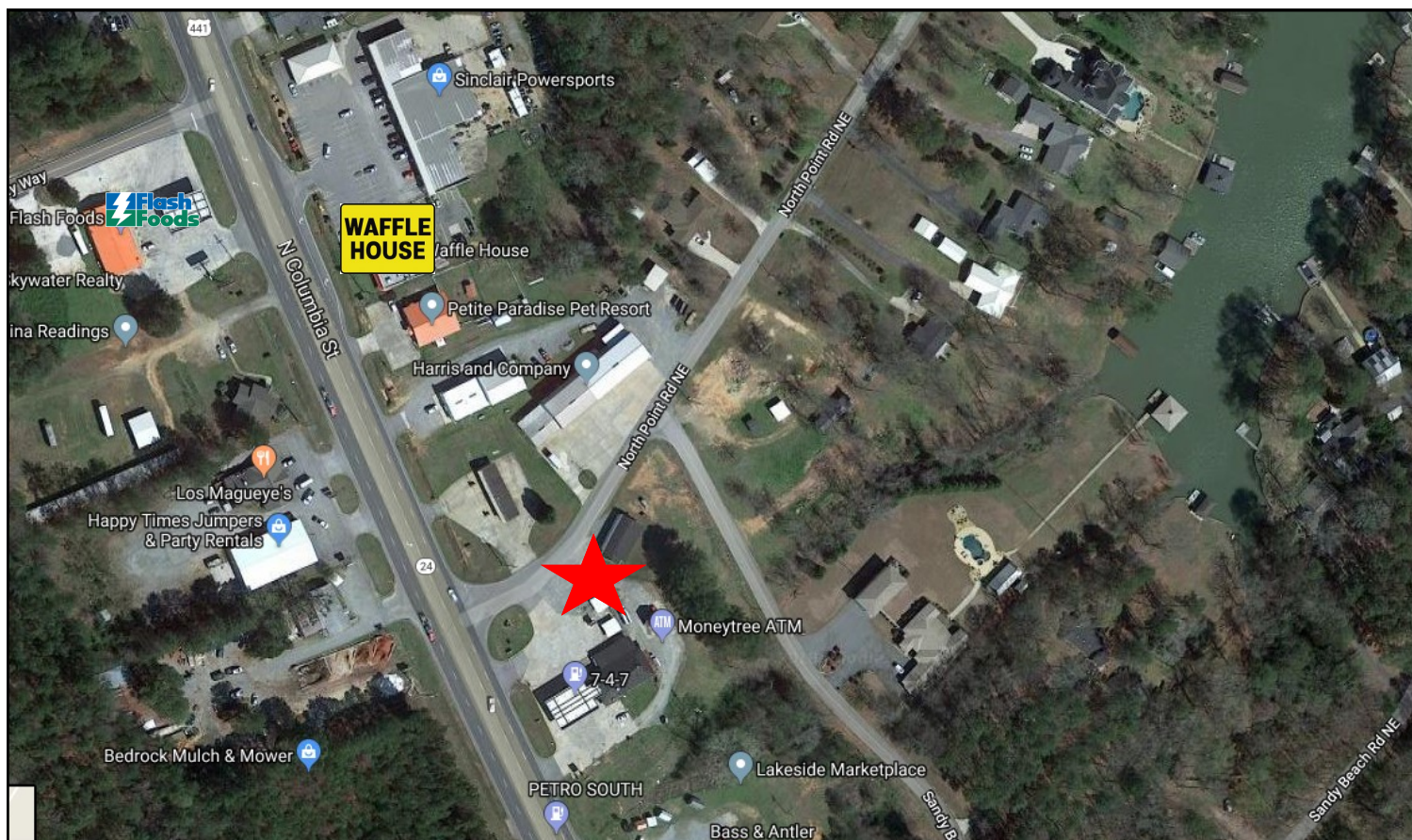


3043 N. Columbia Street - Milledgeville, GA 31061 / PHOTOS



3043 N. Columbia Street - Milledgeville, GA 31061

MAPS



KEY FACTS

1,415

Population


Average
Household Size

44.5

Median Age

\$77,041

Median Household
Income

EDUCATION

7%

No High
School
Diploma

27%

High School
Graduate

33%

Some College


33%

Bachelor's/Grad/Prof
Degree

BUSINESS


63

Total Businesses


291

Total Employees

EMPLOYMENT



White Collar

53%


Blue Collar

23%


Services

24%
2.1%

Unemployment
Rate

INCOME


\$77,041

Median Household
Income

\$32,415

Per Capita Income


\$202,223

Median Net Worth

Households By Income

The largest group: \$75,000 - \$99,999 (24.3%)

The smallest group: \$150,000 - \$199,999 (2.1%)

Indicator ▲	Value	Diff	
<\$15,000	4.9%	-13.2%	
\$15,000 - \$24,999	7.8%	-5.9%	
\$25,000 - \$34,999	7%	-2%	
\$35,000 - \$49,999	13.2%	+3.2%	
\$50,000 - \$74,999	14.3%	-4.6%	
\$75,000 - \$99,999	24.3%	+10%	
\$100,000 - \$149,999	23.8%	+12.7%	

Bars show deviation from Baldwin County ▼

KEY FACTS

5,544

Population



Average
Household Size

45.2

Median Age

\$74,922

Median Household
Income

EDUCATION

6%

No High
School
Diploma



26%

High School
Graduate



28%

Some College



40%

Bachelor's/Grad/Prof
Degree

BUSINESS



152

Total Businesses



1,154

Total Employees

EMPLOYMENT



White Collar

62%



Blue Collar

22%



Services

16%

2.9%

Unemployment
Rate

INCOME



\$74,922

Median Household
Income



\$33,876

Per Capita Income



\$203,474

Median Net Worth

Households By Income

The largest group: \$100,000 - \$149,999 (22%)

The smallest group: \$200,000+ (3.1%)

Indicator ▲	Value	Diff	
<\$15,000	5.6%	-12.5%	
\$15,000 - \$24,999	6.8%	-6.9%	
\$25,000 - \$34,999	5.5%	-3.5%	
\$35,000 - \$49,999	11.4%	+1.4%	
\$50,000 - \$74,999	20.7%	+1.8%	
\$75,000 - \$99,999	21.2%	+6.9%	
\$100,000 - \$149,999	22%	+10.9%	

Bars show deviation from

Baldwin County ▼

KEY FACTS

12,067

Population



Average
Household Size

45.0

Median Age

\$69,086

Median Household
Income

BUSINESS



299

Total Businesses



2,895

Total Employees

INCOME



\$69,086

Median Household
Income



\$34,096

Per Capita Income



\$192,449

Median Net Worth

EDUCATION

7%

No High
School
Diploma



28%

High School
Graduate



27%

Some College



37%

Bachelor's/Grad/Prof
Degree

EMPLOYMENT



White Collar

63%



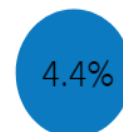
Blue Collar

21%



Services

16%



Unemployment
Rate

Households By Income

The largest group: \$50,000 - \$74,999 (21.8%)

The smallest group: \$150,000 - \$199,999 (3.8%)

Indicator ▲	Value	Diff
<\$15,000	6.8%	-11.3%
\$15,000 - \$24,999	7.7%	-6%
\$25,000 - \$34,999	6.2%	-2.8%
\$35,000 - \$49,999	11.3%	+1.3%
\$50,000 - \$74,999	21.8%	+2.9%
\$75,000 - \$99,999	19.6%	+5.3%
\$100,000 - \$149,999	18.3%	+7.2%

Bars show deviation from

Baldwin County ▼