

LEASE

OFFICE SPACE

4611 IVEY DRIVE, SUITE "450", MACON, GA 31206



LEASE RATE: \$11.45/PSF, NET

OFFERING SUMMARY

BUILDING SIZE: 5,000± SF Office

PARKING: Asphalt parking for 30 plus vehicles
(Expandable)

HVAC: Central heat and air conditioning

UTILITIES: All utilities serve the site

ZONED: PDC
Planned Development Commercial

LOCATION OVERVIEW

- Located two blocks west of Interstate 475 off Eisenhower Parkway.
- 80 miles to Atlanta
- 85 miles to Columbus

PROPERTY OVERVIEW

- Office consisting of 5,000± SF
 - Floor plan consists of:
 - Six (6) private offices
 - Large work area
 - Conference room
 - One restroom
 - Janitor closet
- Common/shared space: Lobby, conference room and break room

ARTHUR P BARRY III, SIOR
478.746.8171 Office • 478.731.8000 Cell
abarry@cbcworldwide.com
CBCMACON.COM



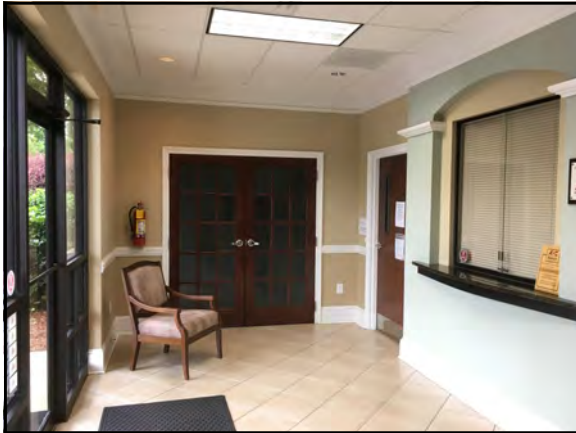
**COLDWELL BANKER
COMMERCIAL**
EBERHARDT & BARRY

Revised 3/30/22

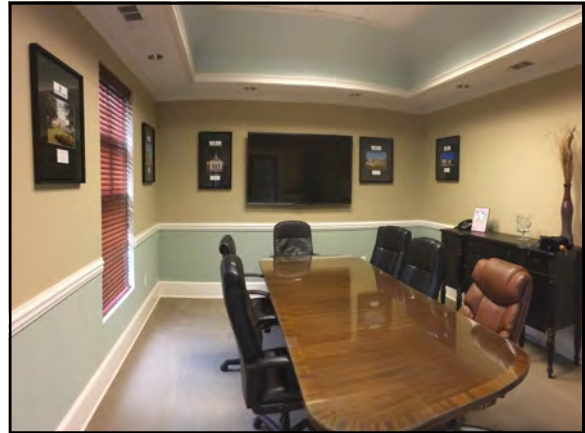
LEASE

OFFICE SPACE

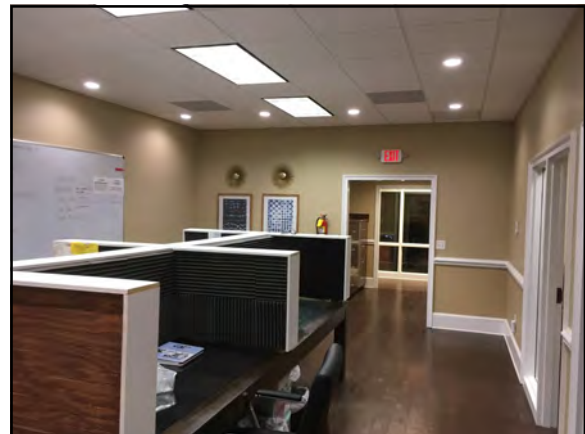
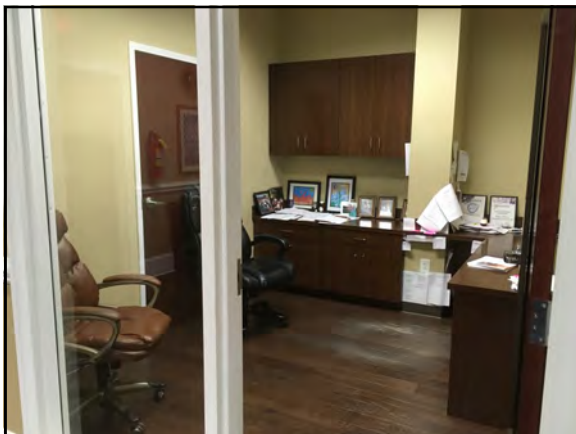
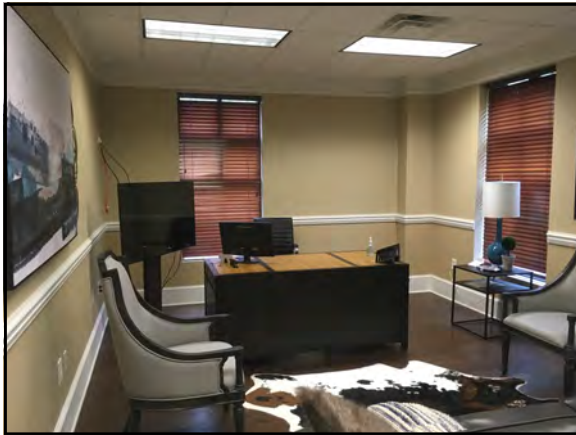
4611 IVEY DRIVE, SUITE "450", MACON, GA 31206



Shared Lobby



Shared Conference Room



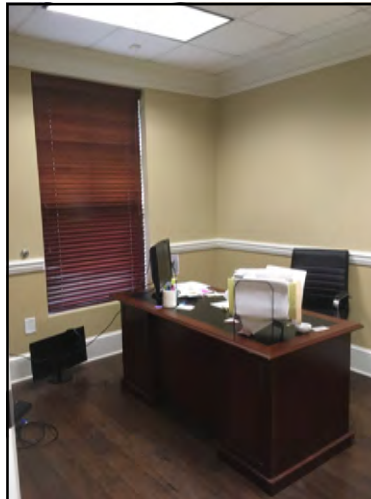
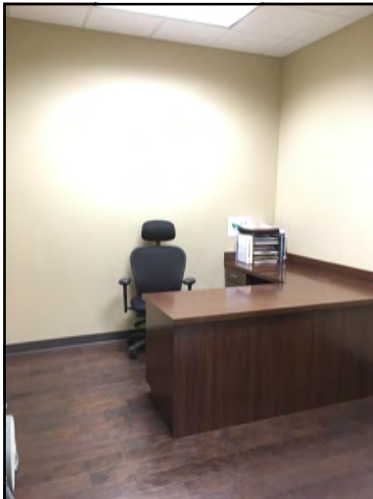
LEASE

OFFICE SPACE

4611 IVEY DRIVE, SUITE "450", MACON, GA 31206



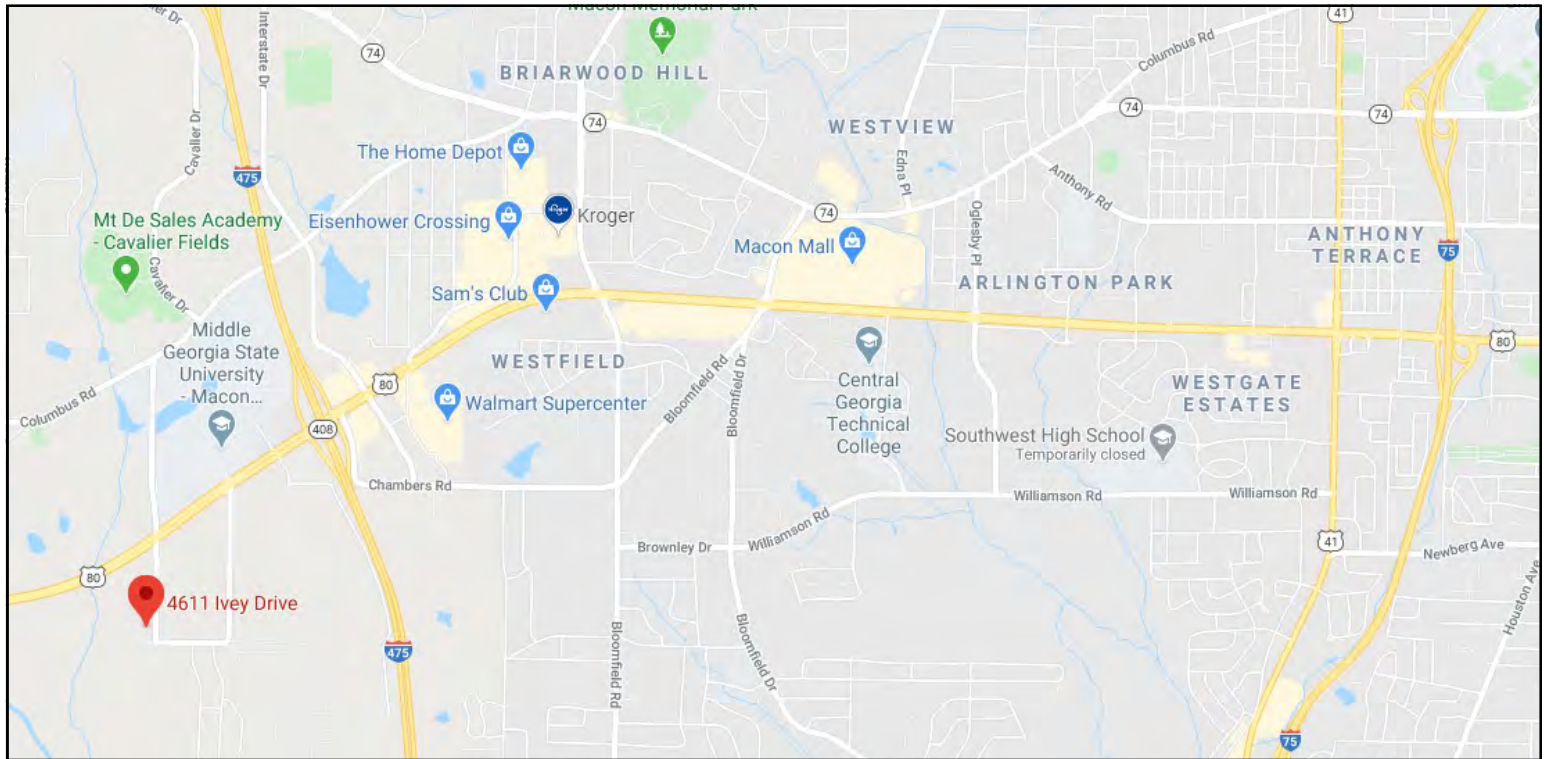
Shared Break Room



LEASE

OFFICE SPACE

4611 IVEY DRIVE, SUITE "450", MACON, GA 31206



5

ARTHUR P BARRY III, SIOR
478.746.8171 Office • 478.731.8000 Cell
abarry@cbcworldwide.com
CBCMACON.COM



COLDWELL BANKER
COMMERCIAL
EBERHARDT & BARRY

Bibb County

Bibb County, GA 15
Bibb County, GA (13021)
Geography: County

Prepared by Esri

KEY FACTS

156,935

Population



2.5

Average
Household Size

37.4

Median Age

\$43,016

Median Household
Income

EDUCATION

13%

No High
School
Diploma



30%

High School
Graduate



30%

Some College



27%

Bachelor's/Grad/Prof
Degree

BUSINESS



6,469

Total Businesses



87,677

Total Employees

EMPLOYMENT



White Collar

67%



Blue Collar

19%



Services

14%



Unemployment
Rate

INCOME



\$43,016

Median Household
Income



\$25,623

Per Capita Income



\$46,997

Median Net Worth

Households By Income

The largest group: <\$15,000 (17.7%)

The smallest group: \$200,000+ (4.1%)

Indicator ▲	Value	Diff	
<\$15,000	17.7%	+7.2%	
\$15,000 - \$24,999	10.7%	+1.9%	
\$25,000 - \$34,999	13.0%	+4.1%	
\$35,000 - \$49,999	14.0%	+1.7%	
\$50,000 - \$74,999	14.6%	-3.6%	
\$75,000 - \$99,999	10.8%	-1.9%	
\$100,000 - \$149,999	10.8%	-4.1%	
\$150,000 - \$199,999	4.2%	-2.1%	
\$200,000+	4.1%	-3.2%	

Bars show deviation from Georgia