

# PASADENA STREET INDUSTRIAL PARK

18510 PASADENA STREET, LAKE ELSINORE, CALIFORNIA 92530

INDUSTRIAL SPACE  
FOR LEASE



**FOR MORE INFORMATION, PLEASE CONTACT:**

**CAREY PASTOR** | Senior Vice President

(951) 297-7434 | [careyp@cbcsocalgroup.com](mailto:careyp@cbcsocalgroup.com)

CalDRE License # 01403298



**COLDWELL  
BANKER  
COMMERCIAL  
SC**



# PASADENA STREET INDUSTRIAL PARK

18510 PASADENA STREET, LAKE ELSINORE, CALIFORNIA 92530

INDUSTRIAL SPACE  
FOR LEASE



## PROPERTY HIGHLIGHTS

- +/-2,147 SF Industrial Space For Lease
- Office Improvements Include: reception, private office and restroom
- Warehouse amenities include: 16' clear height, 12'w x 12'h rear loading roll-up door, a main door, lighting, skylights and 200 Amp, 210/208v 3 phase power supply
- Close proximity to I-15 freeway at Central Avenue
- Retail and restaurant amenities nearby including: Lowe's The Home Depot, Costco, Target, Chili's, Starbucks

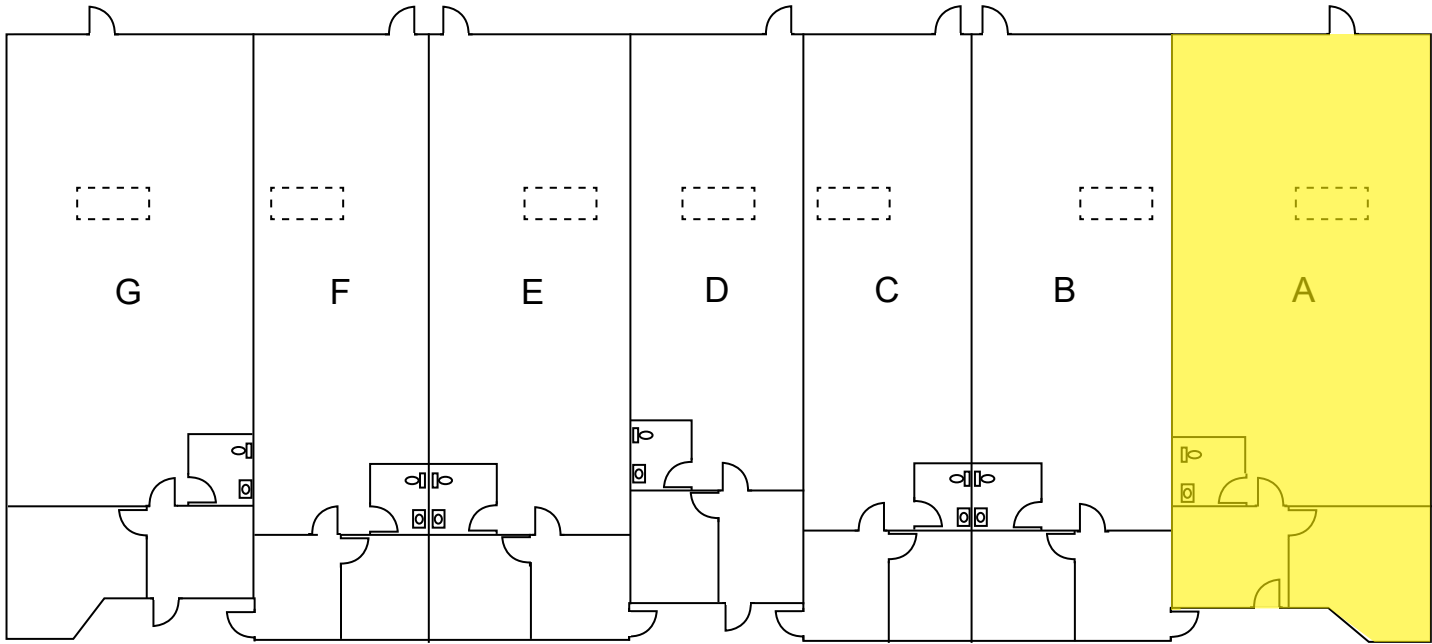
# PASADENA STREET INDUSTRIAL PARK

18510 PASADENA STREET, LAKE ELSINORE, CALIFORNIA 92530

INDUSTRIAL SPACE  
FOR LEASE

## SITE PLAN / FLOOR PLAN

UNIT	UNIT SIZE	LEASE RATE	DESCRIPTION
A	±2,147 SF	\$3,133.00 per month	Reception area, 1 private office, restroom, balance of space is warehouse with 12 x 12 GL rear loading roll-up door.





# PASADENA STREET INDUSTRIAL PARK

18510 PASADENA STREET, LAKE ELSINORE, CALIFORNIA 92530

INDUSTRIAL SPACE  
FOR LEASE



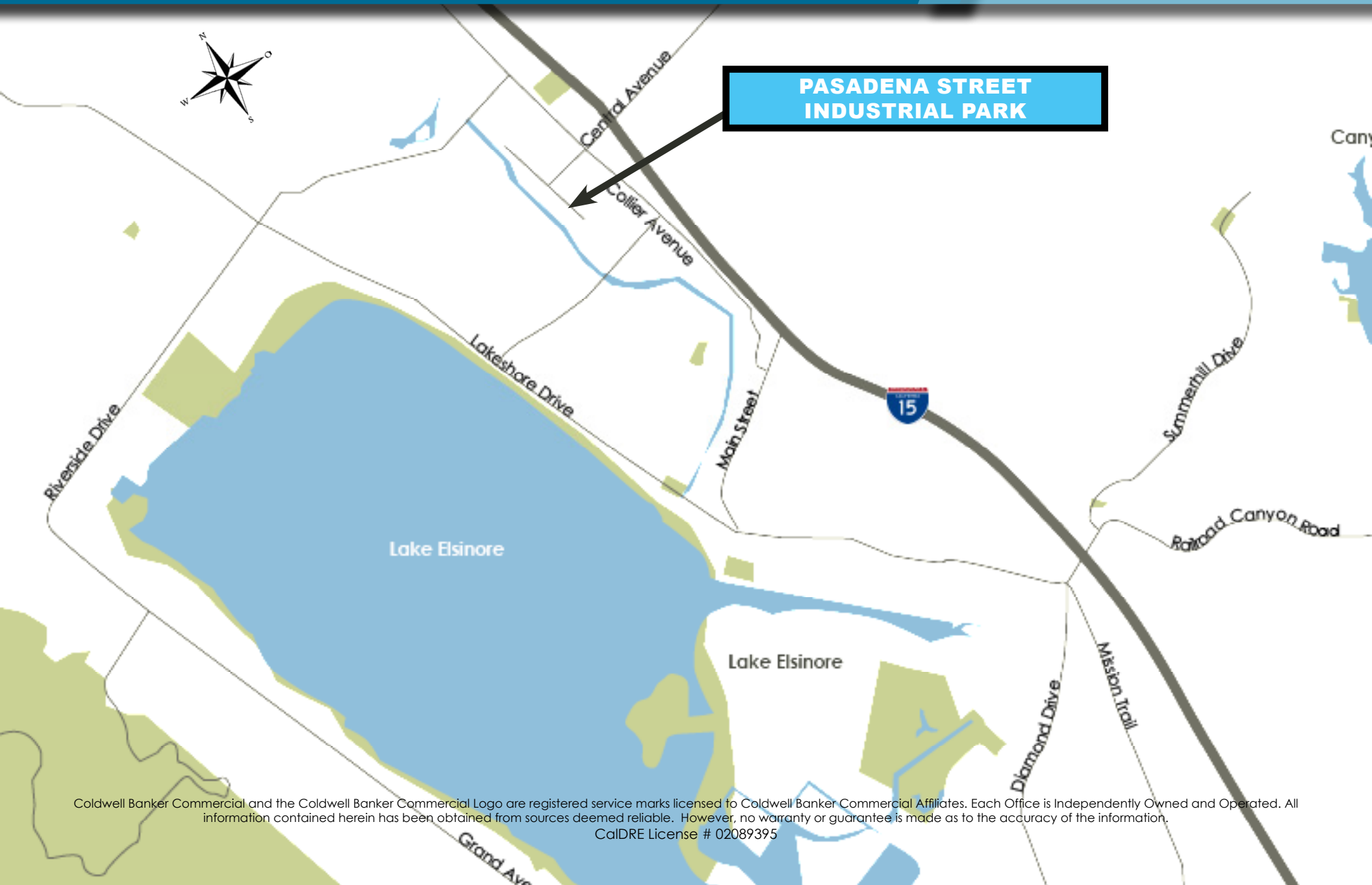
Coldwell Banker Commercial and the Coldwell Banker Commercial Logo are registered service marks licensed to Coldwell Banker Commercial Affiliates. Each Office is Independently Owned and Operated. All information contained herein has been obtained from sources deemed reliable. However, no warranty or guarantee is made as to the accuracy of the information.

CalDRE License # 02089395

# PASADENA STREET INDUSTRIAL PARK

18510 PASADENA STREET, LAKE ELSINORE, CALIFORNIA 92530

INDUSTRIAL SPACE  
FOR LEASE



**PASADENA STREET  
INDUSTRIAL PARK**

Coldwell Banker Commercial and the Coldwell Banker Commercial Logo are registered service marks licensed to Coldwell Banker Commercial Affiliates. Each Office is Independently Owned and Operated. All information contained herein has been obtained from sources deemed reliable. However, no warranty or guarantee is made as to the accuracy of the information.

CalDRE License # 02089395



# PASADENA STREET INDUSTRIAL PARK

18510 PASADENA STREET, LAKE ELSINORE, CALIFORNIA 92530

INDUSTRIAL SPACE  
FOR LEASE



FOR MORE INFORMATION, PLEASE CONTACT:

**CAREY PASTOR**

Senior Vice President

951.297.7434

[careyp@cbcsocalgroup.com](mailto:careyp@cbcsocalgroup.com)

CalDRE # 01403298

27368 Via Industria | Suite 102

Temecula | California | 92590

t 951.200.7683 | f 951.239.3147

[cbcsocalgroup.com](http://cbcsocalgroup.com)



**COLDWELL  
BANKER  
COMMERCIAL**  
SC