

LEASE

MARTIN WAY OFFICE

3905 Martin Way E Olympia, WA 98506



OFFERING SUMMARY

Lease Rate:	\$30 SF/yr
Lease Type:	Modified Gross (MG)
Building Size:	9,600 SF
Available SF:	465 SF
Lot Size:	0.81 Acres
Year Built:	1988

PROPERTY OVERVIEW

Professional office building close to amenities. Easy access to I-5 and downtown Olympia and Lacey. Plenty of parking in front and rear of building.

PROPERTY HIGHLIGHTS

- Suite D1 - 465 SF
- Located on high traffic Martin Way
- Near I-5
- Between DT Lacey and DT Olympia
- Ample parking
- Several restaurants within walking distance

SPACES

Suite D1 AVAILABLE JULY 1, 2022

LEASE RATE

\$30.00 SF/yr

SPACE SIZE

465 SF

Jason Hearn

360 701 3490

jason.hearn@coldwellbankercommercialdanforth.com

Bob Fredrickson

206 595 7232

bfredrickson@cbcworldwide.com



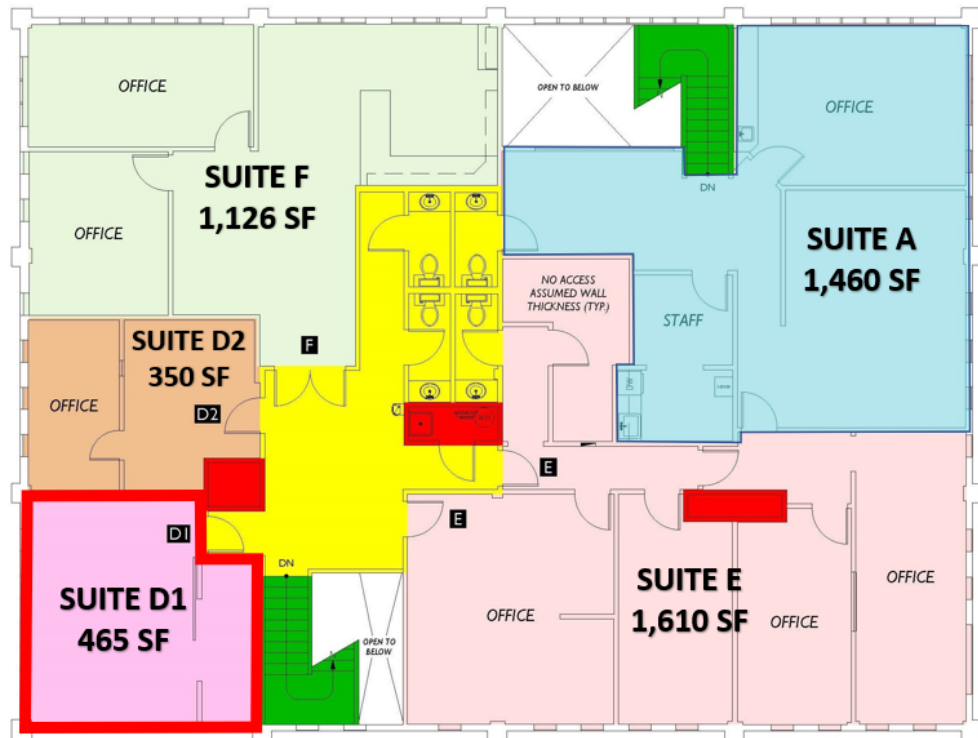
**COLDWELL BANKER
COMMERCIAL
DANFORTH**

LEASE

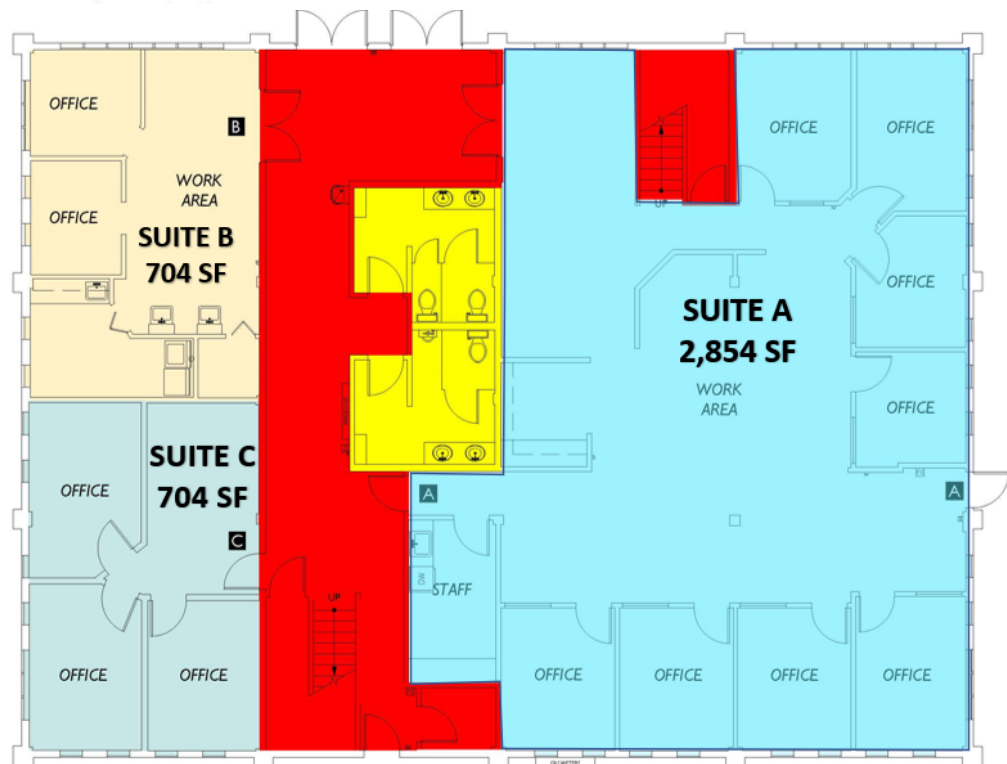
MARTIN WAY OFFICE

3905 Martin Way E Olympia, WA 98506

Floor 2



Floor 1



Jason Hearn
360 701 3490
jason.hearn@coldwellbankercommercialdanforth.com

Bob Fredrickson
206 595 7232
bfredrickson@cbcworldwide.com

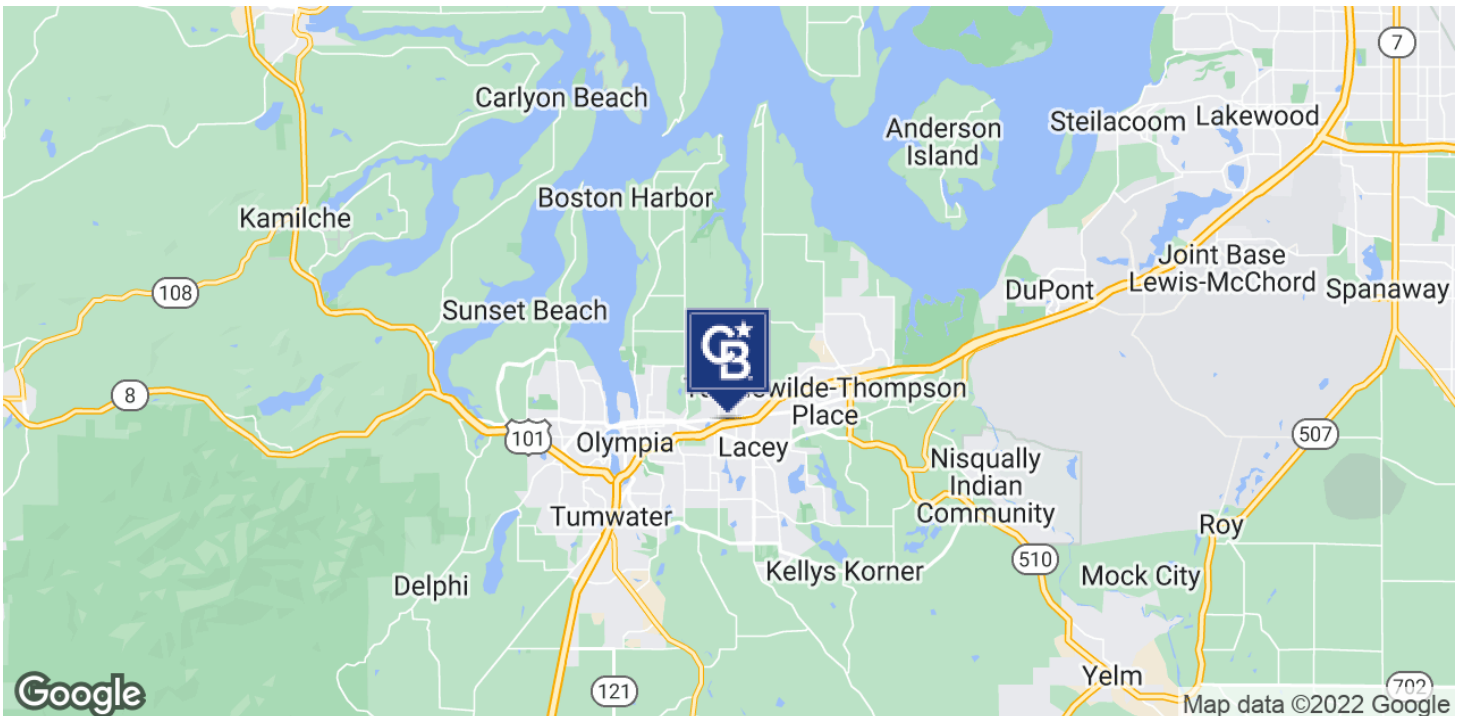


COLDWELL BANKER
COMMERCIAL
DANFORTH

LEASE

MARTIN WAY OFFICE

3905 Martin Way E Olympia, WA 98506



Jason Hearn

360 701 3490

jason.hearn@coldwellbankercommercialdanforth.com

Bob Fredrickson

206 595 7232

bfredrickson@cbcworldwide.com



COLDWELL BANKER
COMMERCIAL
DANFORTH