

# SALE

## MYRTLE BEACH HIGHWAY 505

505 Myrtle Beach Hwy Sumter, SC 29153



### OFFERING SUMMARY

Sale Price:	\$50,000
Lot Size:	1 Acre
Zoning:	LI-W
APN:	268-15-01-034

### PROPERTY DESCRIPTION

One acre of land just off the convergence of Myrtle Beach Highway and US 378 in Sumter, SC. Property is located halfway between I-95 to the east and Shaw AFB to the west.

### PROPERTY HIGHLIGHTS

- 130 ft Frontage on Myrtle Beach Highway
- Convenient Access to I95 to and from Sumter
- AADT Myrtle Beach Highway - 14,400
- AADT US 378 - 8,700

**Stephen DesChamps**

803 983 7302

sdeschamps@cbccornerstone.com



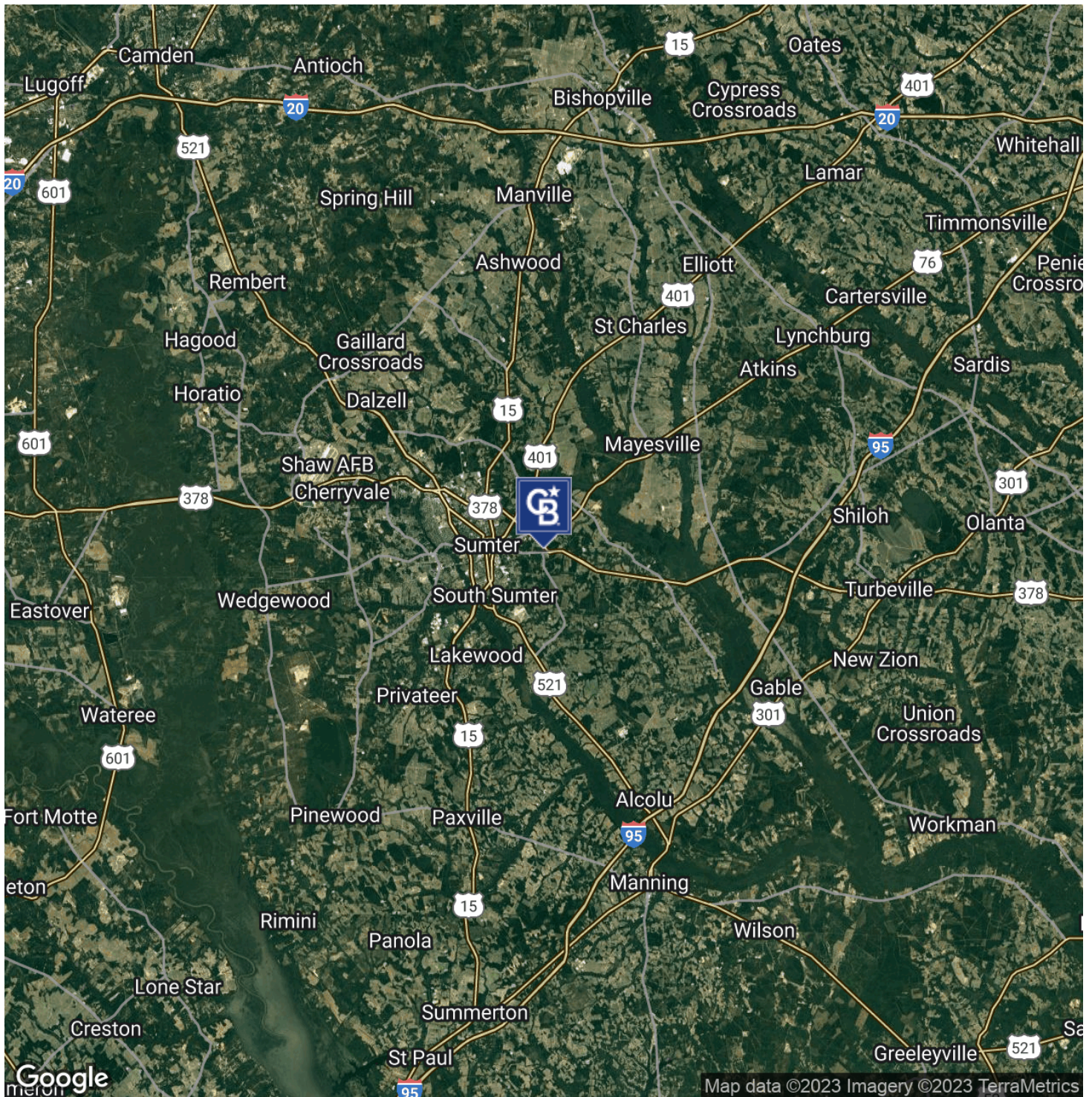
**COLDWELL BANKER  
COMMERCIAL**  
CORNERSTONE



# SALE

## MYRTLE BEACH HIGHWAY 505

505 Myrtle Beach Hwy Sumter, SC 29153



**Stephen DesChamps**

803 983 7302

sdeschamps@cbccornerstone.com



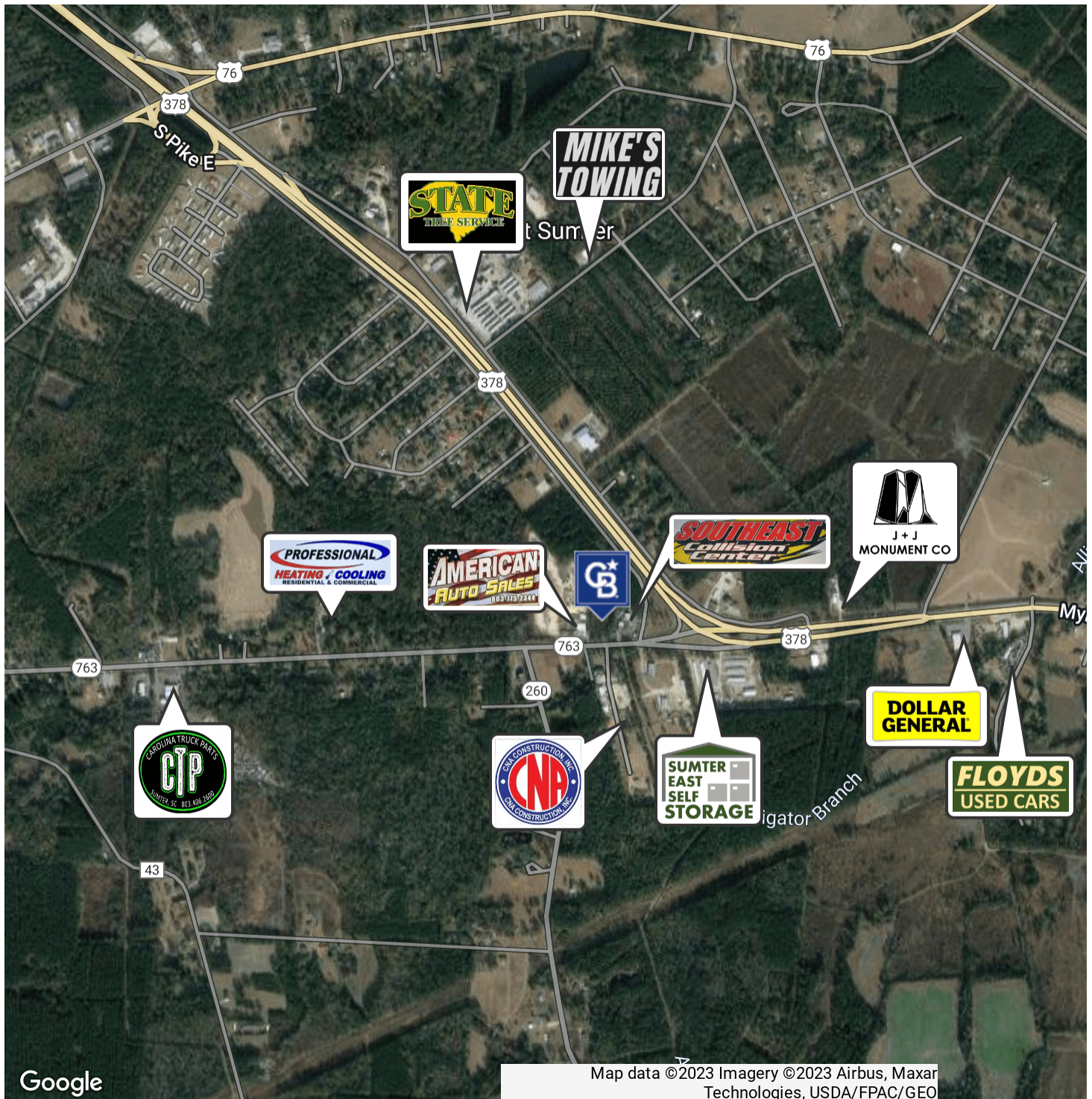
**COLDWELL BANKER  
COMMERCIAL**  
CORNERSTONE



# SALE

## MYRTLE BEACH HIGHWAY 505

505 Myrtle Beach Hwy Sumter, SC 29153



**Stephen DesChamps**

803 983 7302

sdeschamps@cbccornerstone.com

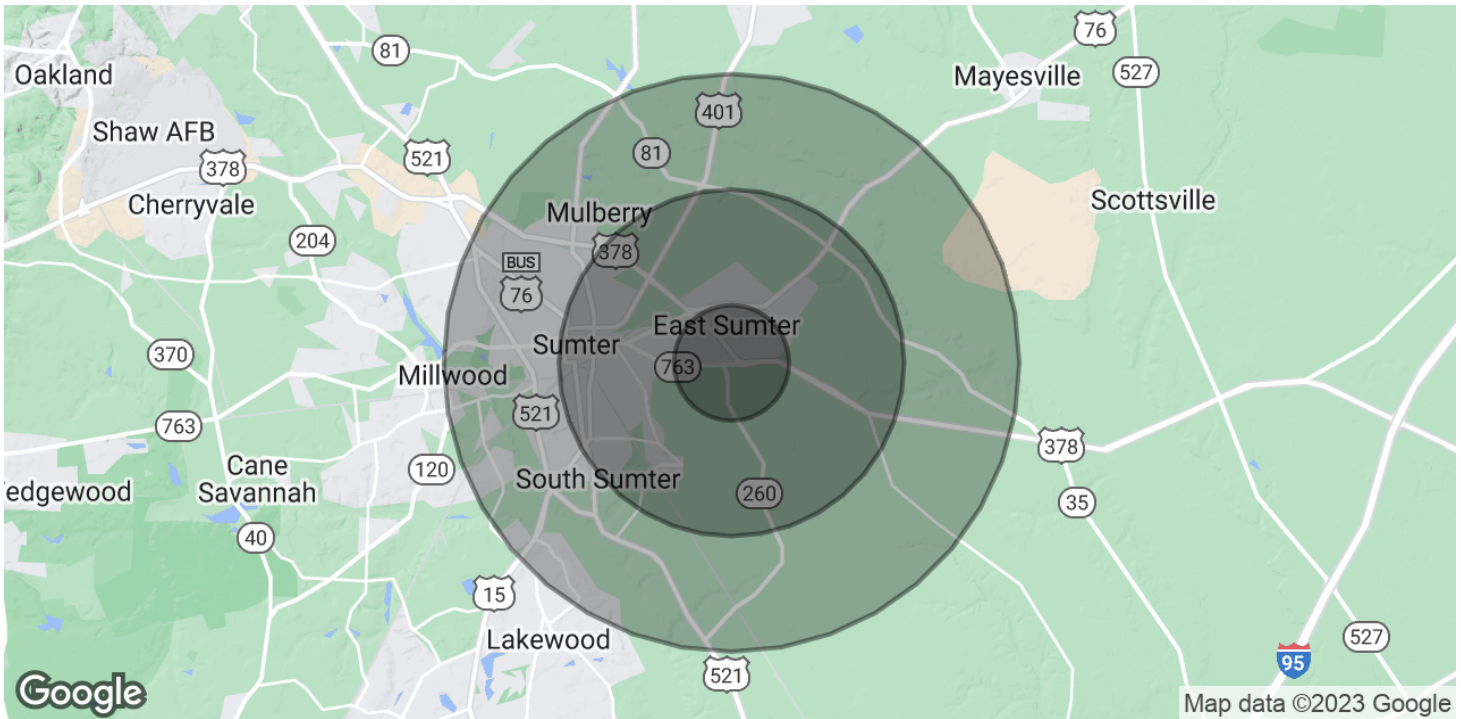


**COLDWELL BANKER  
COMMERCIAL**  
CORNERSTONE

# SALE

## MYRTLE BEACH HIGHWAY 505

505 Myrtle Beach Hwy Sumter, SC 29153



### POPULATION

	1 MILE	3 MILES	5 MILES
Total Population	920	12,863	31,458
Average Age	32.2	33.4	37.1
Average Age (Male)	26.2	30.9	35.2
Average Age (Female)	32.9	35.6	38.9

### HOUSEHOLDS & INCOME

	1 MILE	3 MILES	5 MILES
Total Households	440	5,896	15,296
# of Persons per HH	2.1	2.2	2.1
Average HH Income	\$43,936	\$36,979	\$39,398
Average House Value	\$71,892	\$73,388	\$92,427

\* Demographic data derived from 2020 ACS - US Census

**Stephen DesChamps**

803 983 7302

sdeschamps@cbccornerstone.com



**COLDWELL BANKER**  
**COMMERCIAL**  
CORNERSTONE