

57.90 ACRES OF RESIDENTIAL LAND IN AWENDAW FOR SALE

57.90 ACRES

4938 Woodville Rd

4938 WOODVILLE RD
AWENDAW, SC



COLDWELL BANKER
COMMERCIAL
ATLANTIC

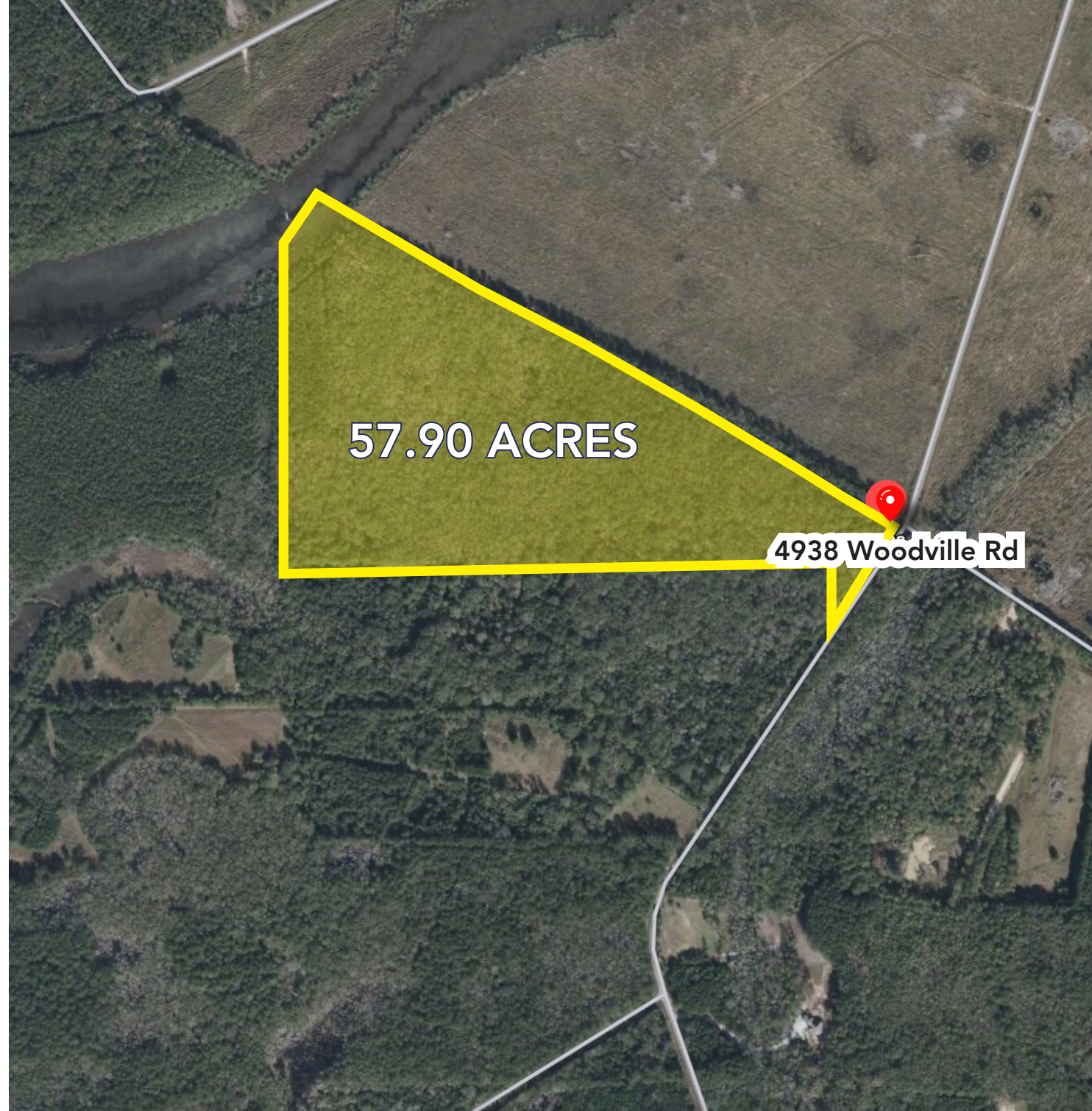
57.90 ACRES OF RESIDENTIAL LAND IN AWENDAW FOR SALE

\$1,795,000 - 57.90 ACRES

TMS #628-00-00-001

57.9 Acres of residential land located in a pristine area of Awendaw, just 2 miles from 17 North. This beautiful woodland property is a delightful combination of Pines and Hardwoods. The rear of the property backs to the Marsh, providing a splendid view for new residential uses.

Zoned RR-3 in Charleston County. Buildable land with well and septic. A perfect candidate for limited development or private estate. An easy drive to Mt Pleasant (20 minutes).



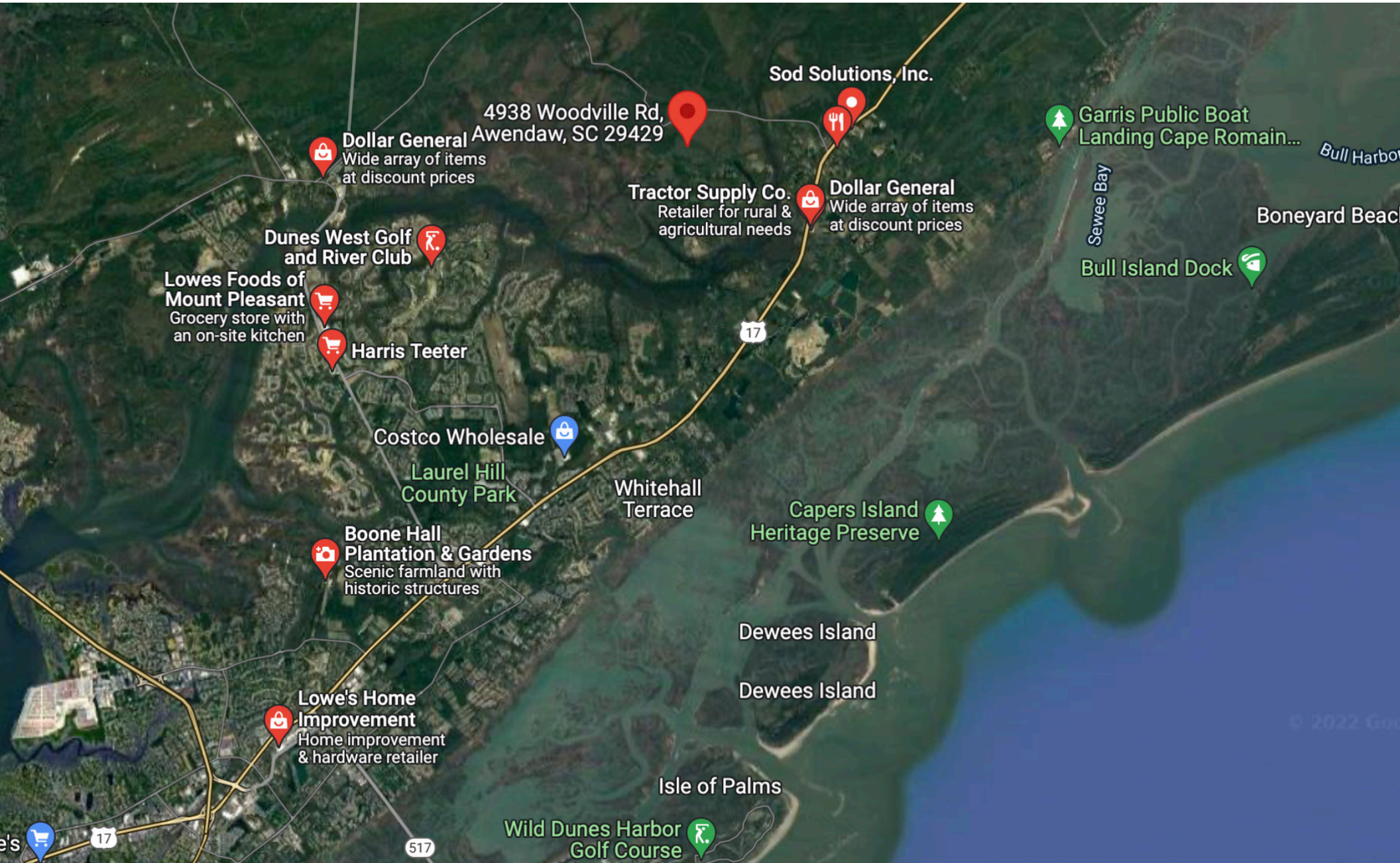
**COLDWELL BANKER
COMMERCIAL
ATLANTIC**

4938 Woodville Rd | Awendaw, SC 29429

Neal Walsh • nwalsh@cbcatlantic.com |

57.90 ACRES OF RESIDENTIAL LAND IN AWENDAW FOR SALE

\$1,795,000 - 57.90 ACRES



Neal Walsh
SENIOR BROKER
843.330.3787
nwalsh@cbsatlantic.com



**COLDWELL BANKER
COMMERCIAL**
ATLANTIC

3506 W Montague Ave | North Charleston, SC 29418
cbsatlantic.com | cbcretailatlantic.com

The information contained herein should be considered confidential and remains the sole property of Coldwell Banker Commercial Atlantic at all times. Although every effort has been made to ensure accuracy, no liability will be accepted for any errors or omissions. Disclosure of any information contained herein is prohibited except with the express written permission of Coldwell Banker Commercial Atlantic.