

# Available for Lease – Medical/Professional Office Use

## 1077 Bridgeport Avenue, Shelton, CT



**Prime location, accessible to Route 8, Exit 11**

**Building Size:** 28,401 SF

**Available:** Floor 2 - Suite 201 - 4,860 SF (Space can be subdivided to 1,215 SF or 2,430 SF)

- Location, Location, Location!!!! Directly accessible at intersection of Route 8, Exit 11, Minutes from banks, restaurants, shopping and hotels
- Architecturally appealing & efficient floor plan maximizing window exposure drawing sunlight into the core from all angles.
- Onsite Ownership and Property Management
- Greater Bridgeport and Valley Transit Bus Lines stop in front of Property
- Newly Renovated Lobby 2016
- Parking: 3.5/1,000 SF (Covered spaces available, access via elevator and main staircase)
- Lease Rate: \$18.95 plus Electric



**Christopher K. O'Hara**  
cohara@coldwellbanker.com

**(203) 831-4187 (O) (203) 257-0032 (M)**

**Coldwell Banker Commercial Realty**  
355 Riverside Avenue  
Westport, Connecticut 06880

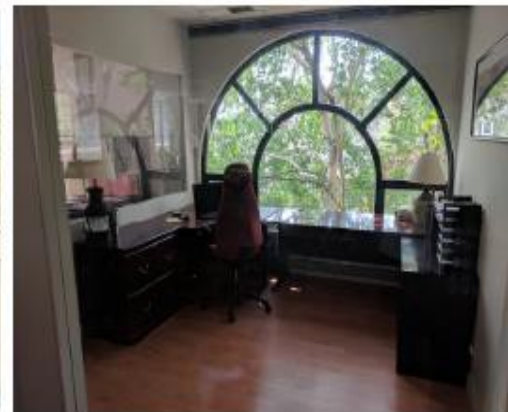
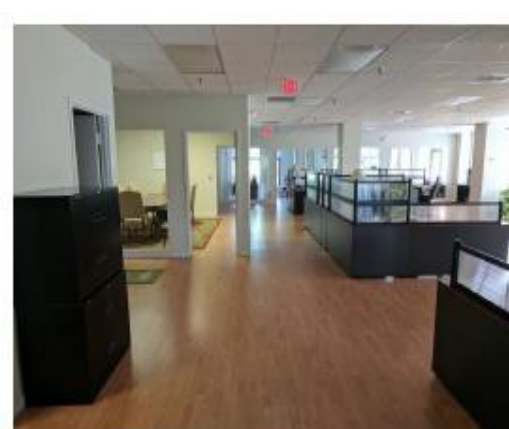


# *Direct Highway Access*

## **1077 Bridgeport Avenue, Shelton, CT**



*\*Bridgeport 10 Minutes \*Fairfield 15 Minutes \*Norwalk 25 Minutes \*Stamford 30 Minutes*



**COLDWELL  
BANKER  
COMMERCIAL**

**REALTY**

**Christopher K. O'Hara**

[cohara@coldwellbanker.com](mailto:cohara@coldwellbanker.com)

**(203) 831-4187 (O) (203) 257-0032 (M)**

**Coldwell Banker Commercial Realty**

355 Riverside Avenue

Westport, Connecticut 06880