



# 6835 CAINE RD

Columbus, OH 43235

SALE /  
LEASE



SALE PRICE	SUBJECT TO OFFER
OFFERING SUMMARY	
Available SF:	.050± acres to 4.04± acres
Lease Rate:	Negotiable
Lot Size:	4.04 Acres
Zoning:	C4 & LC4 - Regional Scale Commercial District

## LOCATION OVERVIEW

The site is highly visible and located along the northern arc of I-270 and Sawmill Road. It is situated in one of the busiest retail corridors in central Ohio. This area also has a high concentration of other uses and single-family neighborhoods.

## PROPERTY HIGHLIGHTS

- 0.50± acres to 4.04± acres available
- Great opportunity for redevelopment
- Sawmill Road frontage
- Immediate access to I-270 ramps

## PROPERTY WEBSITE

[bit.ly/6835CaineRd](http://bit.ly/6835CaineRd)

CBC-ASPIRE.COM

Anthony Maronitis, CCIM, MS  
614 352 8669  
amaronitis@cbc-aspire.com

Chris Howard  
614 264 6801  
choward@cbc-aspire.com

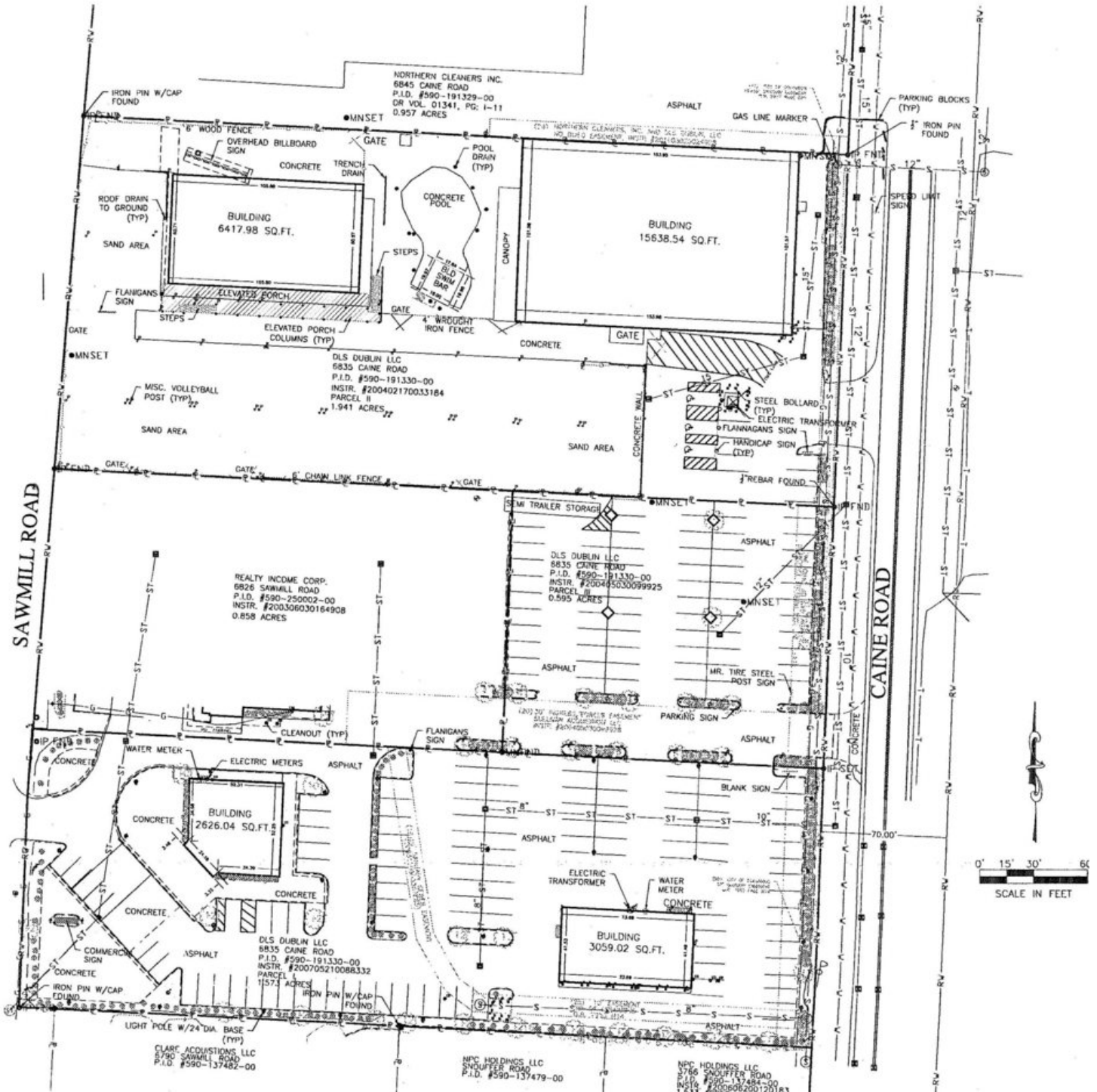
©2020 Coldwell Banker. All Rights Reserved. Coldwell Banker and the Coldwell Banker Commercial logos are trademarks of Coldwell Banker Real Estate LLC. The Coldwell Banker® System is comprised of company owned offices which are owned by a subsidiary of Realogy Brokerage Group LLC and franchised offices which are independently owned and operated. The Coldwell Banker System fully supports the principles of the Equal Opportunity Act.



## 6835 CAINE RD

Columbus, OH 43235

SALE /  
LEASE



CBC-ASPIRE.COM

Anthony Maronitis, CCIM, MS  
614 352 8669  
amaronitis@cbc-aspire.com

Chris Howard  
614 264 6801  
choward@cbc-aspire.com

©2020 Coldwell Banker. All Rights Reserved. Coldwell Banker and the Coldwell Banker Commercial logos are trademarks of Coldwell Banker Real Estate LLC. The Coldwell Banker® System is comprised of company owned offices which are owned by a subsidiary of Reology Brokerage Group LLC and franchised offices which are independently owned and operated. The Coldwell Banker System fully supports the principles of the Equal Opportunity Act.



**COLDWELL  
BANKER  
COMMERCIAL**

ASPIRE REALTY SERVICES





## 6835 CAINE RD

Columbus, OH 43235

SALE /  
LEASE



CBC-ASPIRE.COM

Anthony Maronitis, CCIM, MS  
614 352 8669  
amaronitis@cbc-aspire.com

Chris Howard  
614 264 6801  
choward@cbc-aspire.com

©2020 Coldwell Banker. All Rights Reserved. Coldwell Banker and the Coldwell Banker Commercial logos are trademarks of Coldwell Banker Real Estate LLC. The Coldwell Banker® System is comprised of company owned offices which are owned by a subsidiary of Realogy Brokerage Group LLC and franchised offices which are independently owned and operated. The Coldwell Banker System fully supports the principles of the Equal Opportunity Act.



**COLDWELL  
BANKER  
COMMERCIAL**

**ASPIRE REALTY SERVICES**



## 6835 CAINE RD

Columbus, OH 43235

SALE /  
LEASE

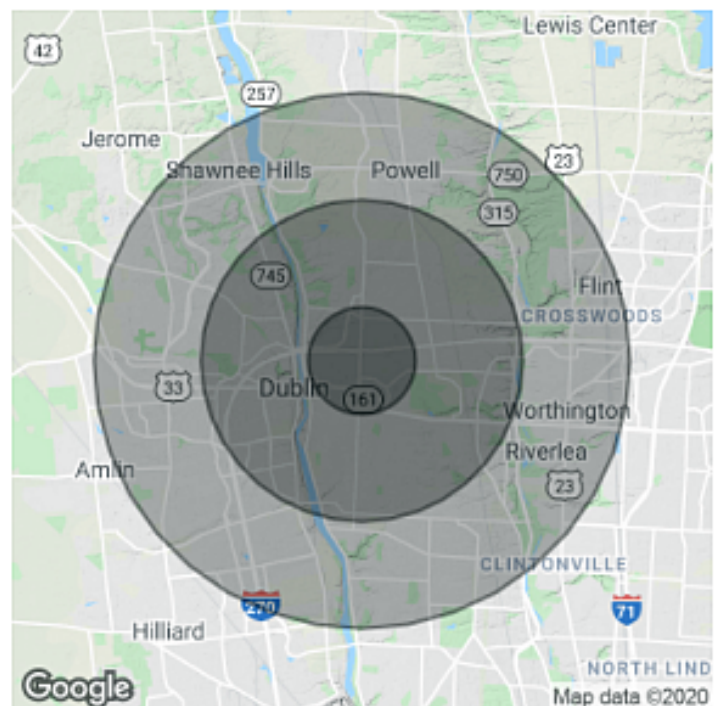


POPULATION	1 MILE	3 MILES	5 MILES
Total Population	7,970	83,087	190,210
Average age	32.3	34.4	37.1

HOUSEHOLDS & INCOME	1 MILE	3 MILES	5 MILES
Total households	3,322	34,520	78,038
# of persons per HH	2.4	2.4	2.4
Average HH income	\$75,366	\$86,257	\$101,338
Average house value	\$231,856	\$260,036	\$313,813

\* Demographic data derived from 2010 US Census

CROSS STREETS	DIRECTION	YEAR	AADT
Sawmill Rd S of I-270	2-Way	2015	51,558
Sawmill Rd & Federated Blvd	2-Way	2015	38,603
I-270 at ODOT 689	2-Way	2010	123,840
I-270 at ODOT 692	2-Way	2010	141,240



CBC-ASPIRE.COM

Anthony Maronitis, CCIM, MS  
614 352 8669  
amaronitis@cbc-aspire.com

Chris Howard  
614 264 6801  
choward@cbc-aspire.com

©2020 Coldwell Banker. All Rights Reserved. Coldwell Banker and the Coldwell Banker Commercial logos are trademarks of Coldwell Banker Real Estate LLC. The Coldwell Banker® System is comprised of company owned offices which are owned by a subsidiary of Realty Brokerage Group LLC and franchised offices which are independently owned and operated. The Coldwell Banker System fully supports the principles of the Equal Opportunity Act.



**COLDWELL  
BANKER  
COMMERCIAL**

ASPIRE REALTY SERVICES