

# LEASE

## OFFICE SPACE | PETTIGRU HISTORIC DISTRICT

200 Whitsett St., Suite C Greenville, SC 29601



**AVAILABLE** +/-1,480 SF

**LEASE RATE** \$2,775.00/Month Plus Utilities

**T. Cox**  
864 250 4043



**COLDWELL BANKER  
COMMERCIAL  
CAINE**



# LEASE

## OFFICE SPACE | PETTIGRU HISTORIC DISTRICT

200 Whitsett St., Suite C Greenville, SC 29601



### OFFERING SUMMARY

Lease Rate:	\$2,775.00 per month (MG)
Building Size:	+/-5,280 SF
Available SF:	+/-1,480 SF
Zoning:	OD - City of Greenville
Market:	Greenville/Spartanburg

### PROPERTY HIGHLIGHTS

- Downtown Greenville's Pettigru Historic District
- Tenant pays utilities
- 2nd floor space
- 3 private offices
- Large open work area
- Kitchenette
- Restroom
- Surface parking available on-site
- Exterior signage available
- Easy access from I-385
- Close proximity to downtown
- Corner of Whitsett Street and Carolina Drive
- Available 12/1/2023

**T. Cox**  
864 250 4043



**COLDWELL BANKER  
COMMERCIAL**  
CAINE



# LEASE

## OFFICE SPACE | PETTIGRU HISTORIC DISTRICT

200 Whitsett St., Suite C Greenville, SC 29601



---

**T. Cox**  
864 250 4043



**COLDWELL BANKER**  
**COMMERCIAL**  
CAINE



# LEASE

## OFFICE SPACE | PETTIGRU HISTORIC DISTRICT

200 Whitsett St., Suite C Greenville, SC 29601



---

**T. Cox**  
864 250 4043



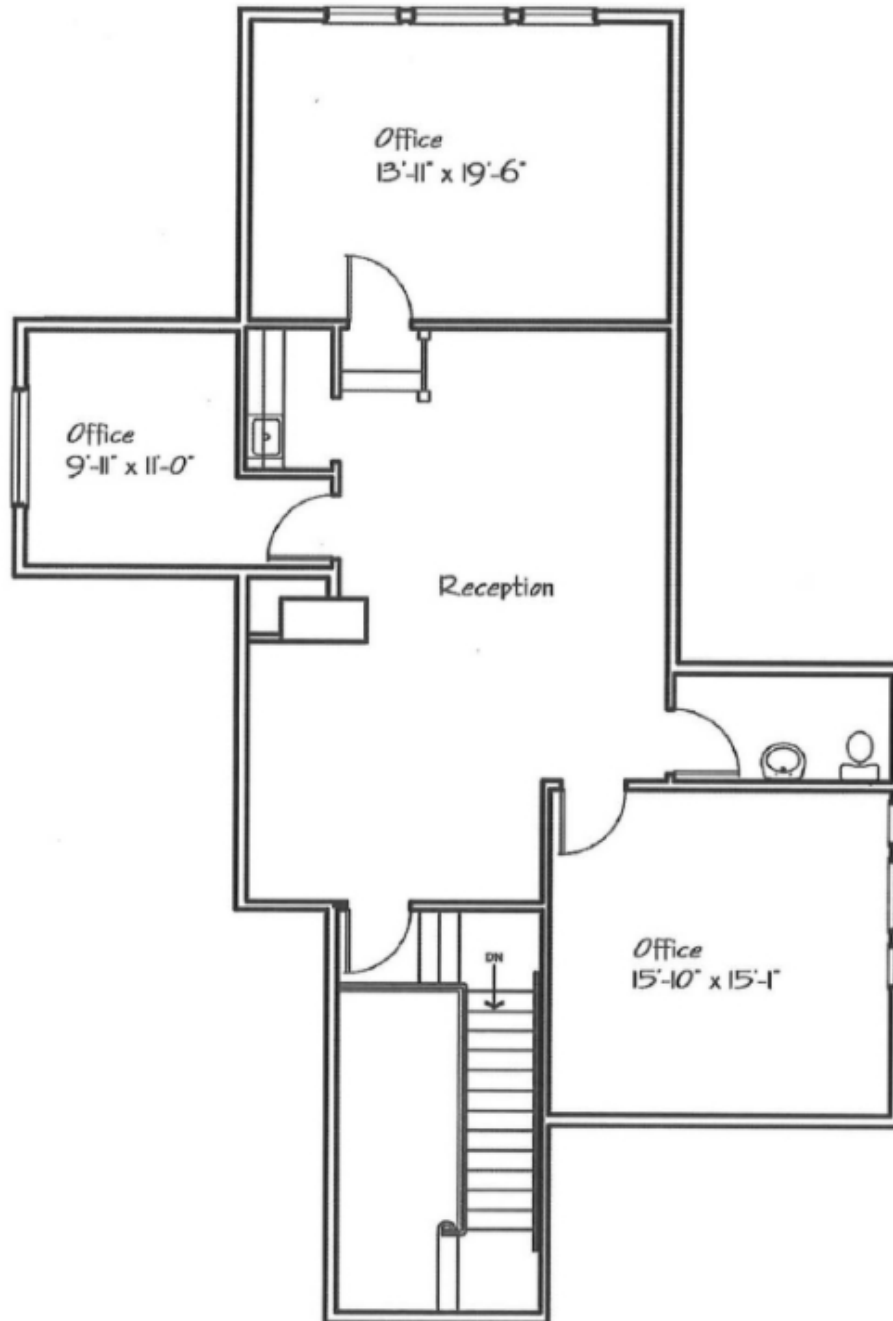
**COLDWELL BANKER**  
**COMMERCIAL**  
CAINE

# LEASE

## OFFICE SPACE | PETTIGRU HISTORIC DISTRICT

200 Whitsett St., Suite C Greenville, SC 29601

### FLOOR PLAN- SECOND FLOOR



**T. Cox**  
864 250 4043



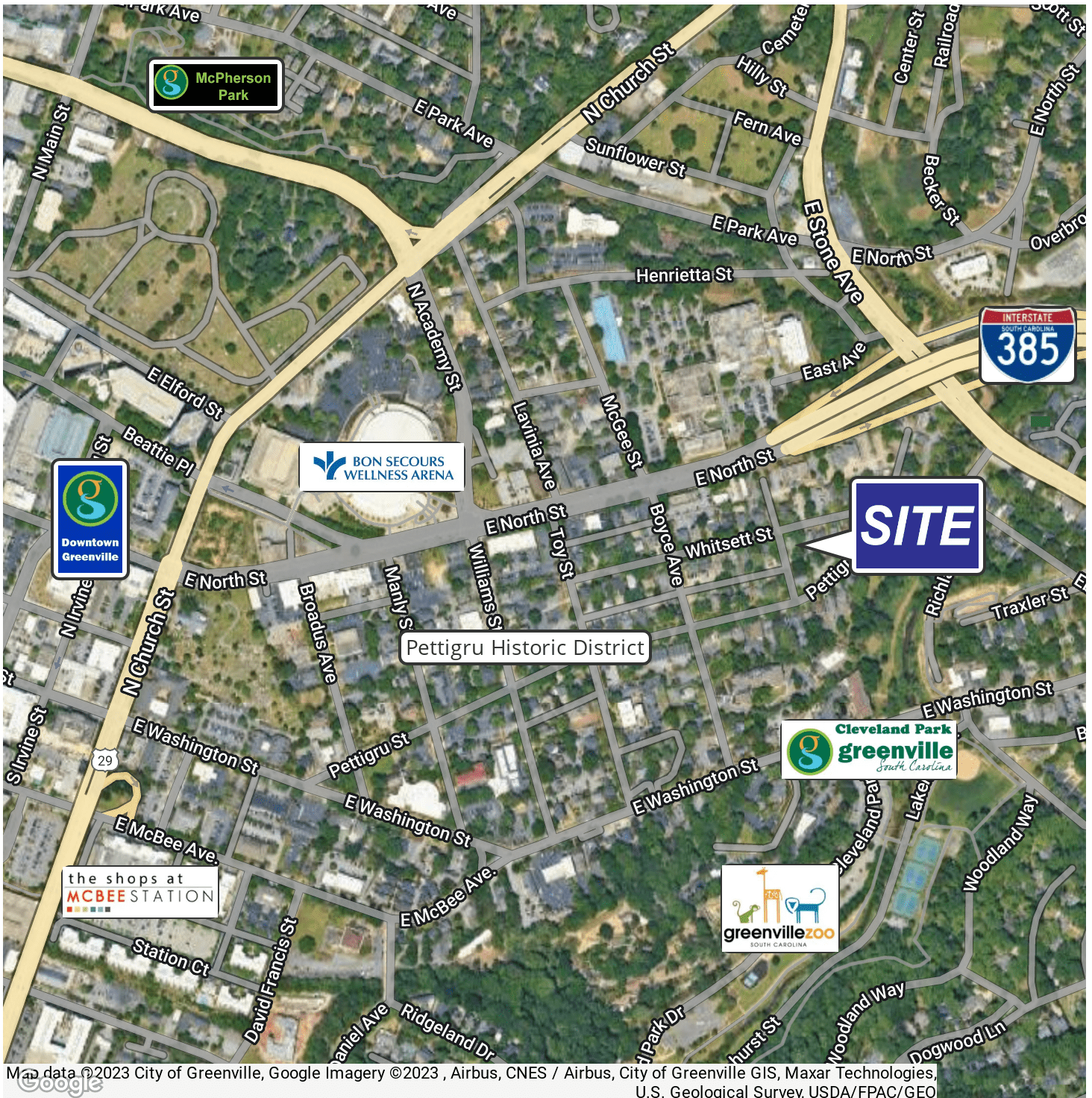
**COLDWELL BANKER  
COMMERCIAL**  
CAINE



# LEASE

## OFFICE SPACE | PETTIGRU HISTORIC DISTRICT

200 Whitsett St., Suite C Greenville, SC 29601



T. Cox  
864 250 4043



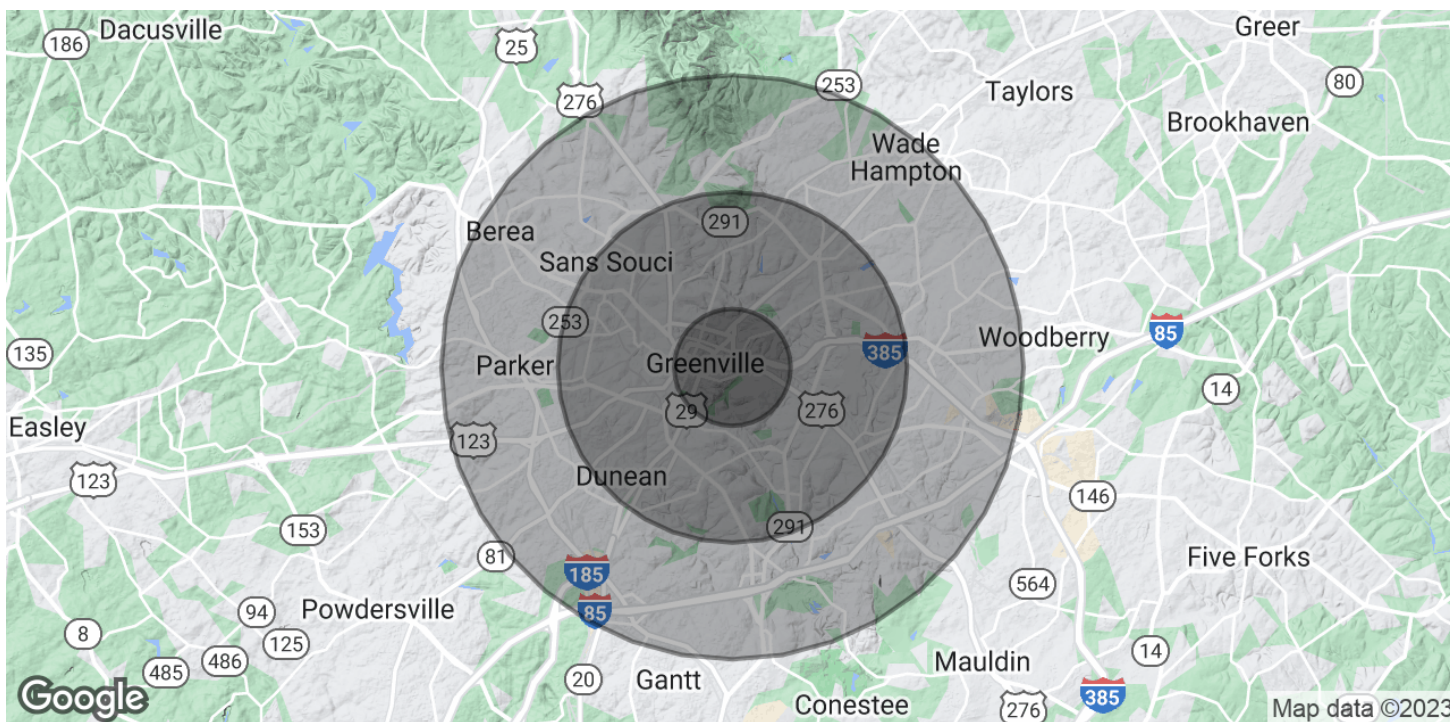
COLDWELL BANKER  
**COMMERCIAL**  
CAINE



# LEASE

## OFFICE SPACE | PETTIGRU HISTORIC DISTRICT

200 Whitsett St., Suite C Greenville, SC 29601



### POPULATION

	1 MILE	3 MILES	5 MILES
Total Population	8,720	68,598	152,221
Average Age	39.7	36.1	36.4
Average Age (Male)	38.5	35	34.8
Average Age (Female)	40.8	37.4	37.9

### HOUSEHOLDS & INCOME

	1 MILE	3 MILES	5 MILES
Total Households	3,695	29,133	64,073
# of Persons per HH	2.4	2.4	2.4
Average HH Income	\$68,321	\$59,217	\$56,222
Average House Value	\$190,044	\$201,107	\$208,993

\* Demographic data derived from 2020 ACS - US Census

**T. Cox**  
864 250 4043



**COLDWELL BANKER  
COMMERCIAL**  
CAINE