

LEASE

888 N HIGH ST

888 N High St Worthington, OH 43085

LOCATION DESCRIPTION

This property is located in a historic Old Worthington building. It just north of OH-161 / Dublin-Granville Road. The unit is in a bustling retail center with easy access to I-270, I-71, OH-315 and US-23 North.

PROPERTY HIGHLIGHTS

- Two offices 12.5 x13 and 11 x11 with storage room
- Kitchenette and bathroom
- Utilities are included in the rent, other than internet/office
- New luxury vinyl tiles and commercial carpet throughout
- Signage and exposure to High St with 18,664 average vehicle traffic count
- Lots of on-site parking spaces



OFFERING SUMMARY

Lease Rate:	\$1,400.00 per month (Full Service)
Available SF:	600 SF
Lot Size:	0.33 Acres
Building Size:	1,742 SF
Zoning:	C-3 Institutions and Offices
APN:	100-000372-00

OTHER RESOURCES

bit.ly/888nHighSt

Tom Velalis

614 354 6556

tvelalis@cbc-aspire.com



**COLDWELL BANKER
COMMERCIAL**

**ASPIRE
REALTY SERVICES**

LEASE

888 N HIGH ST

888 N High St Worthington, OH 43085



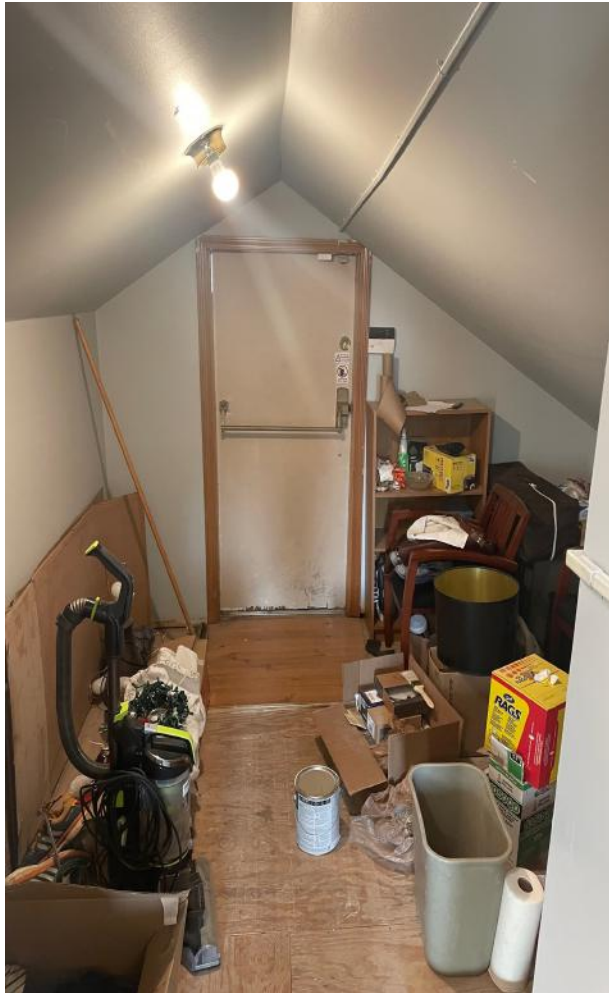
Tom Velalis
614 354 6556
tvelalis@cbc-aspire.com



LEASE

888 N HIGH ST

888 N High St Worthington, OH 43085



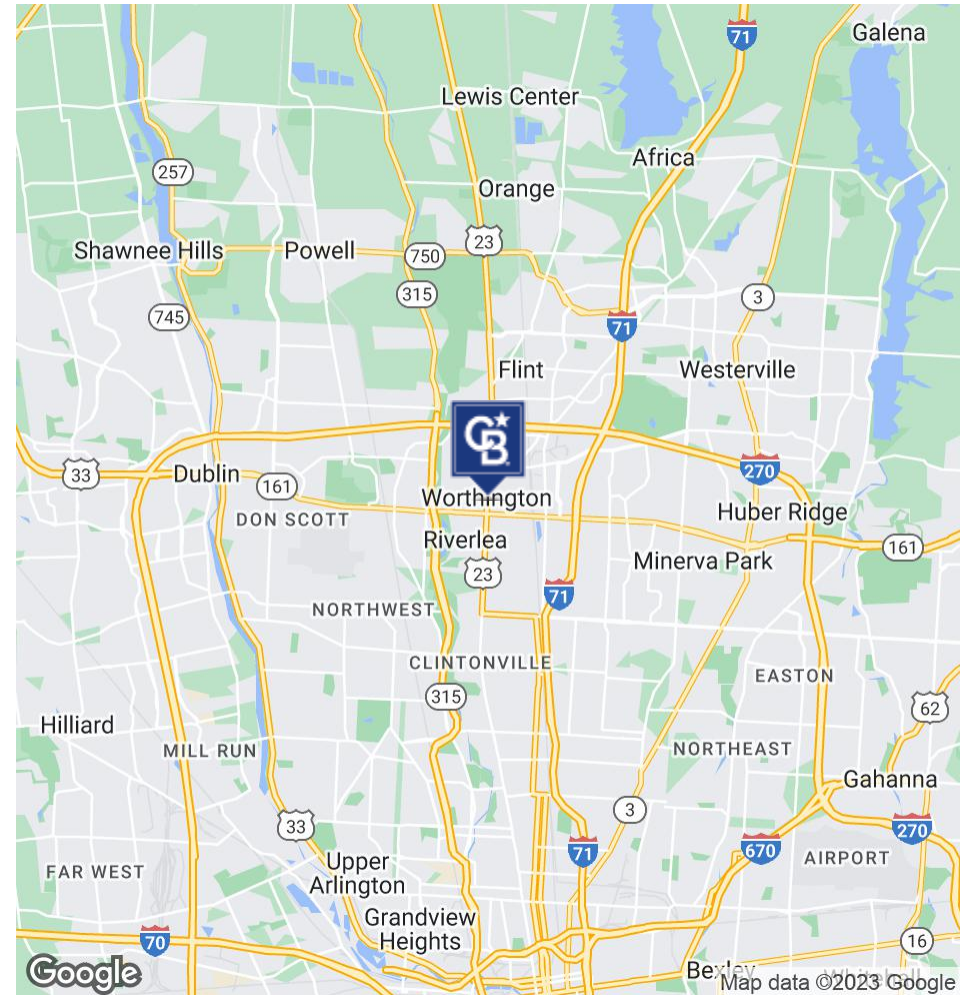
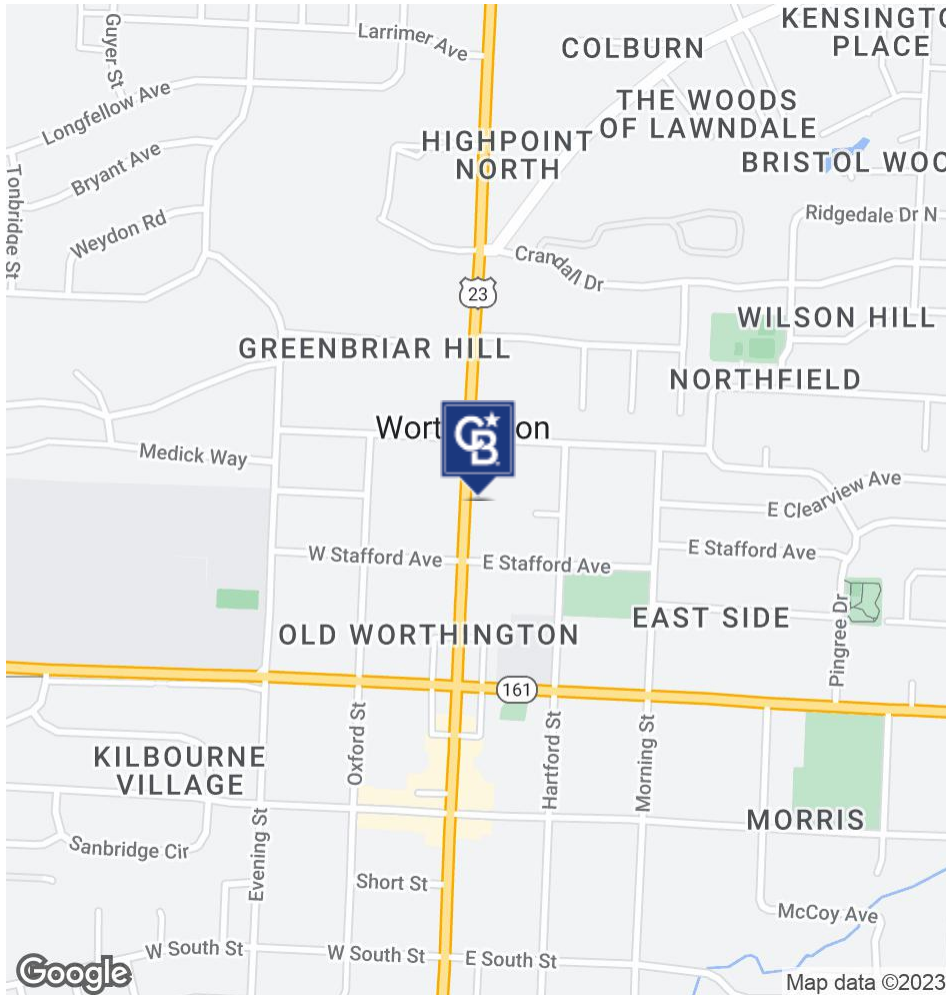
Tom Velalis
614 354 6556
tvelalis@cbc-aspire.com



LEASE

888 N HIGH ST

888 N High St Worthington, OH 43085



Tom Velalis
614 354 6556
tvelalis@cbc-aspire.com

COLDWELL BANKER
COMMERCIAL | **ASPIRE**
REALTY SERVICES

LEASE

888 N HIGH ST

888 N High St Worthington, OH 43085



Tom Velalis

614 354 6556

tvelalis@cbc-aspire.com



COLDWELL BANKER
COMMERCIAL

ASPIRE
REALTY SERVICES

LEASE

888 N HIGH ST

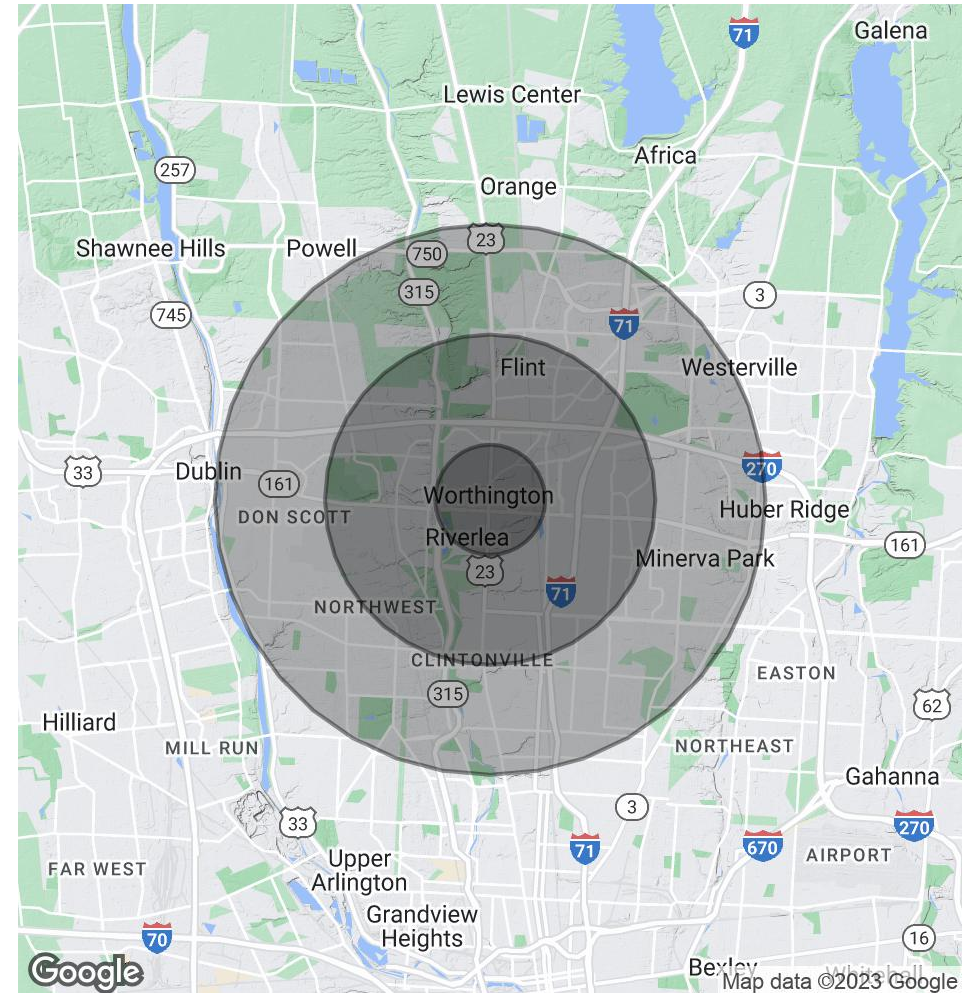
888 N High St Worthington, OH 43085

POPULATION	1 MILE	3 MILES	5 MILES
Total Population	10,342	110,889	312,072
Average Age	41.7	37.6	36.4
Average Age (Male)	40.9	36.8	35.6
Average Age (Female)	43.1	38.5	37.4

HOUSEHOLDS & INCOME	1 MILE	3 MILES	5 MILES
Total Households	4,215	48,511	134,661
# of Persons per HH	2.5	2.3	2.3
Average HH Income	\$127,838	\$84,367	\$83,062
Average House Value	\$313,435	\$198,143	\$197,310

** Demographic data derived from 2020 ACS - US Census*

TRAFFIC COUNTS	YEAR	DIRECTION	COUNT
High St N of West First Ave	2006	2-Way	15,581
High St N of Hubbard Ave	2015	2-Way	8,064
High St N of Prace Ave	2008	2-Way	16,563



Tom Velalis
614 354 6556
tvelalis@cbc-aspire.com

