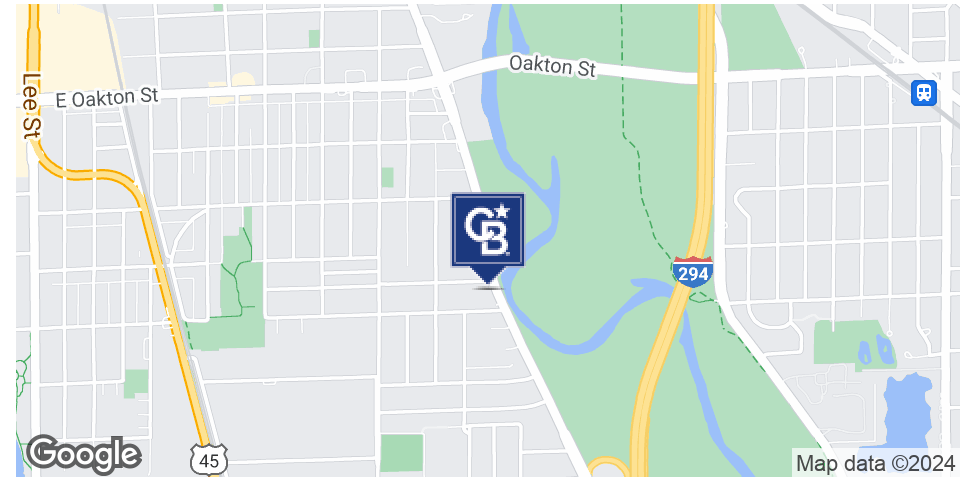


FOR LEASE

1982-1992 S RIVER ROAD

1926-1992 S River Road, Des Plaines, IL 60018



PROPERTY DESCRIPTION

Retail Space Available on River Road in Des Plaines! Two spaces available. End-cap is restaurant ready and offers 1,536± SF. Adjacent in-line space offers 1,457± SF. Spaces can be combined for 2,993± SF. Pylon signage on River Road and Surface parking. Co-tenants include Dunkin, Med-Spa, Sushi UA, and Beauty Salon. A great opportunity for a variety of businesses!!

PROPERTY HIGHLIGHTS

- End-Cap Space is Restaurant Ready
- Surface Parking
- Exposure off River Road, 23,210 VPD

OFFERING SUMMARY

Lease Rate:	\$12.00 SF/yr (NNN)
Available SF:	1,457 - 1,536 SF
Building Size:	10,005 SF

DEMOGRAPHICS

	1 MILE	3 MILES	5 MILES
Total Households	4,402	44,185	120,352
Total Population	12,093	115,459	313,170
Average HH Income	\$81,158	\$79,772	\$79,909

Mike Velasco

Sr. Commercial Executive

847 409 0232

mike.velasco@cbcnrt.com



COLDWELL BANKER
COMMERCIAL
REALTY

EXTERIOR

1982-1992 S RIVER ROAD

1926-1992 S River Road Des Plaines, IL 60018



Mike Velasco

Sr. Commercial Executive

847 409 0232

mike.velasco@cbcnrt.com

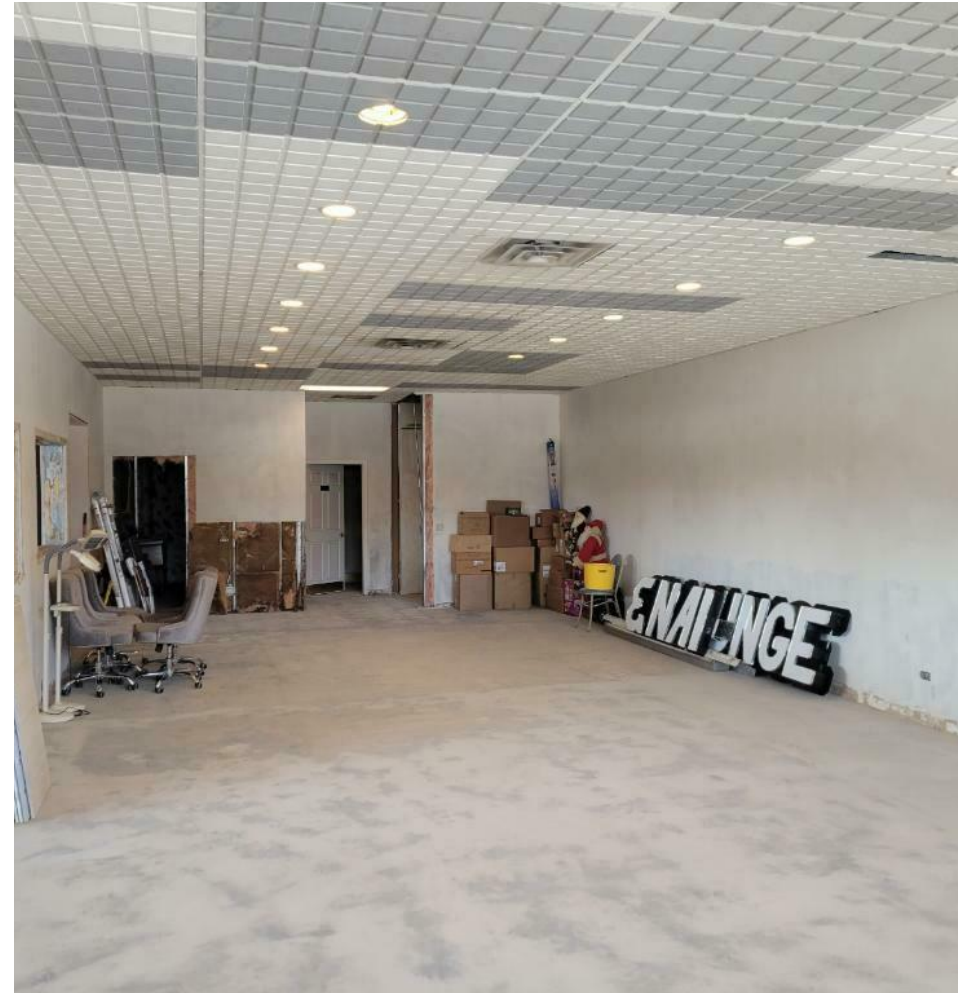
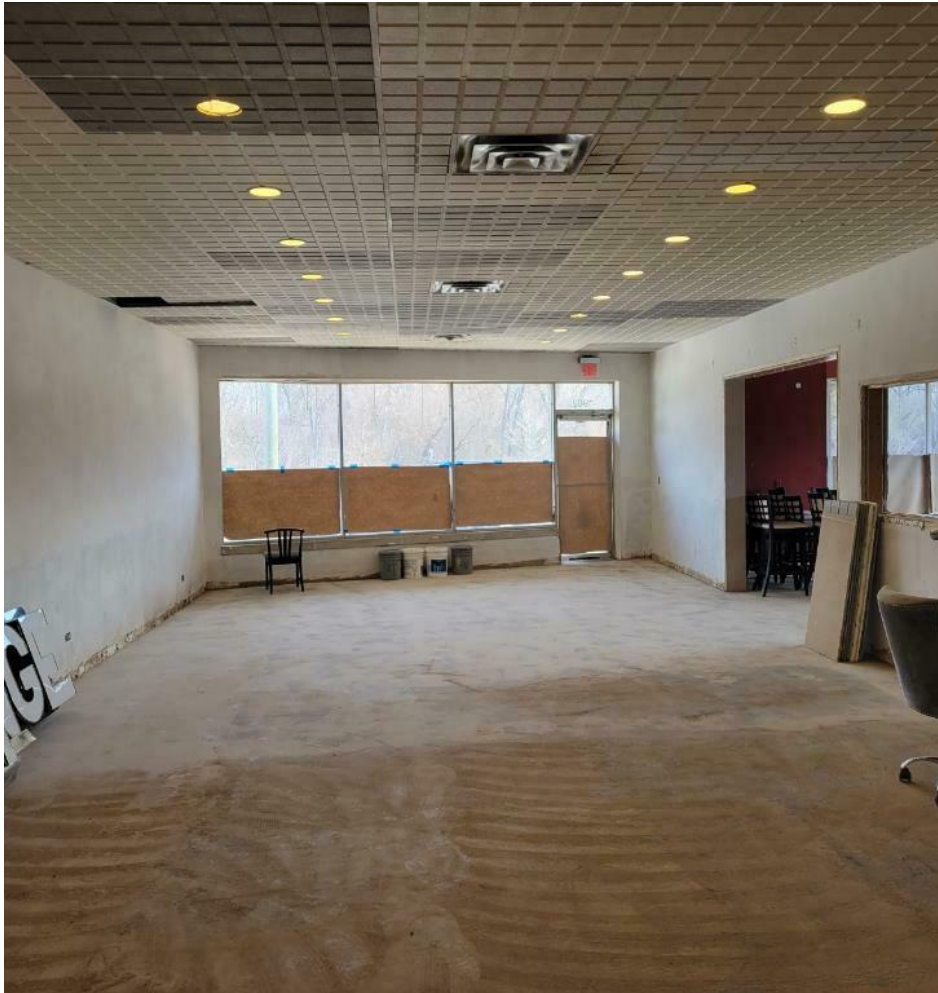


**COLDWELL BANKER
COMMERCIAL**
REALTY

UNIT 1982 (1,457± SF)

1982-1992 S RIVER ROAD

1926-1992 S River Road Des Plaines, IL 60018



Mike Velasco

Sr. Commercial Executive

847 409 0232

mike.velasco@cbcnrt.com



COLDWELL BANKER
COMMERCIAL
REALTY

UNIT 1992 (1,536± SF)

1982-1992 S RIVER ROAD

1926-1992 S River Road Des Plaines, IL 60018



Mike Velasco

Sr. Commercial Executive

847 409 0232

mike.velasco@cbsnrt.com



**COLDWELL BANKER
COMMERCIAL
REALTY**

LOCATION MAP

1982-1992 S RIVER ROAD

1926-1992 S River Road Des Plaines, IL 60018



Mike Velasco

Sr. Commercial Executive

847 409 0232

mike.velasco@cbcnrt.com



COLDWELL BANKER
COMMERCIAL
REALTY

