

SALE

PLAINFIELD BUSINESS CENTER

1630 Plainfield Ave Janesville, WI 53545



OFFERING SUMMARY

Sale Price:	\$1,475,000
Number of Units:	5
Lot Size:	0.88 Acres
Building Size:	11,200 SF
Zoning:	B-4
APN:	241 0218300144

DEMOGRAPHICS	1 MILE	3 MILES	5 MILES
Total Households	1,757	17,148	28,069
Total Population	3,817	38,017	64,360
Average HH Income	\$58,649	\$69,053	\$70,082

PROPERTY DESCRIPTION

Multitenant strip center available for sale in Janesville, WI. The pre-engineered steel building features ample parking, four (4) drive-in doors, and five (5) leased units. The business center is conveniently located less than one mile from Target, Shopko, and Blain's Farm & Fleet. Located in a retail/office park just off Milton Ave with easy access to I-90/39.

PROPERTY HIGHLIGHTS

- Lease income
- Business park setting
- 220' street frontage
- 40 parking stalls
- Easy access to Humes Rd & Milton Ave

Bill Mears, CCIM, SIOR
Managing Broker
O: 608 314 8251 | C: 608 359 3031
bill@mcguiremears.com

Adam Shultz
Broker
O: 608 314 8257 | C: 608 201 4794
adam@mcguiremears.com

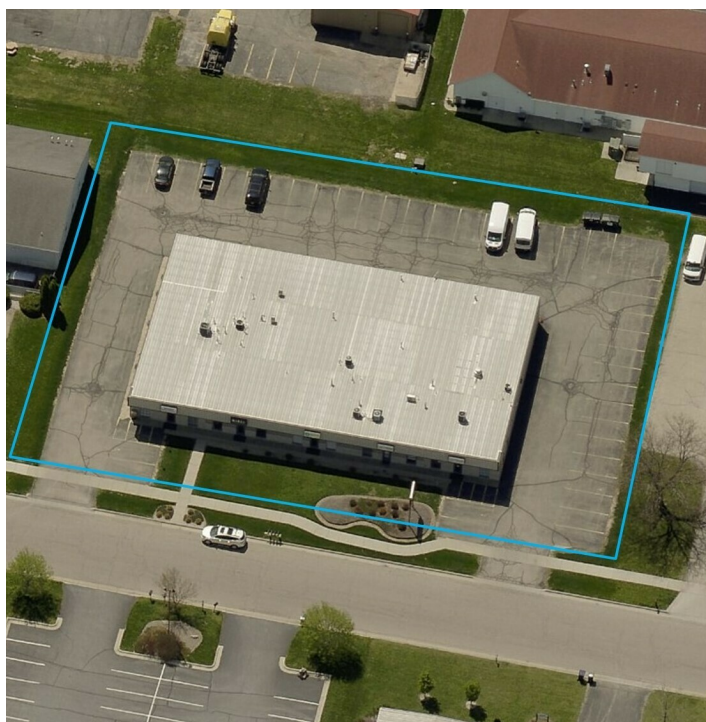


**COLDWELL BANKER
COMMERCIAL**
MCGUIRE MEARS
& ASSOCIATES

SALE

PLAINFIELD BUSINESS CENTER

1630 Plainfield Ave Janesville, WI 53545



Bill Mears, CCIM, SIOR
Managing Broker
O: 608 314 8251 | C: 608 359 3031
bill@mcguiremears.com

Adam Shultz
Broker
O: 608 314 8257 | C: 608 201 4794
adam@mcguiremears.com



**COLDWELL BANKER
COMMERCIAL**
MCGUIRE MEARS
& ASSOCIATES

SALE

PLAINFIELD BUSINESS CENTER

1630 Plainfield Ave Janesville, WI 53545



Bill Mears, CCIM, SIOR
Managing Broker
O: 608 314 8251 | C: 608 359 3031
bill@mcguiremears.com

Adam Shultz
Broker
O: 608 314 8257 | C: 608 201 4794
adam@mcguiremears.com



COLDWELL BANKER
COMMERCIAL
MCGUIRE MEARS
& ASSOCIATES

STATE OF WISCONSIN

BROKER DISCLOSURE TO NON-RESIDENTIAL CUSTOMERS

Wisconsin law requires all real estate licensees to give the following information about brokerage services to prospective customers.

Prior to negotiating on your behalf the brokerage firm, or an agent associated with the firm, must provide you the following disclosure statement:

BROKER DISCLOSURE TO CUSTOMERS

You are the customer of the brokerage firm (hereinafter Firm). The Firm is either an agent of another party in the transaction or a subagent of another firm that is the agent of another party in the transaction. A broker or a salesperson acting on the behalf of the Firm may provide brokerage services to you. Whenever the Firm is providing brokerage services to you, the Firm and its brokers and salespersons (hereinafter Agents) owe you, the customer, the following duties:

- The duty to provide brokerage services to you fairly and honestly.
- The duty to exercise reasonable skill and care in providing brokerage services to you.
- The duty to provide you with accurate information about market conditions within a reasonable time if you request it, unless disclosure of the information is prohibited by law.
- The duty to disclose to you in writing certain Material Adverse Facts about a property, unless disclosure of the information is prohibited by law (see "Definition of Material Adverse Facts" below).
- The duty to protect your confidentiality. Unless the law requires it, the Firm and its Agents will not disclose your confidential information or the confidential information of other parties (see "Confidentiality Notice to Customers" below).
- The duty to safeguard trust funds and other property held by the Firm or its Agents.
- The duty, when negotiating, to present contract proposals in an objective and unbiased manner and disclose the advantages and disadvantages of the proposals.

Please review this information carefully. An Agent of the Firm can answer your questions about brokerage services, but if you need legal advice, tax advice, or a professional home inspection, contact an attorney, tax advisor, or home inspector.

This disclosure is required by section 452.135 of the Wisconsin statutes and is for information only. It is a plain-language summary of a broker's duties to a customer under section 452.133(1) of the Wisconsin statutes.

CONFIDENTIALITY NOTICE TO CUSTOMERS

The Firm and its Agents will keep confidential any information given to the Firm and its Agents in confidence, or any information obtained by the Firm and its Agents that a reasonable person would want to be kept confidential, unless the information must be disclosed by law or you authorize the Firm to disclose particular information. The Firm and its Agents shall continue to keep the information confidential after the Firm is no longer providing brokerage services to you.

The following information is required to be disclosed by law.

1. Material Adverse Facts, as defined in Wis. Stat. § 452.01(5g) (see "Definition of Material Adverse Facts" below).
2. Any facts known by the Firm or its Agents that contradict any information included in a written inspection report

on the property or real estate that is the subject of the transaction.

To ensure that the Firm and its Agents are aware of what specific information you consider confidential, you may list that information below or provide that information to the Firm or its Agents by other means. At a later time, you may also provide the Firm or its Agents with other information you consider to be confidential.

CONFIDENTIAL INFORMATION: _____

NON-CONFIDENTIAL INFORMATION (The following information may be disclosed by the Firm and its Agents): _____

(Insert information you authorize to be disclosed, such as financial qualification information.)

DEFINITION OF MATERIAL ADVERSE FACTS

A "Material Adverse Fact" is defined in Wis. Stat. § 452.01(5g) as an Adverse Fact that a party indicates is of such significance, or that is generally recognized by a competent licensee as being of such significance to a reasonable party, that it affects or would affect the party's decision to enter into a contract or agreement concerning a transaction or affects or would affect the party's decision about the terms of such a contract or agreement.

An "Adverse Fact" is defined in Wis. Stat. § 452.01(1e) as a condition or occurrence that a competent licensee generally recognizes will significantly and adversely affect the value of the property, significantly reduce the structural integrity of improvements to real estate, or present a significant health risk to occupants of the property; or information that indicates that a party to a transaction is not able to or does not intend to meet his or her obligations under a contract or agreement made concerning the transaction.

NOTICE ABOUT SEX OFFENDER REGISTRY

You may obtain information about the sex offender registry and persons registered with the registry by contacting the Wisconsin Department of Corrections on the internet at <http://www.doc.wi.gov> or by telephone at 608-240-5830.

No representation is made as to the legal validity of any provision or the adequacy of any provision on any specific transaction.



**COLDWELL BANKER
COMMERCIAL**
**MCGUIRE MEARS &
ASSOCIATES**