



**COLDWELL BANKER
COMMERCIAL**
READ & CO.

FOR LEASE

1149 VISTA PARK DR., FOREST, VA

2,600 Sq. Ft. ± Office



Property Overview

Sq. Ft. 1,500 Sq. Ft. Downstairs - Suite A
1,100 Sq. Ft. Upstairs - Suite A1

Features

- Five Offices
- Reception Area
- Two Restrooms
- Ample Parking
- Two Entrances
- Signage Available

Price Suite A (Downstairs) 1,500 Sq. Ft. = \$14.50 / sq. ft. / yr. with 3% annual increases
Suite A1 (Upstairs) 1,100 Sq. Ft. = \$12.50 / sq. ft. / yr. with 3% annual increases

Zoning PID

Ricky Read, CCIM
434-841-3659
ricky@realestatelynchburg.com

Luke Dykeman
434-944-3920
lukedykeman@realestatelynchburg.com

Forrest Booth
434-841-4110
Forrest@realestatelynchburg.com

Features

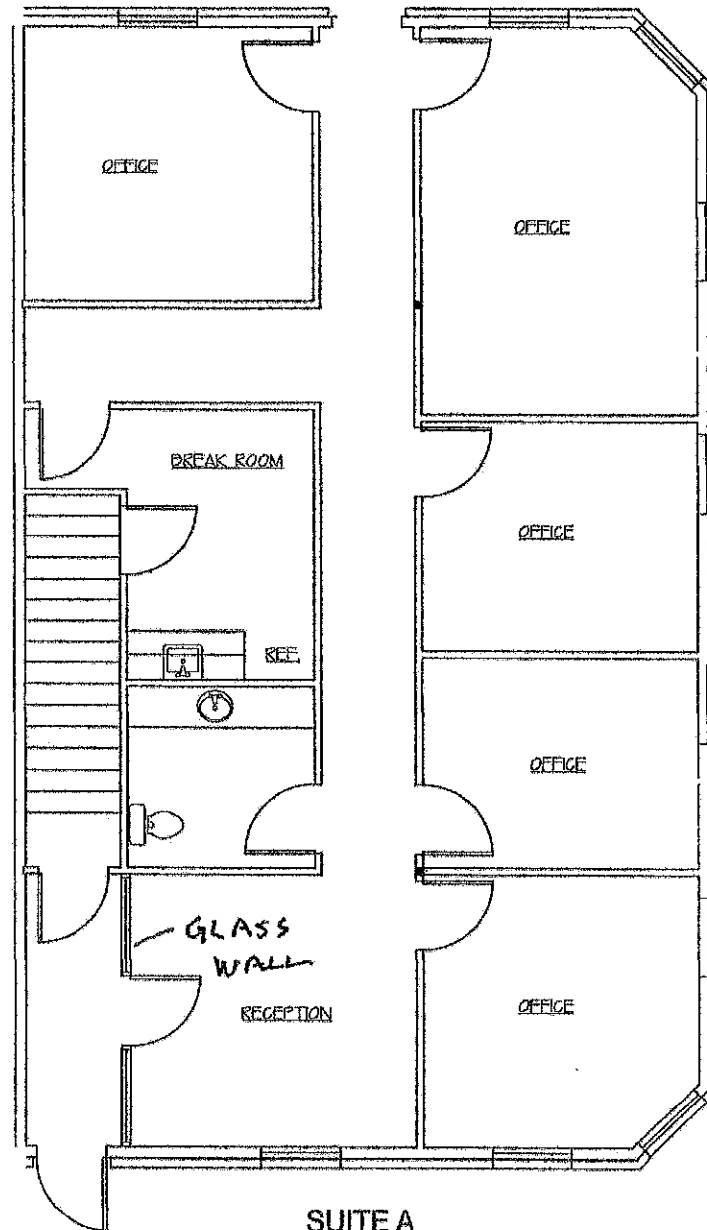
Attractive office space located in the Forest Professional Park, Forest, VA. This property features approximately 1,500 Sq. Ft. of office space in the downstairs and 1,100 Sq. Ft. in the upstairs. Property features include: Reception/seating area, five offices, and two restrooms. Suitable for a wide variety of uses.

**COLDWELL BANKER COMMERCIAL
READ & CO., REALTORS**
101 ANNJO COURT
FOREST, VA 24551
WWW.CBCREAD.COM

©2021 Coldwell Banker Real Estate LLC, dba Coldwell Banker Commercial Affiliates. All rights reserved. Coldwell Banker Commercial® and the Coldwell Banker Commercial are registered service marks owned by Coldwell Banker Real Estate LLC. Coldwell Banker Real Estate LLC, dba Coldwell Banker Commercial Affiliates fully supports the principles of the Fair Housing Act and the Equal Opportunity Act. Each office is independently owned and operated.

Coldwell Banker Commercial Read & Co., Realtors represent the Seller/Landlord of this property. Upon receipt of this information, Purchaser/Tenant acknowledges Coldwell Banker Commercial Read & Co., Realtors fiduciary responsibilities are to the Seller/Landlord.

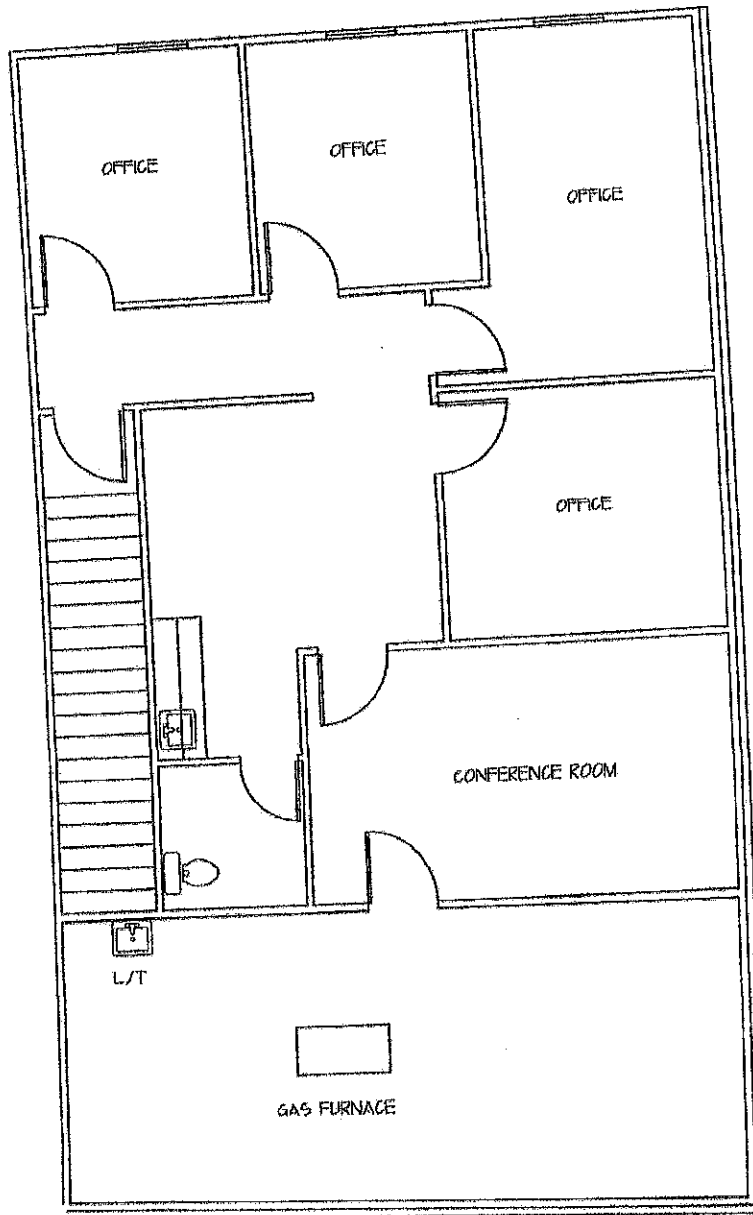
1149 VISTA PARK DR. SUITES A



SUITE A

EXHIBIT A

June 22, 2023



1149 VPD SUITE A 1,100 SQ. FT