

FOR LEASE

PIONEER INDUSTRIAL PARK

14111 Pioneer Way East Puyallup, WA 98372



OFFERING SUMMARY

Lease Rate:	Call for Rates
Availability:	June 1, 2024
Available SF:	6,157 SF
Year Built:	2005
Loading:	2 GL Doors (14x12)
Zoning:	Employment Center (EC)
Parcel Number:	7895000190

PROPERTY DESCRIPTION

This clear span space is currently used as a basketball academy and will be coming available June 1st, 2024. Layout consists of warehouse space, small office of approximately 350 square feet and a restroom.

PROPERTY HIGHLIGHTS

- HEAVY POWER
- POLISHED CONCRETE FLOOR
- SPRINKLERS
- NEW LED LIGHTING
- INSULATED

Vladimir Olyanich

425 615 0577

volyanich@cbcworldwide.com

Brandon Thomas

206 303 9595

bthomas@cbcworldwide.com

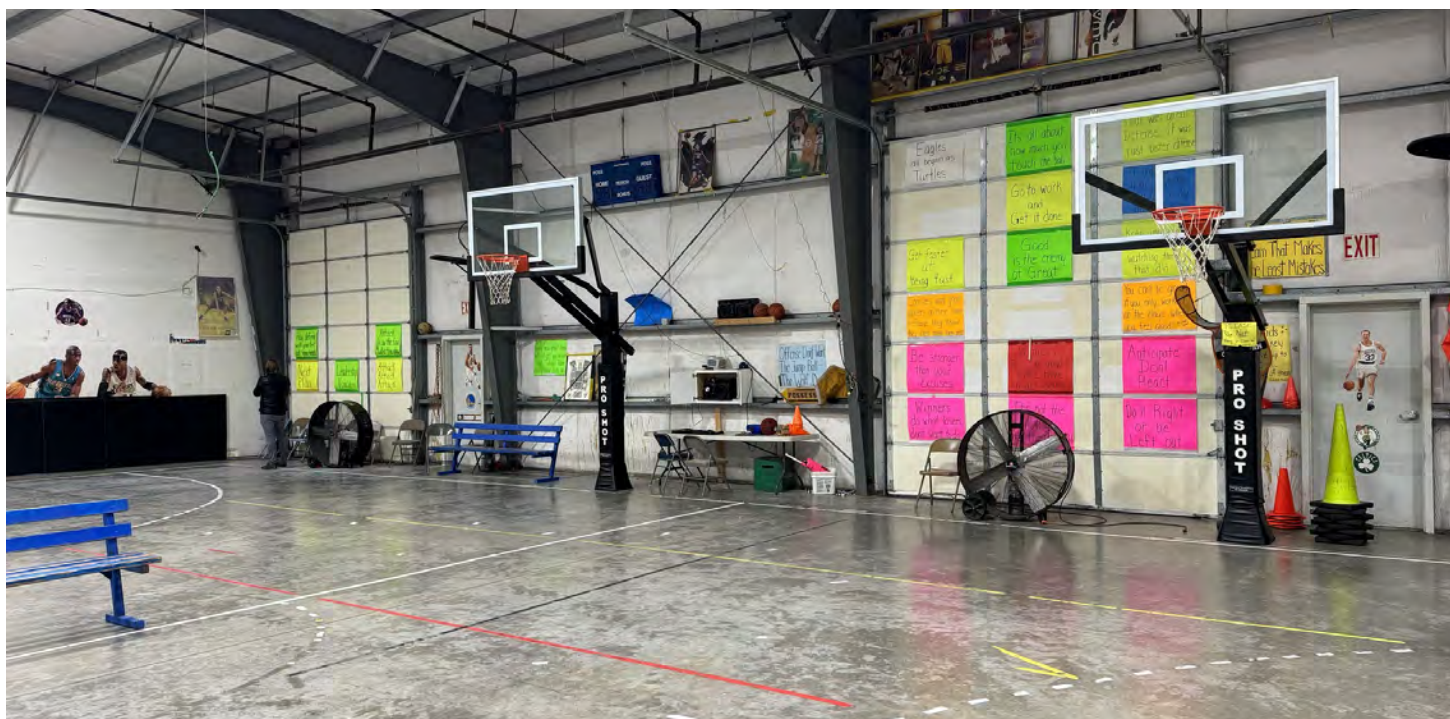
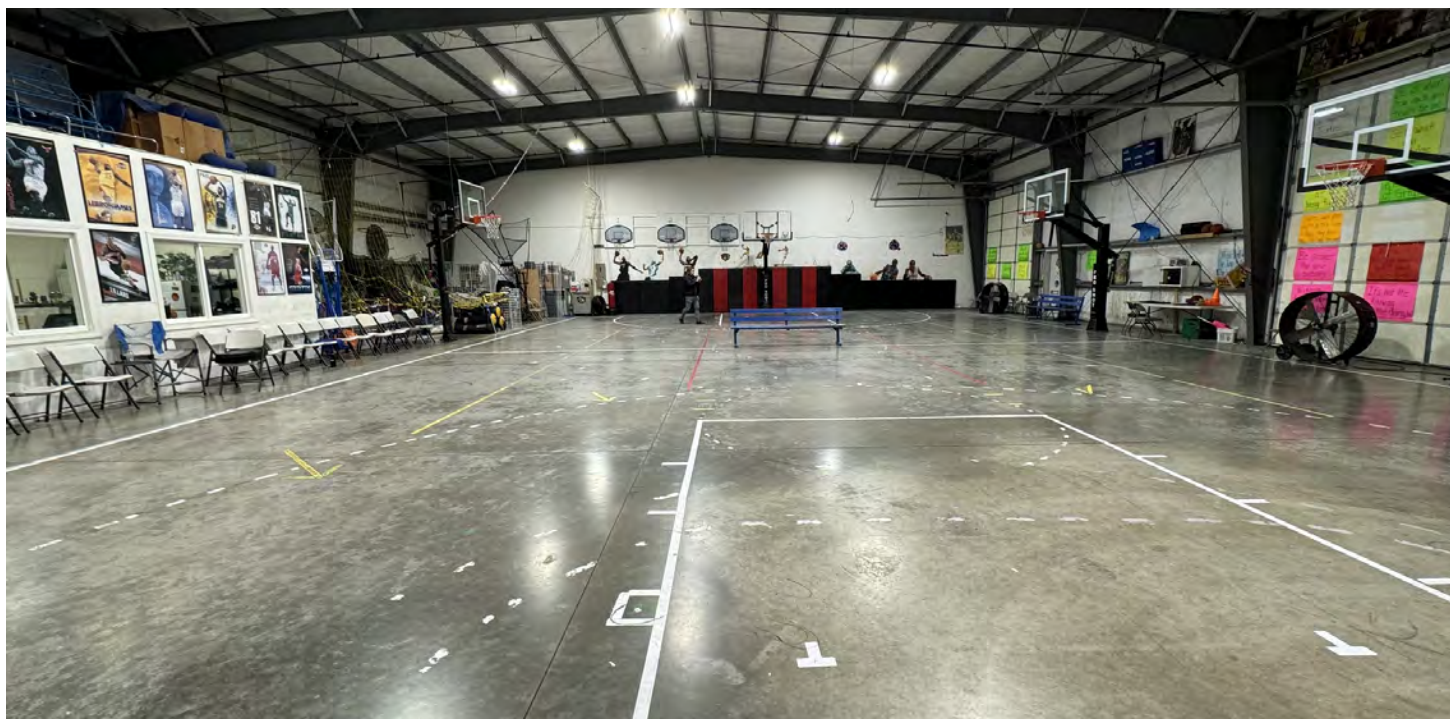


**COLDWELL BANKER
COMMERCIAL**
DANFORTH

FOR LEASE

PIONEER INDUSTRIAL PARK

14111 Pioneer Way East Puyallup, WA 98372



Vladimir Olyanich

425 615 0577

volyanich@cbcworldwide.com

Brandon Thomas

206 303 9595

bthomas@cbcworldwide.com

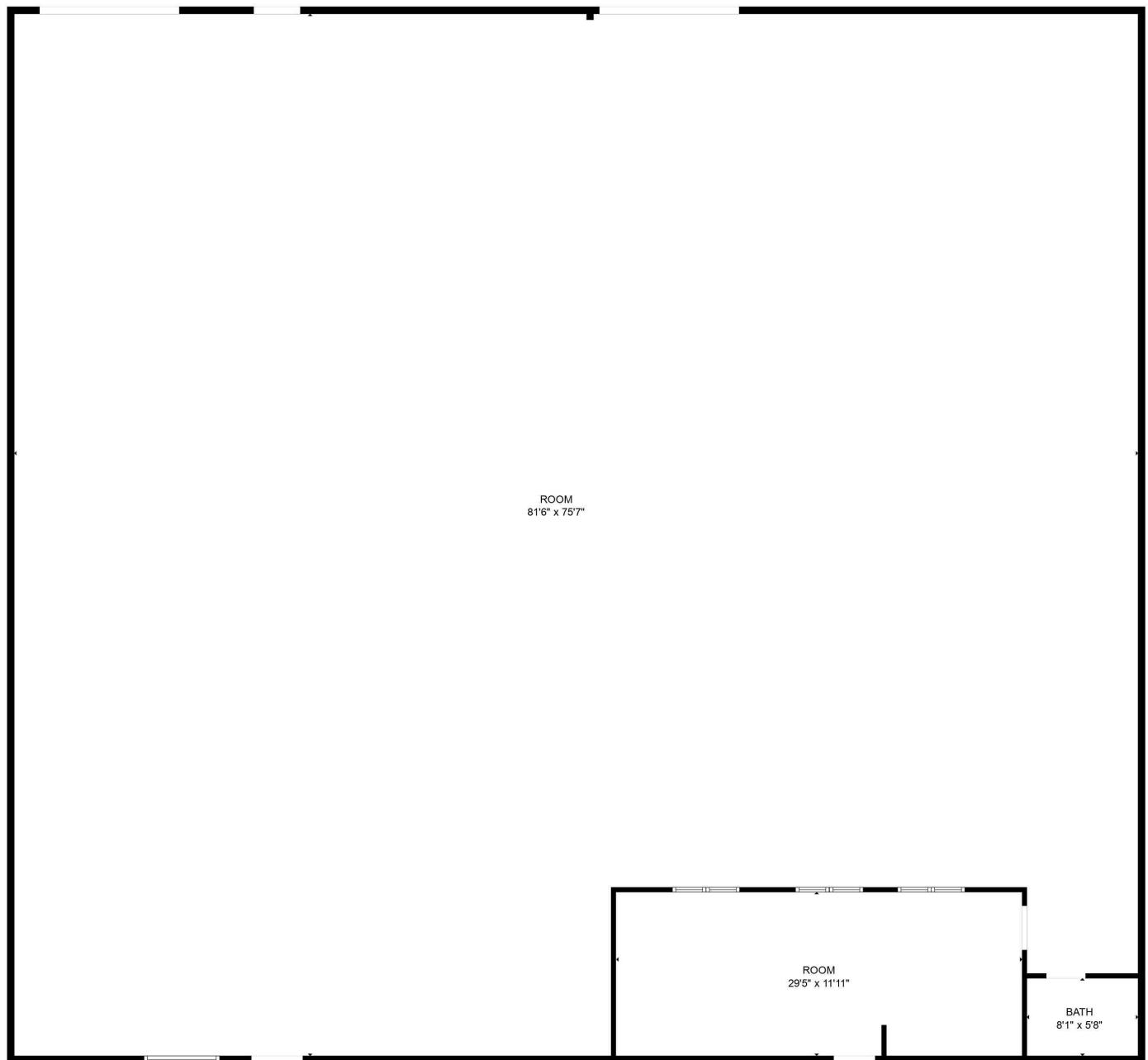


**COLDWELL BANKER
COMMERCIAL**
DANFORTH

FOR LEASE

PIONEER INDUSTRIAL PARK

14111 Pioneer Way East Puyallup, WA 98372



Vladimir Olyanich

425 615 0577

volyanich@cbcworldwide.com

Brandon Thomas

206 303 9595

bthomas@cbcworldwide.com

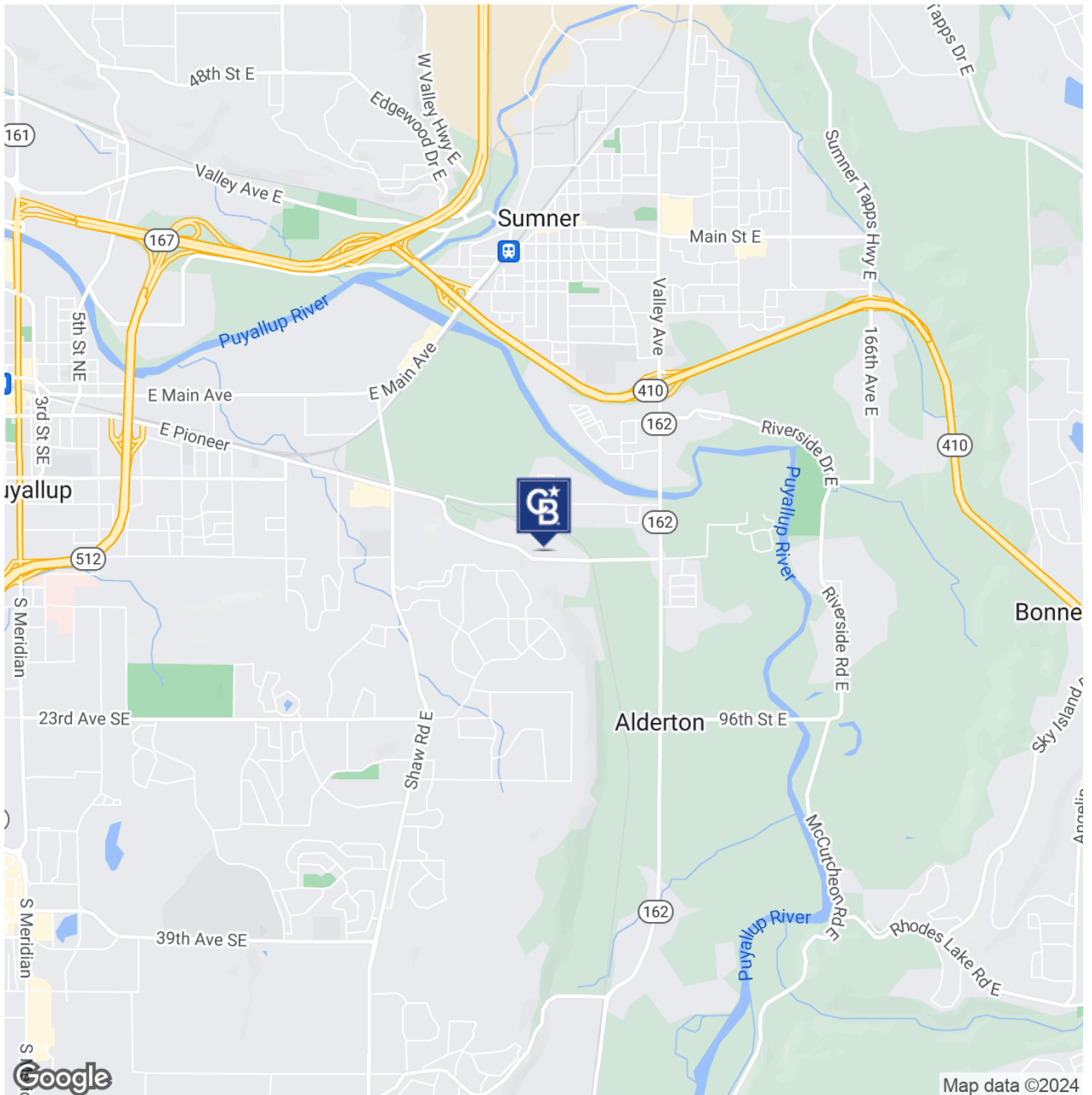


**COLDWELL BANKER
COMMERCIAL**
DANFORTH

FOR LEASE

PIONEER INDUSTRIAL PARK

14111 Pioneer Way East Puyallup, WA 98372



Vladimir Olyanich

425 615 0577

volyanich@cbcworldwide.com

Brandon Thomas

206 303 9595

bthomas@cbcworldwide.com



**COLDWELL BANKER
COMMERCIAL**
DANFORTH