



FOR LEASE

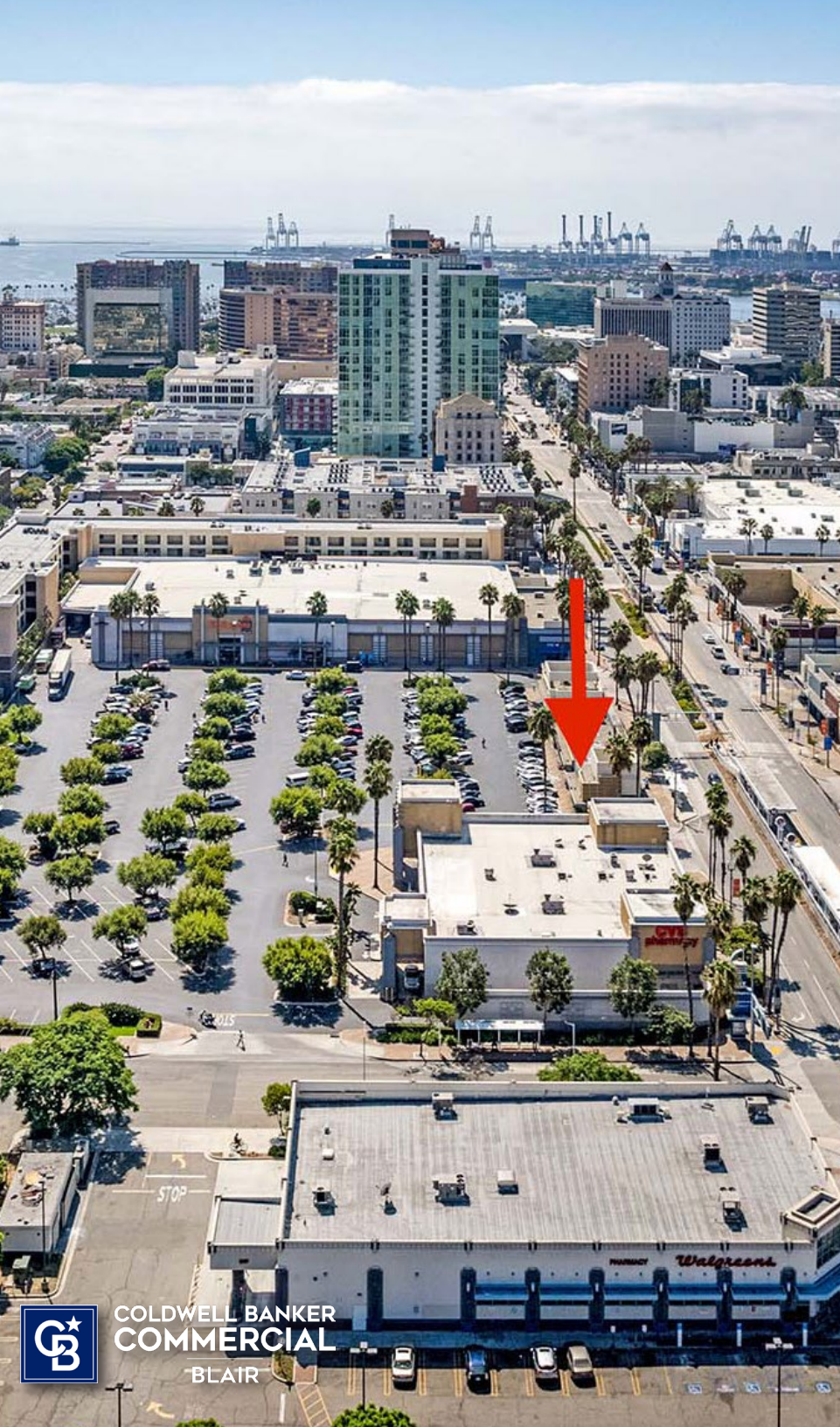


**COLDWELL BANKER
COMMERCIAL**
BLAIR

DOWNTOWN LONG BEACH RETAIL

590 LONG BEACH BOULEVARD • LONG BEACH, CA 90802





590 LONG BEACH BLVD.

LONG BEACH, CA 90802

PROPERTY DESCRIPTION

AVAILABLE RETAIL SPACE:	1,267 SF
BASE LEASE RATE:	\$4.00/SF - NNN + (\$1.40/SF)
ZONING:	LBPD30

HIGHLIGHTS

- End cap space
- Chance to enter rapidly developing downtown marketplace
- Diversified Neighborhood with High Density
- Great Area Vibe with High Visibility
- Street Front Exposure with highly visible signage opportunities
- Shopping center anchored by El Super, Starbucks, CVS, and Bank of the West

© 2023 Coldwell Banker Real Estate LLC, dba Coldwell Banker Commercial Affiliates. All Rights Reserved. Coldwell Banker Real Estate LLC, dba Coldwell Banker Commercial Affiliates fully supports the principles of the Equal Opportunity Act. Each Office is Independently Owned and Operated. Coldwell Banker Commercial and the Coldwell Banker Commercial Logo are registered service marks owned by Coldwell Banker Real Estate LLC, dba Coldwell Banker Commercial Affiliates.

As of 9.19.23



**COLDWELL BANKER
COMMERCIAL**

BLAIR

INTERIOR PHOTOS:

590 LONG BEACH BLVD.
LONG BEACH, CA 90802



590 LONG BEACH BLVD.

LONG BEACH, CA 90802

PROPERTY DESCRIPTION

Coldwell Banker Commercial BLAIR is pleased to present a rare retail opportunity in the heart of Downtown Long Beach with direct access and visibility on the lively Long Beach Blvd corridor facing the Metro Train Line. With approximately 1,267 SF available for Lease, the space includes street level exposure, in a 13,600 freestanding retail center anchored by a busy El Super and is adjacent to a Starbucks that has occupied the center since 2004. Formerly occupied by Fantastic Sam's hair salon, the space also provides frontage along Long Beach Blvd, second generation retail hair salon space, in a shopping center anchored in El Super, Starbucks, CVS, and Bank of the West.

As a Pacific Rim city, Long Beach has many influences economically and culturally. Downtown continues to be the hub of tourism, business, and transit for the entire city. It is also home to a growing population of residents who want, within a livable urban core, convenient amenities, and services. Today, there are many facets that contribute to Downtown's unique sense of place: It has a social heart (Pine Avenue and the waterfront), a civic core (Civic Center, City Hall, the newly constructed Governor George Deukmejian Courthouse), and major attractions (Long Beach Convention Center, The Aquarium of the Pacific and major hotels, restaurants, and beaches). Current market conditions are continuing to improve and new developments in Long Beach have begun attracting new business, creative users, and visitors.

© 2023 Coldwell Banker Real Estate LLC, dba Coldwell Banker Commercial Affiliates. All Rights Reserved. Coldwell Banker Real Estate LLC, dba Coldwell Banker Commercial Affiliates fully supports the principles of the Equal Opportunity Act. Each Office is Independently Owned and Operated. Coldwell Banker Commercial and the Coldwell Banker Commercial Logo are registered service marks owned by Coldwell Banker Real Estate LLC, dba Coldwell Banker Commercial Affiliates.

As of 9.19.23





The Pike Outlet Marketplace



Long Beach Blvd Retail Corridor



6th Street

Anaheim Station
M

6th Street Station
M



City Place shopping Center



6th Street & Long Beach Blvd. Retail



COLDWELL BANKER
COMMERCIAL
BLAIR



590 LONG BEACH BLVD.

LONG BEACH, CA 90802



**COLDWELL BANKER
COMMERCIAL**
BLAIR

For more information contact:

SHEVA HOSSEINZADEH

Principal

Mobile: (562) 400-5949

Email: Sheva@cbcbclair.com

BRE# 01922147

VACHEL MCKEEVER

Associate Vice President

Mobile: (562) 900-2938

Email: VMcKeever@cbcbclair.com

BRE# 02074710