



SHEM CREEK

CHUCK DAWLEY BLVD

2.79
ACRES

FOR SALE

1110 Chuck Dawley Blvd
Mount Pleasant, SC



COLDWELL BANKER
COMMERCIAL
ATLANTIC

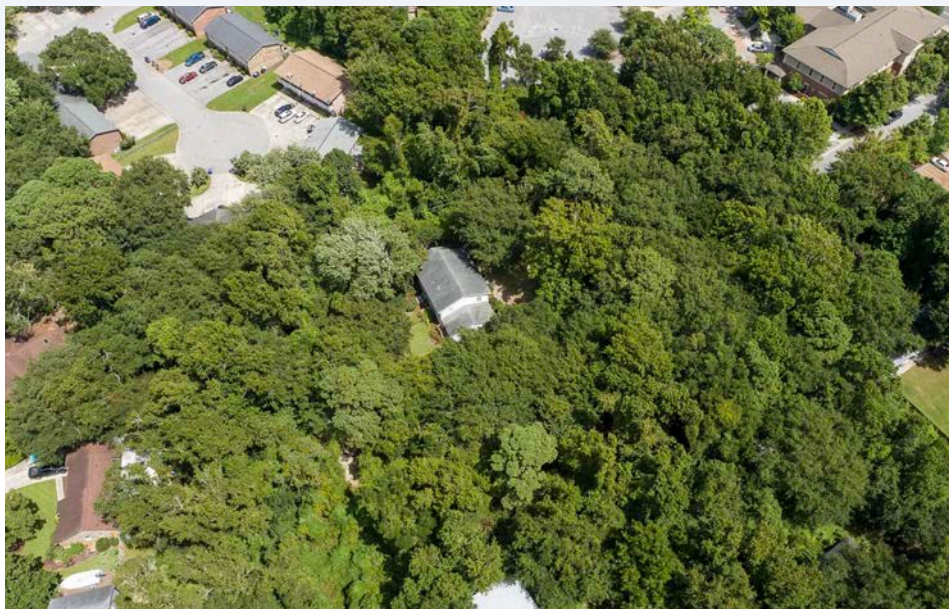
Brent Case, CCIM
(C) 843.270.4192
bcase@cbcatlantic.com



COLDWELL BANKER
REALTY

Brian Seitz
(C) 843.708.2308
brian.seitz@cbcarolinas.com

EXECUTIVE SUMMARY



OFFERING SUMMARY

Price:	\$3,300,000
Acres:	2.79 Acres
SF:	3,284 SF
Tax ID:	532-04-00-004
Zoning:	Charleston County Neighborhood Commercial in Mount Pleasant Overlay District
County:	Charleston

PROPERTY OVERVIEW

Hidden gem in the middle of Mount Pleasant! Unique opportunity for development or an exceptional piece of property to continue as a single-family residence. Quietly nestled on almost 3 acres, this 3200+ sf home was built in 1969 with a true Southern Farmhouse design. You'll feel miles away from town with grand oaks, azaleas, and camelias but just off Chuck Dawley Boulevard with easy access to Sullivans Island, Coleman Boulevard shopping/restaurants and Shem Creek. Property is currently in Charleston County with multiple options to develop as commercial/residential or to annex into the town. Very few development sites like this left in this part of Mount Pleasant!

POTENTIAL USES ARE

- Assisted Living Facility
- Mixed Use with Commercial and Residential
- Child or Adult Daycare
- Funeral Home
- Charter School
- Medical Office
- Office Park
- Food Truck Park
- Farmers Market Park

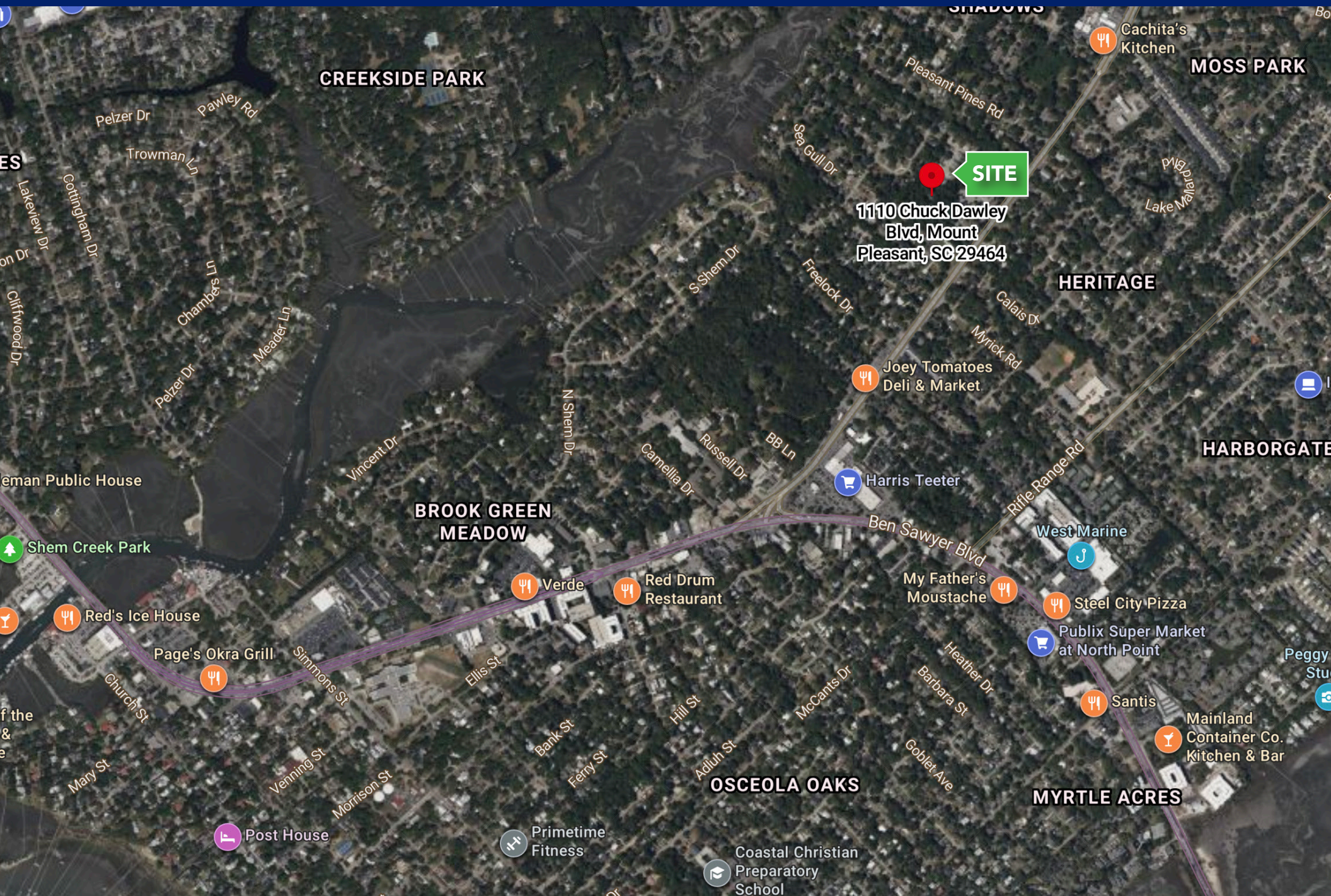
SHEM CREEK

CHUCK DAWLEY BLVD

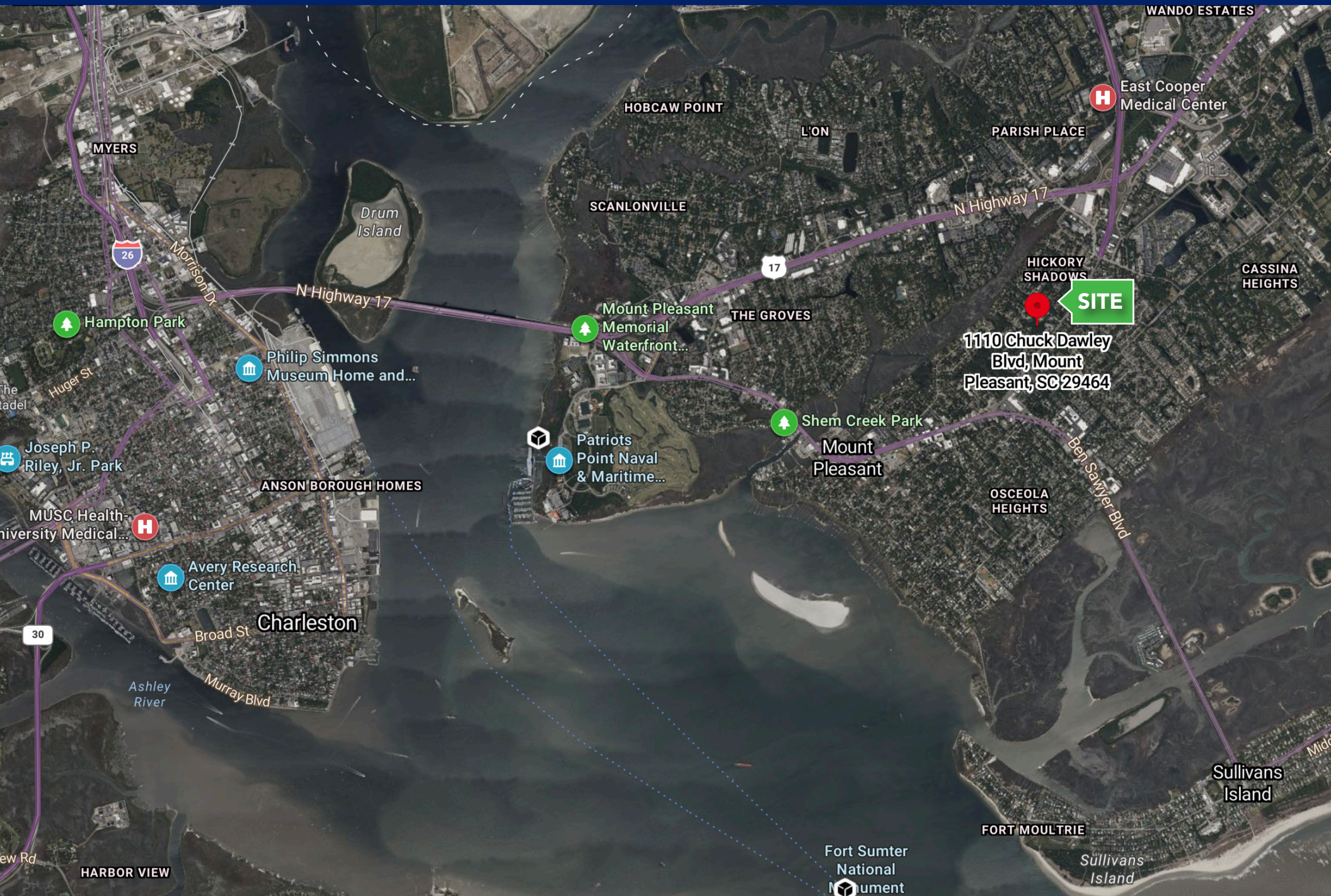
SITE



AREA RETAILERS



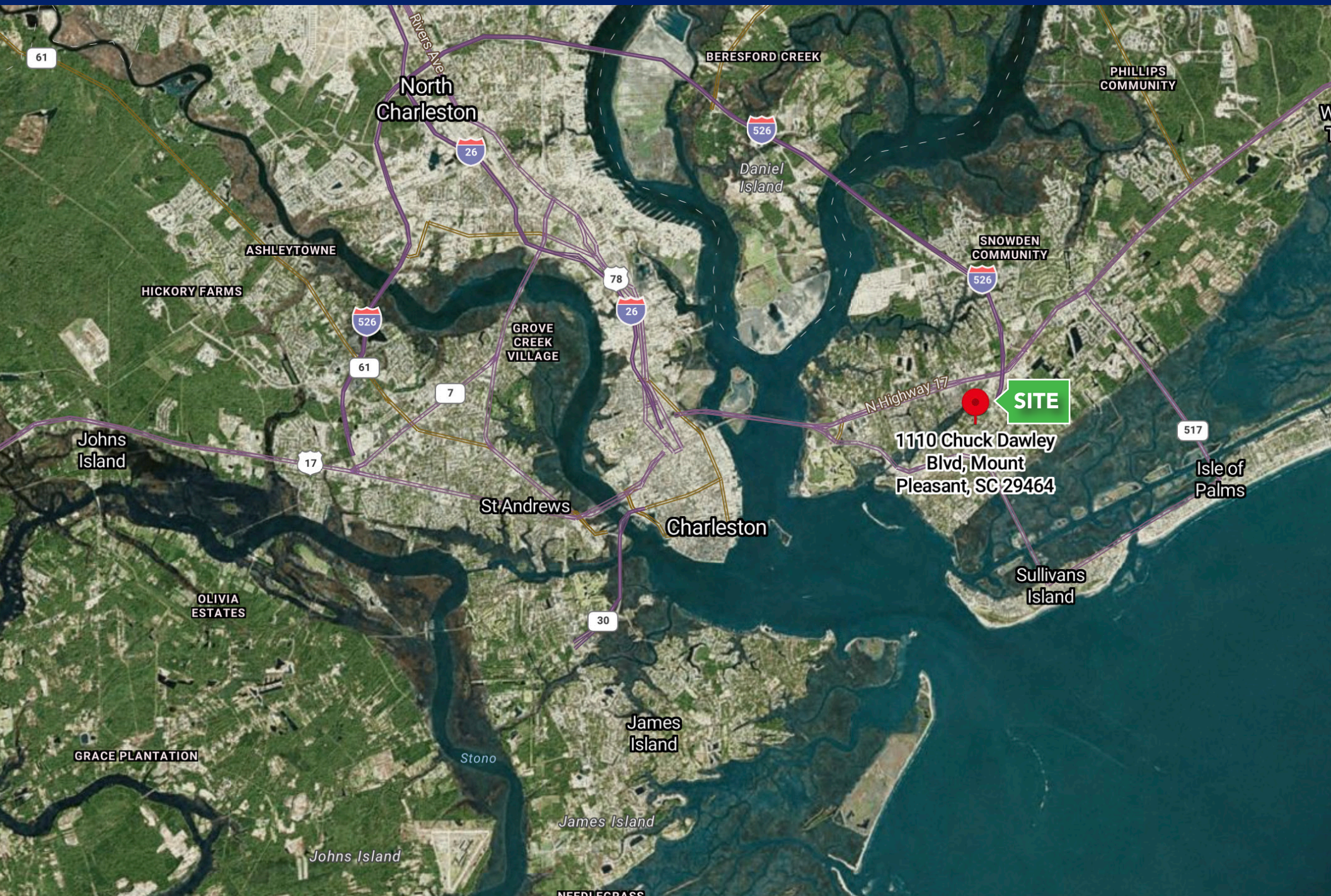
AREA MAP



1110 Chuck Dawley
Blvd, Mount
Pleasant, SC 29464

SITE

LOCATION MAP



1110 Chuck Dawley
Blvd, Mount
Pleasant, SC 29464

SITE



COLDWELL BANKER
COMMERCIAL
ATLANTIC



COLDWELL BANKER
REALTY

1110 Chuck Dawley Blvd | Mount Pleasant, SC

FOR SALE



Brent Case, CCIM
President/Broker in Charge
(C) 843.270.4192
bcase@cbcatlantic.com

Brian Seitz
Associate
(C) 843.708.2308
brian.seitz@cbcarolinas.com



COLDWELL BANKER
COMMERCIAL
ATLANTIC

3506 W Montague Ave Suite 200
North Charleston, SC 29418
843.744.9877
cbcatlantic.com | cbcretailatlantic.com



COLDWELL BANKER
REALTY

1127 Queensborough Blvd Ste 103
Mt Pleasant, SC 29464
843.856.8800
<https://brianseitz-carolinas.sites.cbmoxi.com/>

The information contained herein should be considered confidential and remains the sole property of Coldwell Banker Commercial Atlantic at all times. Although every effort has been made to ensure accuracy, no liability will be accepted for any errors or omissions. Disclosure of any information contained herein is prohibited except with the express written permission of Coldwell Banker Commercial Atlantic.