

FOR LEASE

2925 Meeting Street Road | North Charleston, SC



**COLDWELL BANKER
COMMERCIAL**
ATLANTIC



OFFERING SUMMARY

Lease Rate:	\$15 PSF
Total Available:	8,000 SF (Warehouse) 2,000 SF (Office)
Lease Type:	\$1.80 NNN
Tax ID:	469-15-00-085
County:	Charleston County
Zoning:	B-2 North Charleston

PROPERTY OVERVIEW

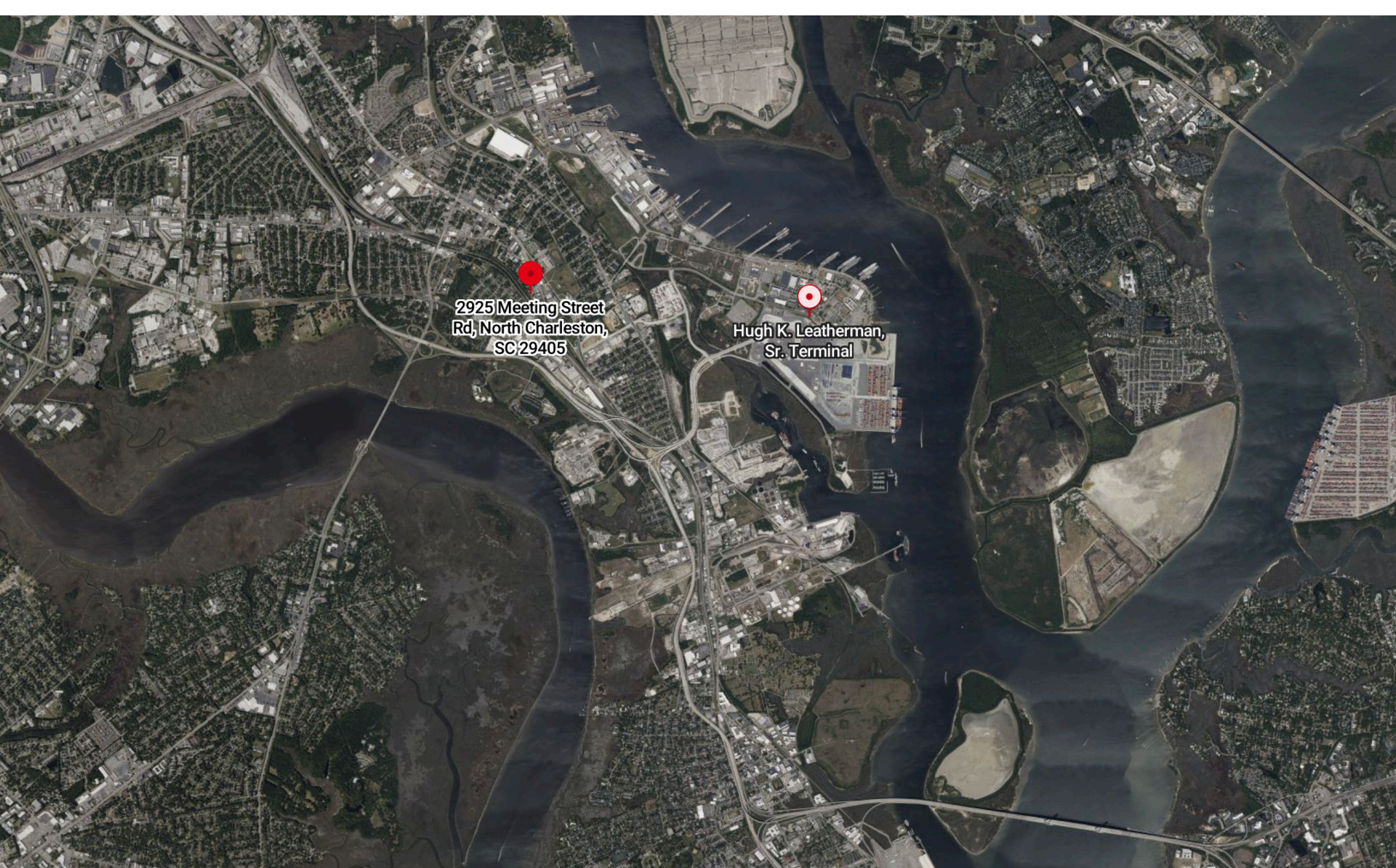
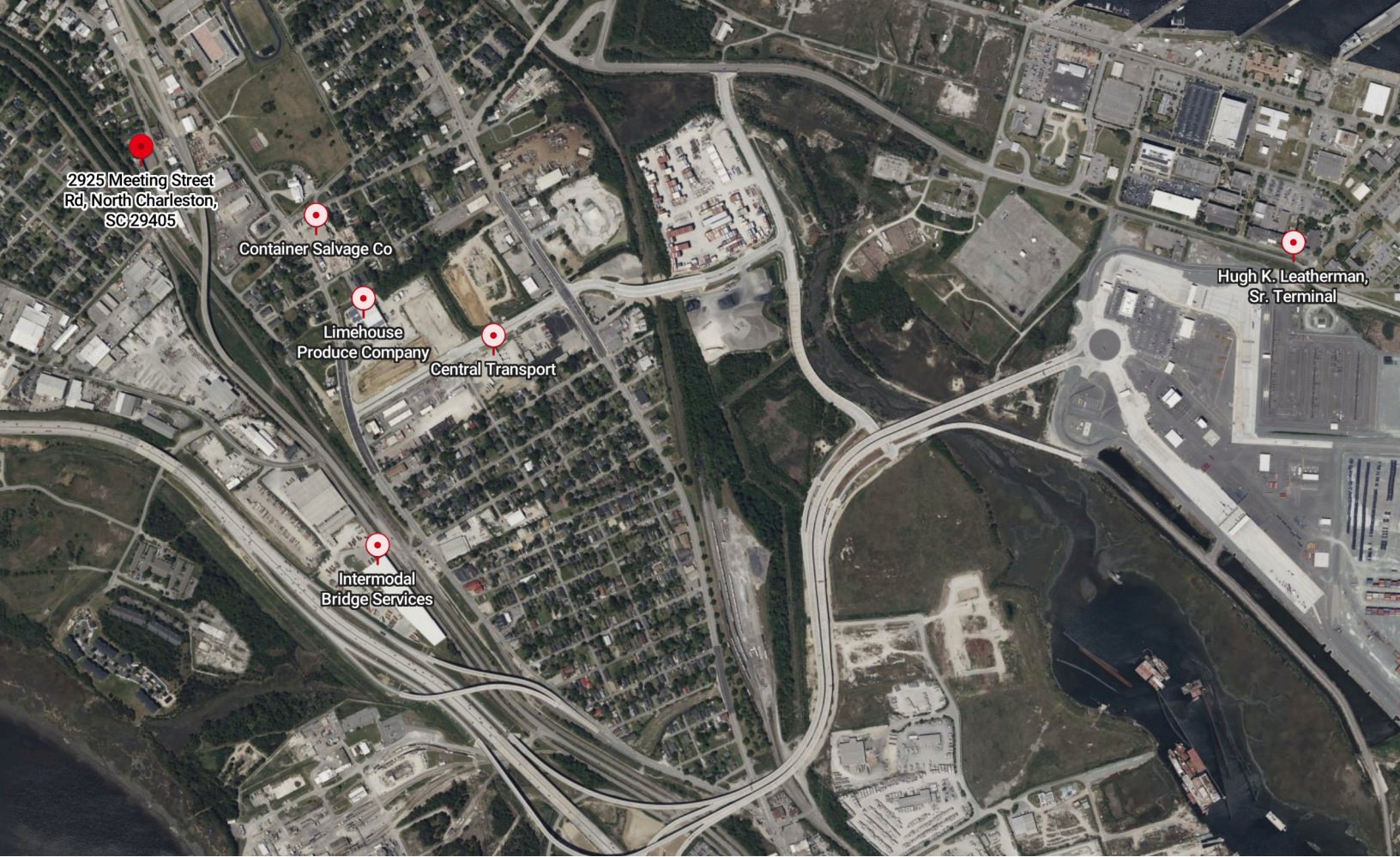
Tall solid building in “neck area” for distribution, storage, logistics, etc. Bonus loft area for storage, working crane system adjacent to drive in roll up door! Great mix of warehouse, office, park and lay down.



**COLDWELL BANKER
COMMERCIAL**
ATLANTIC

2925 Meeting Street Road | North Charleston, SC 29405

Ben Chase • Sara Bodell



COLDWELL BANKER
COMMERCIAL
ATLANTIC

2925 Meeting Street Road | North Charleston, SC 29405

Ben Chase • Sara Bodell

Demographics

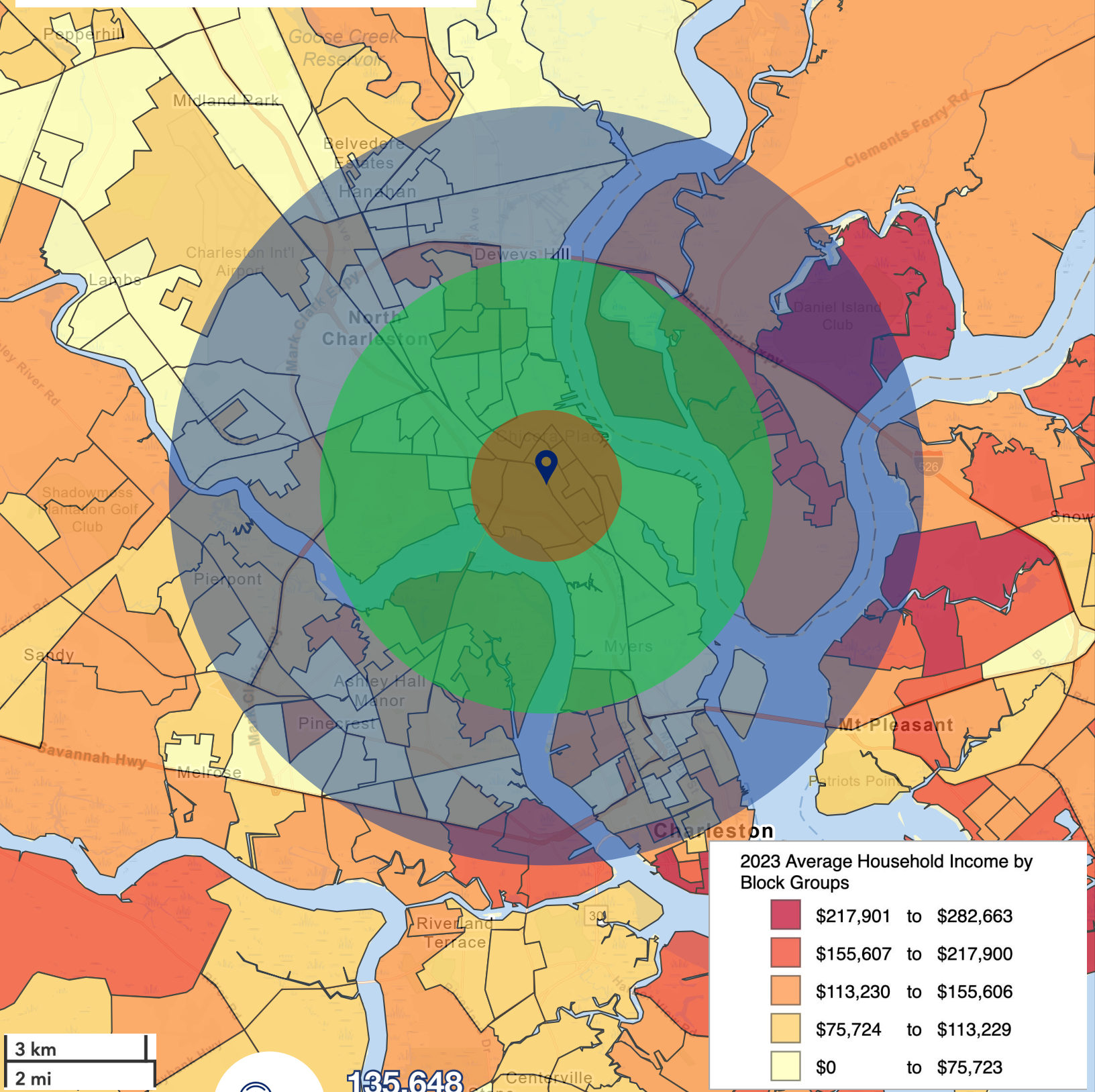
	1 Mile	3 Mile	5 Mile
Total Population:	6,226	34,258	135,648
Total Households:	2,427	14,430	59,550
Average HH Income:	\$45,308	\$84,687	\$94,744



8,532
Businesses
within 5 Miles



152,374
Employees
within 5 Miles



2023 Average Household Income by Block Groups

	\$217,901 to \$282,663
	\$155,607 to \$217,900
	\$113,230 to \$155,606
	\$75,724 to \$113,229
	\$0 to \$75,723

135,648

Population
within 5 Miles

All demographics based on Esri forecasts for 2023



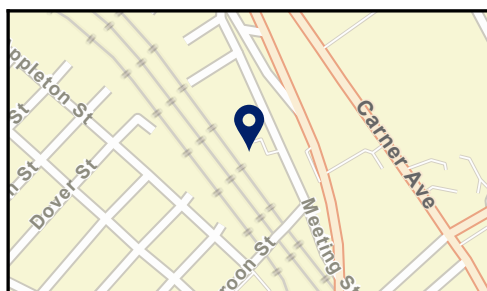
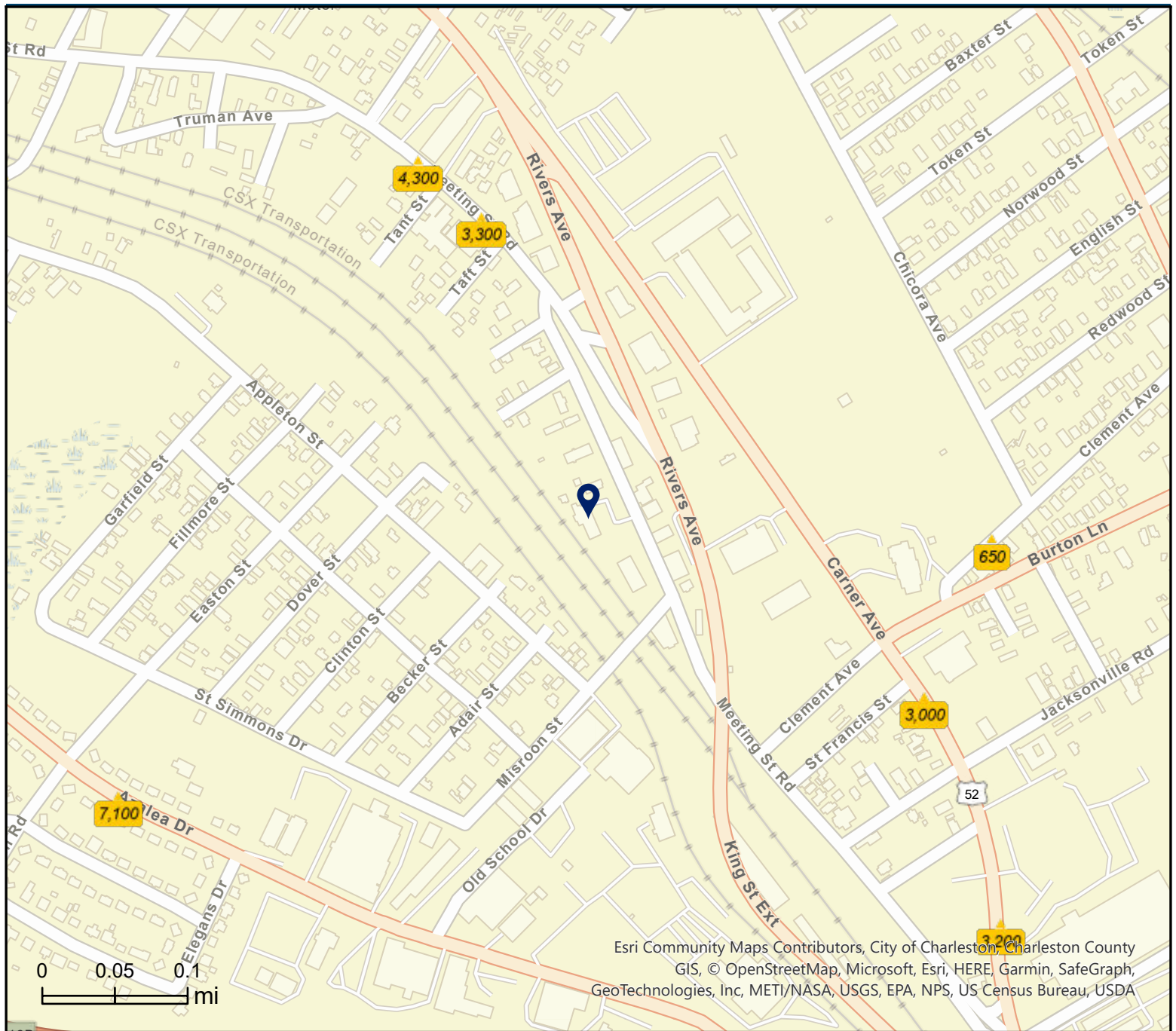
COLDWELL BANKER
COMMERCIAL
ATLANTIC

2925 Meeting Street Road | North Charleston, SC 29405

Ben Chase • Sara Bodell

2925 Meeting Street Rd, North Charleston, South Carolina,
Rings: 1, 3, 5 mile radii

Prepared by Esri
Latitude: 32.84764
Longitude: -79.96957



Average Daily Traffic Volume
▲ Up to 6,000 vehicles per day
▲ 6,001 - 15,000
▲ 15,001 - 30,000
▲ 30,001 - 50,000
▲ 50,001 - 100,000
▲ More than 100,000 per day



Source: ©2023 Kalibrate Technologies (Q2 2023).

August 07, 2023



COLDWELL BANKER
COMMERCIAL
ATLANTIC

2925 Meeting Street Road | North Charleston, SC 29405

Ben Chase • Sara Bodell



COLDWELL BANKER
COMMERCIAL
ATLANTIC

2925 Meeting Street Road | North Charleston, SC 29405

Ben Chase • Sara Bodell

Ben Chase

(C) 843.478.9594

bchase@cbsatlantic.com

Sara Bodell

(C) 864.903.2731

sbodell@cbsatlantic.com

3506 W Montague Ave Suite 200
North Charleston, SC 29418
843.744.9877
cbsatlantic.com | cbcretailatlantic.com



**COLDWELL BANKER
COMMERCIAL
ATLANTIC**

The information contained herein should be considered confidential and remains the sole property of Coldwell Banker Commercial Atlantic at all times. Although every effort has been made to ensure accuracy, no liability will be accepted for any errors or omissions. Disclosure of any information contained herein is prohibited except with the express written permission of Coldwell Banker Commercial Atlantic.